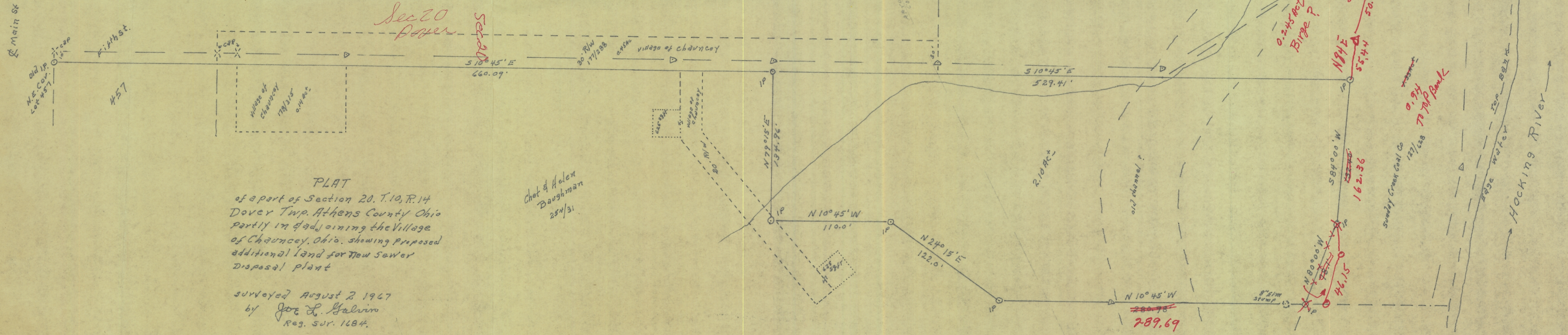


Dover 20  
 2.10 AC  
 1.25 AC SW



PLAT  
 of a part of Section 20, T. 10, R. 14  
 Dover Twp. Athens County Ohio  
 partly in adjoining the Village  
 of Chauncey, Ohio, showing proposed  
 additional land for New Sewer  
 Disposal plant

surveyed August 2 1967  
 by Joe L. Galvin  
 Reg. SUR. 1184.



Chet & Helen  
 Baughman  
 254/31

289.69

8" x 12" 30' x 40'

Sundry Creek Coal Co  
 127/628  
 70' top bank

50 min  
 Bridge Sewer

Sundry Creek Minerals

Hocking River

Scale 1" = 50'

N

Jacob's

Sewer M.H. M.H.

Village of Chauncey  
 177/288  
 1.25 AC

2.10 AC

old channel

100' bank

edge water

Sewer outlet

(Island)

Main St  
 Fifth St  
 #57  
 Old IP  
 NE Cor.  
 Lot #57

Village of Chauncey  
 177/288  
 0.11 AC

Sec 20  
 Dover

Sec 20

30' R/W 177/288  
 village of Chauncey

Village of Chauncey  
 177/288  
 0.11 AC

N 79° 15' E  
 134.9'

N 10° 45' W  
 110.0'

N 24° 15' E  
 122.0'

N 10° 45' W  
 289.69

N 80° 00' W  
 46.15

S 84° 00' W  
 162.36

N 89° E  
 55.44

S 52° 1/2 E  
 50.0

N 73° E  
 1.73 AC

N 35° E  
 1.32 AC

S 66° E  
 2.33 AC

N 86° E  
 3.24 AC

S 36° E  
 2.27 AC

N 66° E  
 2.33 AC

N 63° E  
 2.13 AC

N 110° E  
 3.05 AC

Small Run

48' lines

0.245 Acre  
 Bridge?

0.94  
 70' top bank

100' bank

edge water

100' bank

Hocking River

Sewer outlet

(Island)