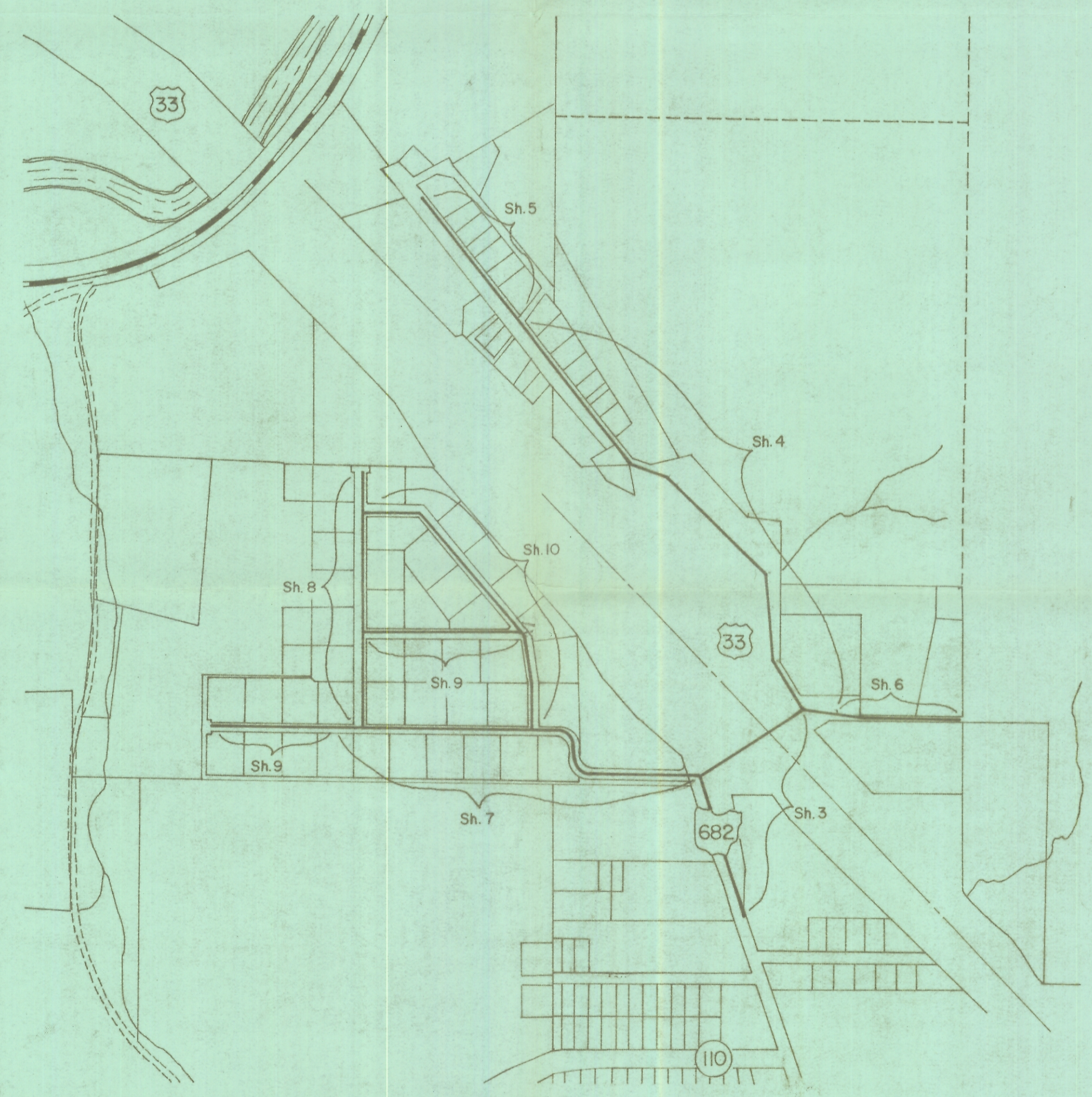


N

Schematic Plan



SUBSURFACE SOIL DATA:

It is the obligation of the bidder to make his own investigation of subsurface conditions prior to submitting his bid. Such soil tests and investigations shall be at the bidders expense, at no cost to the County or the Design Engineer.

Data concerning subsurface materials or conditions if any obtained by the County and the Design Engineer are for their own use in designing the project. Said borings, test excavations and other subsurface investigations, if any, are incomplete, are not a part of the contract documents, and are not warranted to show the actual subsurface conditions. Said subsurface data is available for review by bidders upon written request and execution of the Release for Subsurface Information. Bidders shall not rely on subsurface information obtained from the County and neither the County nor the Design Engineer will be responsible in any way for additional compensation for excavation work performed under the Contract due to the Contractor's assumption or deductions based on said subsurface data prepared solely for the County and the Design Engineer's use. The Contractor agrees that he will make no claims against the County or the Design Engineer, if, in carrying out the work, he finds that the actual subsurface conditions encountered do not conform to those indicated by said borings, test excavations and other subsurface investigations.

SYMBOL LEGEND

- \$ - SURVEY LINE
- g - GAS LINE
- x-x- FENCE
- ⊕ - TELEPHONE POLE
- ⊙ - POWER POLE
- ⊙ - W/ TREE
- ⊗ - SCRUB
- ⊙ - SIGN
- ⊙ - STUMP
- R - PROPERTY LINE
- GV - GAS VALVE
- R/W - RIGHT-OF-WAY
- CATV - CABLE TV LINE

*Dwg 25
SUB N*

SAFETY REQUIREMENTS AND PRECAUTIONS :

The Contractor and Sub-Contractor shall be solely responsible for all federal, state and local safety requirements, together with exercising precautions at all times for the protection of persons (including employees) and property.
It is also the sole responsibility of the Contractor and Sub-Contractor to initiate, maintain and supervise all safety requirements, precautions and programs in connection with the work.

NOTE: For any conflict between the Schematic and the Detailed Plans, the Detailed Plans shall govern.

EVANS, MECHWART, HAMBLETON & TILTON, INC. Consulting Engineers & Surveyors	JOB NO: AO-1100
Gahanna, Ohio Athens, Ohio	DATE: Oct. 1981
ATHENS COUNTY COMMISSIONERS THE PLAINS WATER DISTRICT WATER IMPROVEMENTS	SCALE: 1"=400' DRAWN BY: D.B.W.
CHECKED G.K.W.	APPROVED G.A.M.