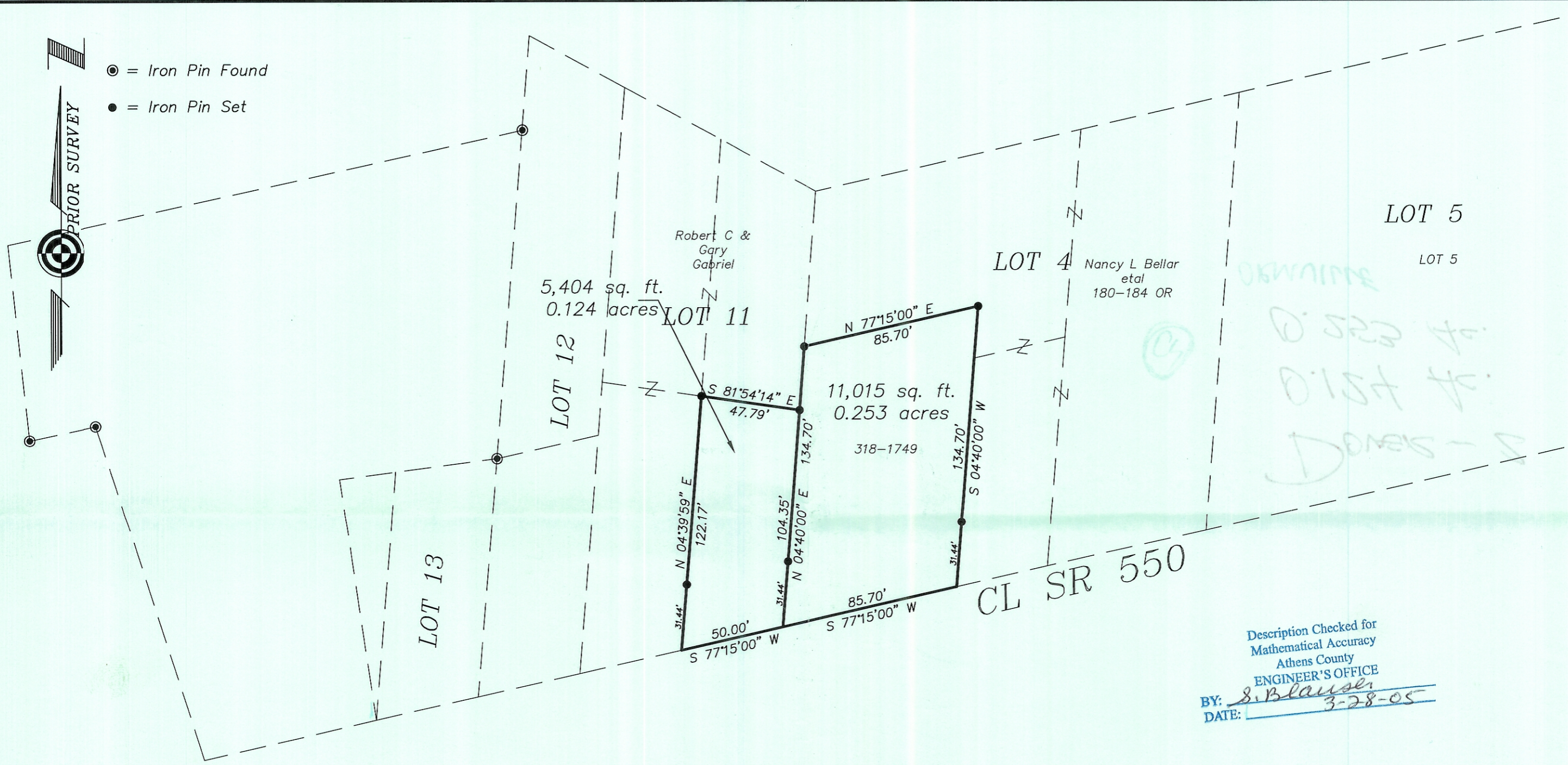


● = Iron Pin Found
● = Iron Pin Set

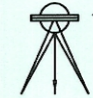


Description Checked for
Mathematical Accuracy
Athens County
ENGINEER'S OFFICE
BY: S. Blausen
DATE: 3-28-05

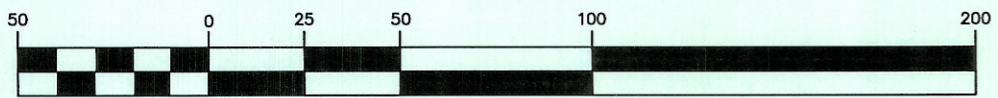
Plat of Survey of Two Tracts
Situated in Section 2, Town 10, Range 14
Dover Township, Athens County, Ohio
Part of Lots 4 and 11 of the
Benjamin Orme Farm

Charles T. Newman
Charles T. Newman



Member of Professional Land Surveyors of Ohio Land Surveys, Subdivisions

C. TIM NEWMAN
Professional Surveyor
66 Elmwood Place Athens, Ohio 45701 740-594-1884
FAX 740-594-9413

GRAPHIC SCALE



(IN FEET)
1 inch = 50 ft.