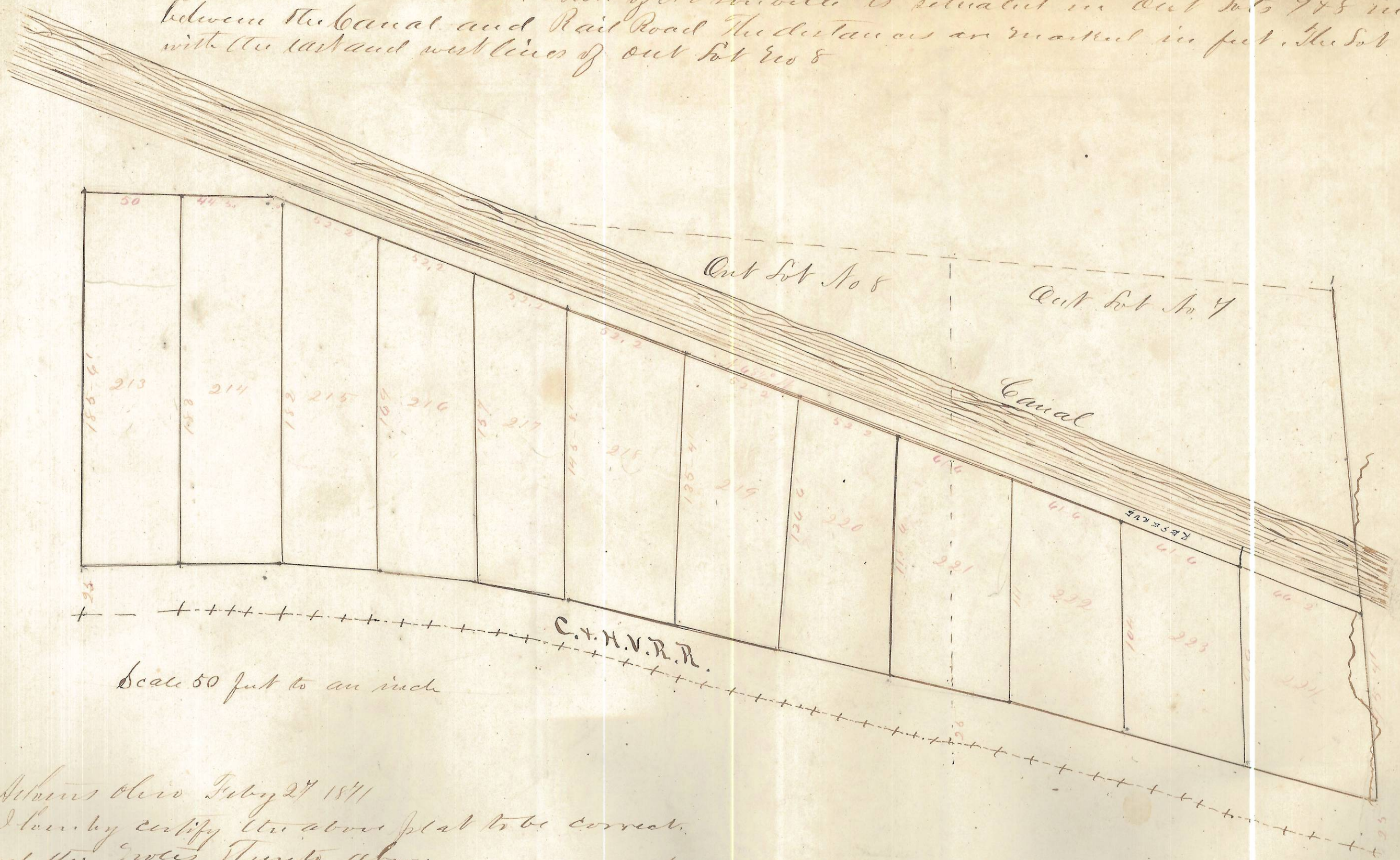


E.J. Cable's Addition to The Town of Nelsonville is situated in Out Lots 7 & 8 included between the Canal and Rail Road. The distances are marked in feet. The lot lines are parallel with the east and west lines of out lot nos 8



Scale 50 feet to an inch

Attest given July 27 1871  
I hereby certify the above plat to be correct  
and the notes true to above.  
John McKelvey Surveyor

Continued and Recorded March 7th 1871  
Attest. Joseph B. Allen  
Recorder

ENVELOPE: 83C  
E.J. CABLE'S ADDITION -  
NELSONVILLE