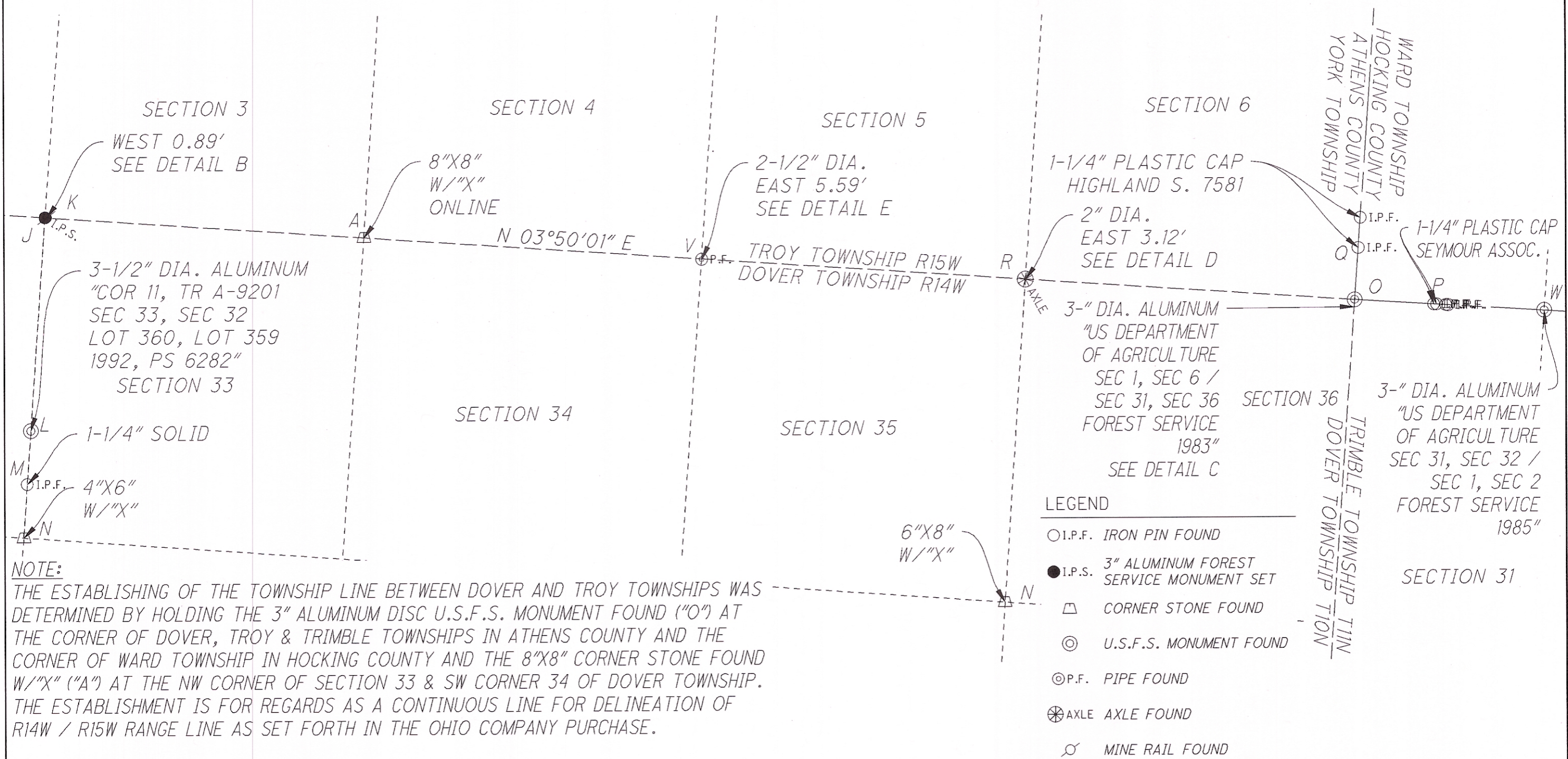



SURVEY FOR THE U.S. FOREST SERVICE

CONTRACT NO. AG-55N9-C-16-0009
 BAILEY'S MOUNTAIN BIKE TRAIL BOUNDARY SURVEY
 R14W / R15W RANGE LINE ESTABLISHMENT

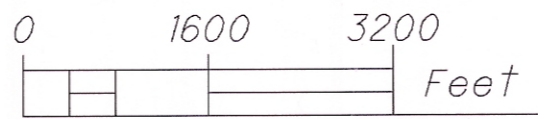


NOTE:
 THE ESTABLISHING OF THE TOWNSHIP LINE BETWEEN DOVER AND TROY TOWNSHIPS WAS DETERMINED BY HOLDING THE 3" ALUMINUM DISC U.S.F.S. MONUMENT FOUND ("O") AT THE CORNER OF DOVER, TROY & TRIMBLE TOWNSHIPS IN ATHENS COUNTY AND THE CORNER OF WARD TOWNSHIP IN HOCKING COUNTY AND THE 8"X8" CORNER STONE FOUND W/"X" ("A") AT THE NW CORNER OF SECTION 33 & SW CORNER 34 OF DOVER TOWNSHIP. THE ESTABLISHMENT IS FOR REGARDS AS A CONTINUOUS LINE FOR DELINEATION OF R14W / R15W RANGE LINE AS SET FORTH IN THE OHIO COMPANY PURCHASE.

- LEGEND**
- I.P.F. IRON PIN FOUND
 - I.P.S. 3" ALUMINUM FOREST SERVICE MONUMENT SET
 - △ CORNER STONE FOUND
 - ⊙ U.S.F.S. MONUMENT FOUND
 - ⊗ P.F. PIPE FOUND
 - ⊗ AXLE AXLE FOUND
 - ⊗ MINE RAIL FOUND


buckleygroup
 engineering + surveying

6801 SR 56
 ATHENS, OH 45701
 (740)592-5706
 www.buckleygroup.com



SHEET 2 OF 6

PROJECT NO.	SCALE	DRAWN BY:	CHECKED BY:
18123	1"=1600'	D.CONLEY	R.C.CANTER