

ENVELOPE: 125A

GLOUSTER - INCORPORATED  
CONTINUED FROM 124-B

# Map of The Village of Gloucester as Incorporated. See pages 80 & 81 for continuation of territory included in this map.

Joel Allen

J. Lo. Knight  
W. Cherry 18°  
Hickory 6°  
W. 20.17°  
W. 79.15°  
W. 38.20°  
W. 15.15°

Joel Allen

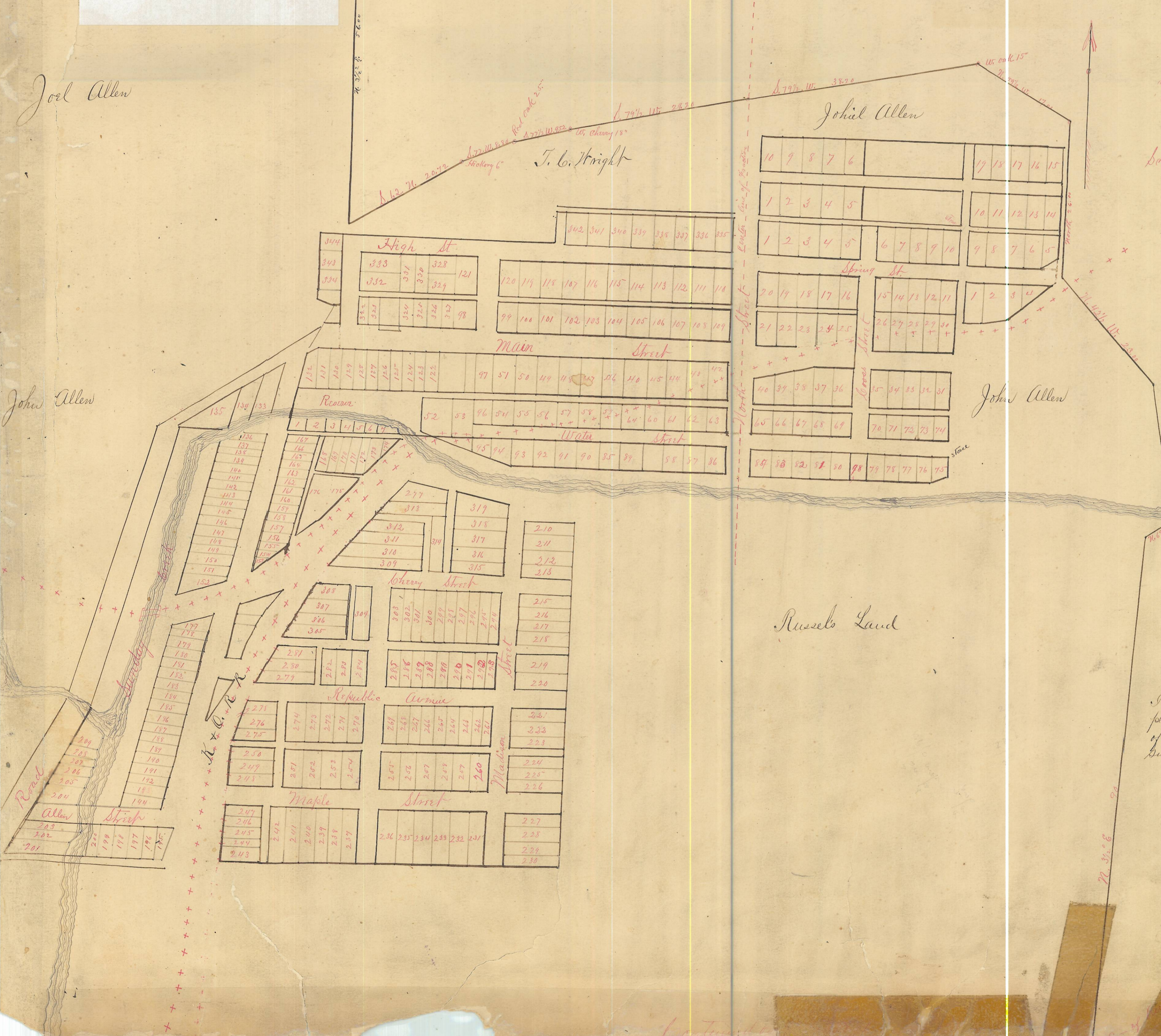
"Exhibit A."

Scale 10 rods to an inch

John Allen

John Allen

Russels Land



I hereby certify the above to be a correct  
plot of the proposed boundaries of the village  
of Gloucester, Athens County, Ohio as  
surveyed March 3<sup>d</sup> 1889  
M. K. Atkinson, Surveyor.