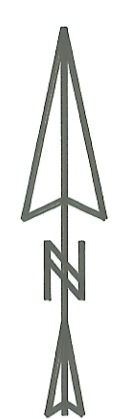


MATCH LINE

LINE	BEARING	DISTANCE
L 1	N 85°30'02"E	91.31'
L 2	S 10°02'52"E	30.00'
L 3	S 79°47'29"W	73.49'
L 4	S 85°30'02"W	42.88'
L 5	S 10°02'51"E	30.00'
L 6	N 58°09'10"E	71.36'
L 7	N 65°46'24"E	58.73'
L 8	N 78°21'43"E	31.89'
L 9	S 41°11'54"W	24.85'
L 10	N 73°24'36"W	29.73'
L 11	S 34°56'41"W	69.96'
L 12	S 31°04'32"W	69.75'
L 13	N 31°51'06"E	57.87'
L 14	N 23°35'07"E	45.16'
L 15	S 61°18'28"E	66.73'
L 16	S 52°19'22"E	75.32'
L 17	S 69°49'05"E	5.51'
L 18	S 56°36'25"E	52.76'
L 19	N 30°28'04"E	18.70'
L 20	S 71°42'26"E	48.10'
L 21	N 33°03'19"E	74.81'
L 22	S 13°15'50"E	60.97'
L 23	S 74°05'40"E	33.34'
L 24	N 23°34'25"E	29.58'

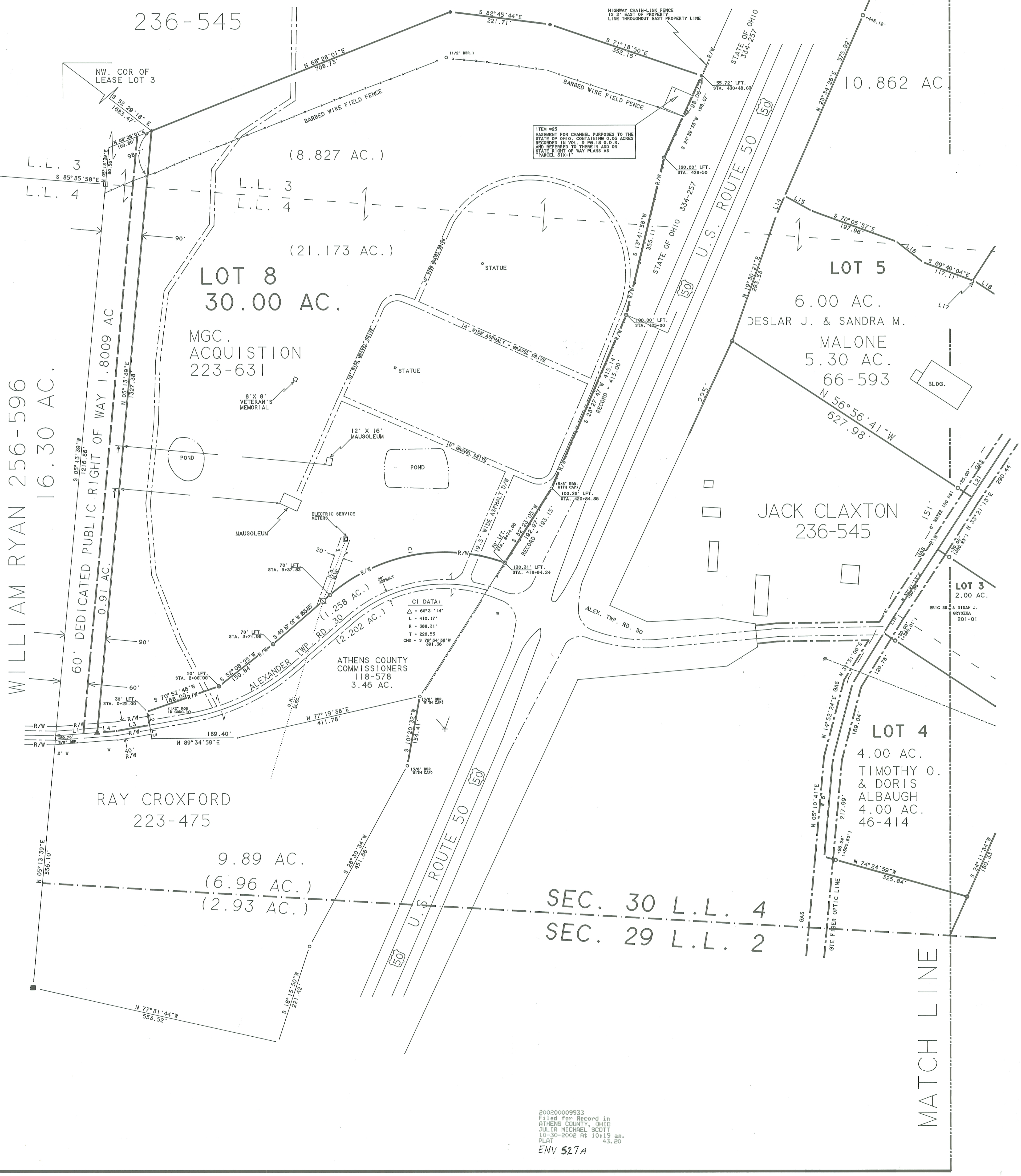


scale: 1" = 100'

CURVE	DELTA ANGLE	RADIUS	ARC	TANGENT	CHORD	CHORD BEARING
C 1	60°31'14"	388.31'	410.17'	226.55'	391.36'	S 79°34'38"W

- - ELECTRIC METERS
- - IRON PIN FOUND
- ⊙ - UTIL. POLE
- - STONE FOUND
- - STONE FOUND (CALC.)
- - IRON PIN SET, CAPPED 30" LONG, 5/8" REBAR
- ▲ - RAILROAD SPIKE SET
- - IRON PIN (CALC. LOCATION)

JACK CLAXTON
236-545



WILLIAM RYAN 256-596
16.30 AC.

60' DEDICATED PUBLIC RIGHT OF WAY 1.8009 AC.
0.91 AC.

LOT 8
30.00 AC.

MGC.
ACQUISITION
223-631

LOT 5
6.00 AC.
DESLAR J. & SANDRA M.

MALONE
5.30 AC.
66-593

JACK CLAXTON
236-545

LOT 4
4.00 AC.
TIMOTHY O.
& DORIS
ALBAUGH
4.00 AC.
46-414

LOT 3
2.00 AC.
ERIC S. & DORIS J. GRYZKA
201-01

RAY CROXFORD
223-475
9.89 AC.
(6.96 AC.)
(2.93 AC.)

SEC. 30 L.L. 4
SEC. 29 L.L. 2

MATCH LINE