

ENVELOPE: 356B

LOCATION PLAN - ATHENS-HOCKINGPORT ROAD & POMEROY-MARIETTA ROAD
ATH-50-35.45

LOCATION PLAN

ATHENS-HOCKINGPORT ROAD AND POMEROY-MARIETTA ROAD

U.S. ROUTE 50 SEC. (35.45)
ATHENS COUNTY, OHIO
TROY TWP. R.11, T.5, SEC'S. 27, 21, 22 & 16

Received _____
Recorded _____
Book _____ Page _____
County Recorder _____

FED. RD. DISTRICT	STATE	PROJECT
2	OHIO	

ATH-50-35.45
WAS-50-000
LIMITED ACCESS



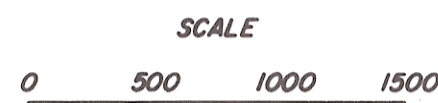
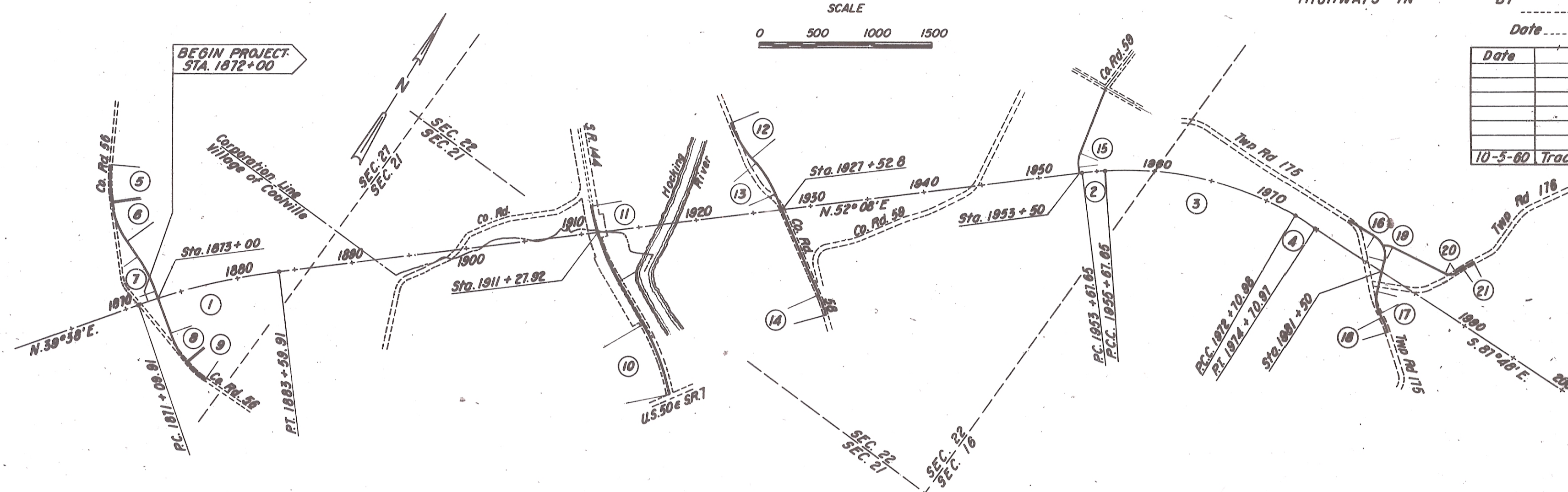
2/40

Signed _____
Date _____

I, HEREBY CERTIFY THAT THIS PLAN IS A TRUE DELINEATION OF A SURVEY MADE FOR THE OHIO DEPARTMENT OF HIGHWAYS IN

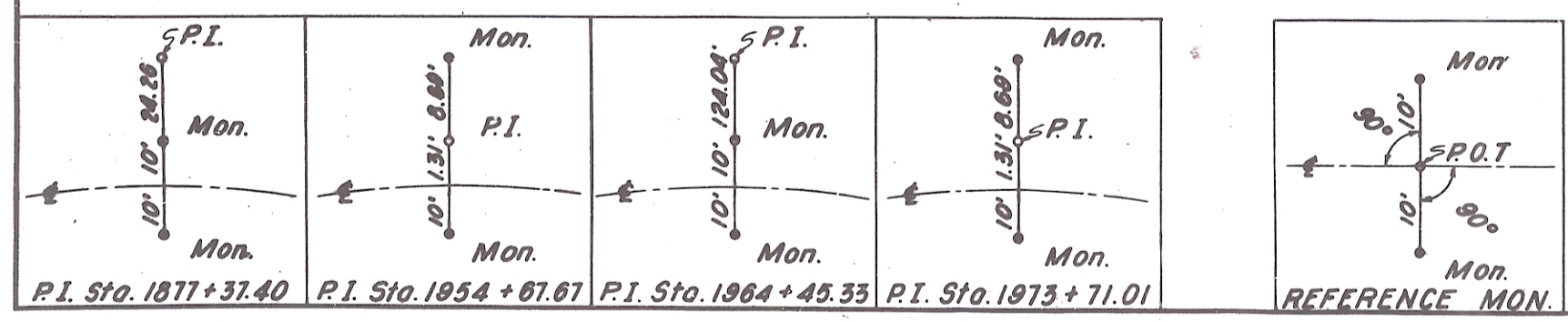
BY _____
Date _____

Date	Remarks	By
10-5-60	Tracing Completed (date of inking)	



PI = Sta. 1871 + 37.40 Δ = 12° 30' D = 1° 00' R = 5729.58' T = 627.49' L = 1250.00' E = 34.28'	PI = Sta. 1864 + 45.33 Δ = 34° 04' D = 2° 00' R = 2064.79' T = 677.68' L = 1703.33' E = 134.04'	PI = Sta. 8 + 87.87 Δ = 12° 40' D = 4° 00' R = 1432.39' T = 158.98' L = 316.67'	PI = Sta. 17 + 50.88 Δ = 16° 34' D = 5° 00' R = 1145.82' T = 166.85' L = 331.37'	PI = Sta. 27 + 31.69 Δ = 16° 10' D = 7° 30' R = 763.94' T = 108.49' L = 215.56'	PI = Sta. 14 + 27.10 Δ = 20° 43' D = 3° 00' R = 1909.86' T = 349.09' L = 690.58'	PI = Sta. 18 + 90.98 Δ = 18° 00' D = 5° 00' R = 1145.92' T = 161.05' L = 320.00'	PI = Sta. 1 + 09.71 Δ = 28° 56' 30" D = 22° 40' R = 252.72' T = 65.40' L = 127.68'	PI = Sta. 24 + 69.47 Δ = 39° 51' D = 20° 50' R = 275.02' T = 98.68' L = 191.29'	PI = Sta. 18 + 34.87 Δ = 32° 00' D = 38° 11' 49.92" R = 150' T = 43.01' L = 89.71'
PI = Sta. 1854 + 67.68 Δ = 3° 00' D = 1° 30' R = 3819.46' T = 100.03' L = 199.99' E = 1.31	PI = Sta. 1973 + 71.01 Δ = 3° 00' D = 1° 30' R = 3819.46' T = 100.03' L = 199.99' E = 1.31	PI = Sta. 12 + 42.14 Δ = 29° 05' 30" D = 8° 00' R = 716.20' T = 185.83' L = 363.85'	PI = Sta. 24 + 29.18 Δ = 21° 48' D = 8° 00' R = 716.20' T = 137.92' L = 272.50'	PI = Sta. 3 + 45.35 Δ = 19° 30' D = 3° 00' R = 1909.86' T = 328.18' L = 650.00'	PI = Sta. 13 + 00.88 Δ = 17° 40' D = 5° 00' R = 1145.916' T = 178.08' L = 353.33'	PI = Sta. 28 + 86.16 Δ = 7° 00' D = 4° 00' R = 1432.40' T = 87.61' L = 175.00'	PI = Sta. 19 + 90.87 Δ = 69° 50' D = 28° 38' 52.44" R = 200.00' T = 139.61' L = 243.76	PI = Sta. 26 + 58.53 Δ = 10° 10' D = 7° 30' R = 783.844' T = 67.96' L = 135.56'	PI = Sta. 23 + 55.87 Δ = 58° 15' D = 53° 43' 19.5" R = 91.35' T = 50.08' L = 92.87'

REFERENCE MONUMENTS AS PER SKETCH TO BE SET BEFORE OR AFTER CONSTRUCTION



P.T. Sta. 1883 + 59.91	P.O.T. Sta. 1925 + 00.00	P.C.C. Sta. 1955 + 67.65
P.O.T. Sta. 1880 + 00.00	P.O.T. Sta. 1930 + 00.00	P.C.C. Sta. 1972 + 70.98
P.O.T. Sta. 1895 + 00.00	P.O.T. Sta. 1935 + 00.00	P.T. Sta. 1974 + 70.97
P.O.T. Sta. 1900 + 00.00	P.O.T. Sta. 1940 + 00.00	P.O.T. Sta. 1980 + 00.00
P.O.T. Sta. 1905 + 00.00	P.O.T. Sta. 1945 + 00.00	P.O.T. Sta. 1985 + 00.00
P.O.T. Sta. 1910 + 00.00	P.O.T. Sta. 1949 + 00.00	P.O.T. Sta. 1990 + 00.00
P.O.T. Sta. 1914 + 00.00	P.C. Sta. 1953 + 67.65	P.O.T. Sta. 1995 + 00.00
P.O.T. Sta. 1921 + 00.00		P.O.T. Sta. 2000 + 00.00

PI = Sta. 25 + 31
Δ = 5° 50'
D = 4° 00'
R = 1432.40'
T = 72.88'
L = 145.83'

RIGHT OF WAY LOCATION PLAN