

PROPERTY DESCRIPTION

Being situated in the Northeast Quarter of Section 13, T-10-N, R-15-W, Lee Township, Athens County, Ohio, being a part of the Wallace J. Myers and Rose O'Sharon Myers land (V368/697), and being more particularly described as follows;

Commencing at a set iron pin at the Northwest corner of the East Half of Section 13 as the PLACE OF BEGINNING of this description;

Thence, S 85° 54' 52" E, on the R. A. Eberts, Inc., line (V38/944), a distance of 250.00 feet to a set iron pin being on the North line of Section 13;

Thence, S 4° 07' 30" W, through the Myers land, a distance of 520.25 feet to a set iron pin being on the R. A. Eberts, Inc., line (V55/964);

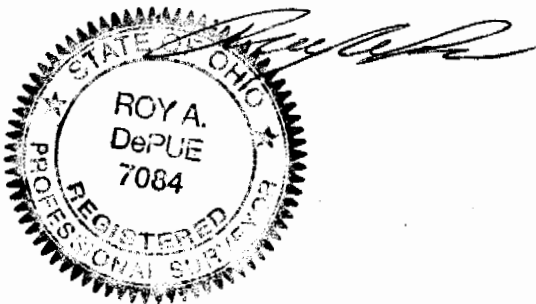
Thence, N 85° 39' 45" W, on the Eberts line, a distance of 250.00 feet to a set iron pin being on the R. A. Eberts, Inc., line (V38/932) and being on the Mid section line;

Thence, N 4° 07' 30" E, on the Eberts line, a distance of 519.15 feet to the PLACE OF BEGINNING containing 2.983 acres.

Bearings are based on a previous survey. Set iron pins are 5/8" x 36" with plastic cap number 7084.

SUBJECT TO ALL EASEMENTS, RIGHTS-OF-WAY, RESTRICTIONS, AND RESERVATIONS OF RECORD.

PREPARED FROM A SURVEY IN JUNE, 1998, BY ROY A. DePUE & ASSOCIATES, INC., ROY A. DePUE, PS7084.



Description Checked for  
Mathematical Accuracy  
Athens County  
ENGINEER'S OFFICE  
BY: S. Blausch  
DATE: 7-9-98

LEE #13

PROPERTY DESCRIPTION

Being situated in the Northeast Quarter of Section 13, T-10-N, R-15-W, Lee Township, Athens County, Ohio, being a part of the Wallace J. Myers and Rose O'Sharon Myers land (V368/697), and being more particularly described as follows;

Commencing at a set iron pin at the Northwest corner of the East Half of Section 13 as the PLACE OF BEGINNING of this description;

Thence, S 85° 54' 52" E, on the R. A. Eberts, Inc., line (V38/944), a distance of 250.00 feet to a set iron pin being on the North line of Section 13;

Thence, S 4° 07' 30" W, through the Myers land, a distance of 520.25 feet to a set iron pin being on the R. A. Eberts, Inc., line (V55/964);

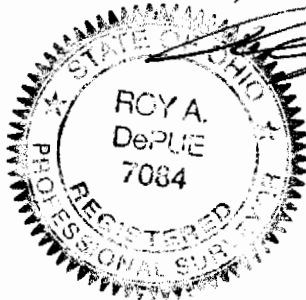
Thence, N 85° 39' 45" W, on the Eberts line, a distance of 250.00 feet to a set iron pin being on the R. A. Eberts, Inc., line (V38/932) and being on the Mid section line;

Thence, N 4° 07' 30" E, on the Eberts line, a distance of 519.15 feet to the PLACE OF BEGINNING containing 2.983 acres.

Bearings are based on a previous survey. Set iron pins are 5/8" x 36" with plastic cap number 7084.

SUBJECT TO ALL EASEMENTS, RIGHTS-OF-WAY, RESTRICTIONS, AND RESERVATIONS OF RECORD.

PREPARED FROM A SURVEY IN JUNE, 1998, BY ROY A. DePUE & ASSOCIATES, INC., ROY A. DePUE, PS7084.



Description Checked for  
Mathematical Accuracy  
Athens County  
ENGINEER'S OFFICE  
BY: S. Blause  
DATE: 7-9-98

BEARINGS BASED ON A PREVIOUS SURVEY.  
USE TO DENOTE ANGLES ONLY.



- REF. DOCS.  
1. TAX PLATS  
2. DEEDS AND PRIOR AS LISTED  
3. USGS QUAD. MAP  
4. PRIOR SURVEYS  
5. ODOT R/W MAPS

NOTE:  
TRACT 1 TO TRANSFER TO ADJOINER R. A. EBERTS, INC.  
TRACT 2 TO TRANSFER TO ADJOINER WALLACE J. MYERS.

WALDEN WOODS SUBDIVISION ENV. 475 A & B  
S 85°54'52"E 250.00'  
R.A. EBERTS, INC. V38/944 SEC. 14 SEC. 13

NORTHWEST CORNER OF THE EAST HALF OF SEC. 13

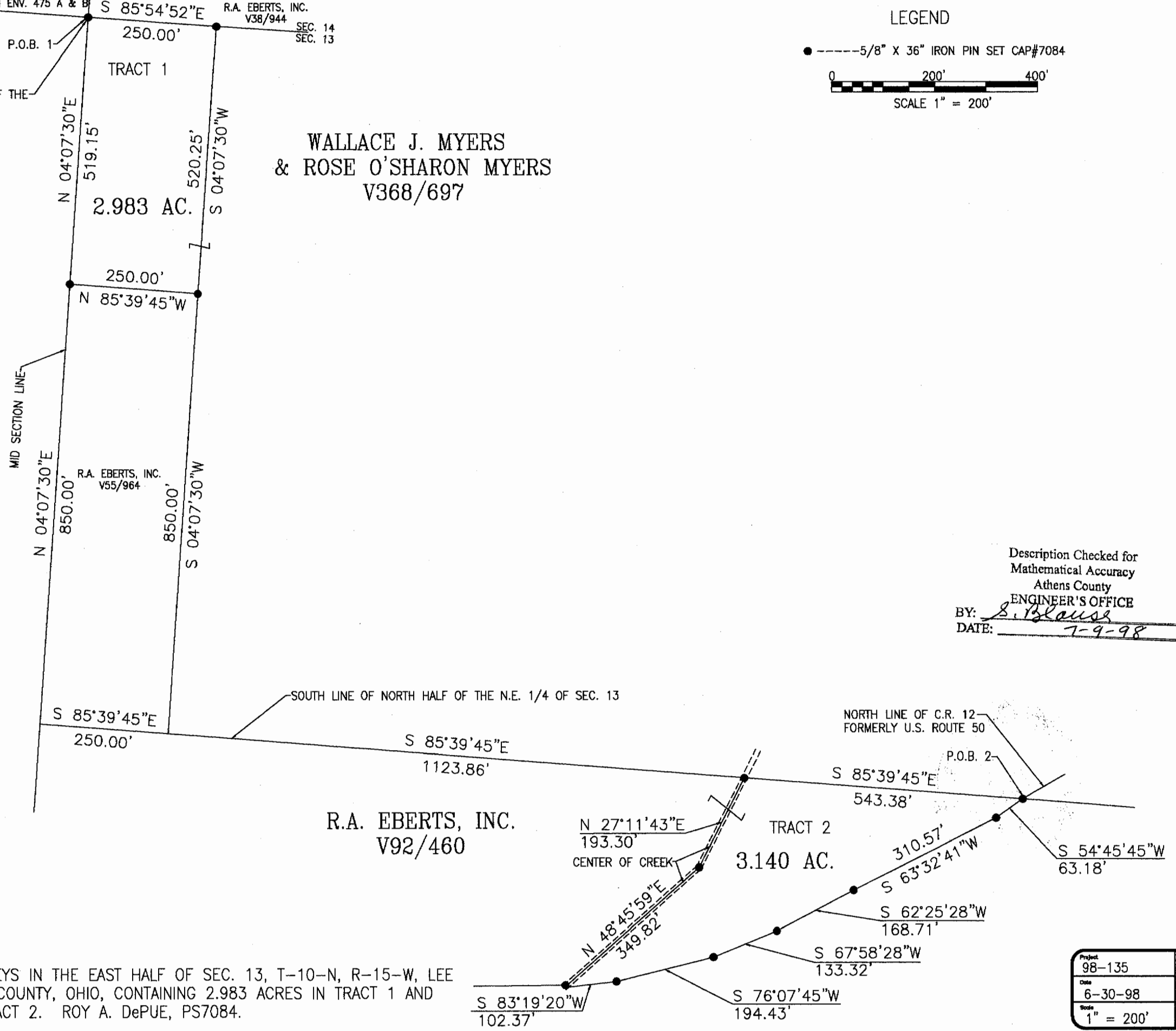
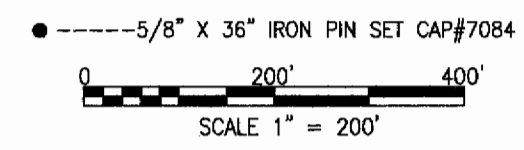
R.A. EBERTS, INC. V38/932

MID SECTION LINE

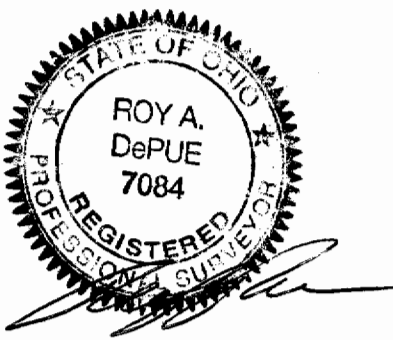
R.A. EBERTS, INC. V55/964

WALLACE J. MYERS & ROSE O'SHARON MYERS V368/697

LEGEND



Description Checked for  
Mathematical Accuracy  
Athens County  
ENGINEER'S OFFICE  
BY: S. Blause  
DATE: 7-9-98



**ROY A. DePUE & ASSOCIATES, INC.**  
ENGINEERING & SURVEYING  
35510 LAKEVIEW ROAD  
HAMDEN, OHIO 45634  
740-384-5218

PLAT OF TWO SURVEYS IN THE EAST HALF OF SEC. 13, T-10-N, R-15-W, LEE TOWNSHIP, ATHENS COUNTY, OHIO, CONTAINING 2.983 ACRES IN TRACT 1 AND 3.140 ACRES IN TRACT 2. ROY A. DePUE, PS7084.

|                    |             |
|--------------------|-------------|
| Project<br>98-135  | Sheet<br>P1 |
| Date<br>6-30-98    |             |
| Scale<br>1" = 200' |             |