

BRANNER SURVEYING
MEMBER-PROFESSIONAL LAND SURVEYORS OF OHIO

12500 PEACH RIDGE ROAD
ATHENS, OHIO 45701

JOHN M. BRANNER
Registered Land Surveyor

TELEPHONE
(614) 592-5778

DESCRIPTION OF A 13.638 ACRE TRACT

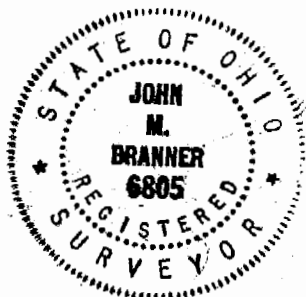
Situated in Section 13, T.10,R.15, Lee Township, Athens County, Ohio and being more particularly described as follows:

Commencing at a point where the West-line of Section 13 intersects with the center-line of U. S. 50 thence, South 77 Degrees 34 Minutes 46 Seconds East, 1504.71 feet to a rail road spike found at the North-west corner of a 5.067 acre tract; thence, North 88 Degrees 41 Minutes 16 Seconds East, 90.07 feet:thence, continuing along U.S. 50, South 86 Degrees 34 Minutes 40 Seconds East, 464.77 feet to the point of beginning for the tract of land herein described:

Thence, South 86 Degrees 34 Minutes 41 Seconds East, 660.27 feet to a point; thence, South 03 Degrees 53 Minutes 10 Seconds West, 705.49 feet to an iron pin set in the Northerly L/A line of State Route 346, passing an iron pin set at 64.49 feet; thence, along said line South 64 Degrees 47 Minutes 22 Seconds West, 133.57 feet to a point; thence, South 66 Degrees 37 Minutes 32 Seconds West, 545.63 feet to a point; thence, South 78 Degrees 14 Minutes 03 Seconds West, 91.72 feet to an iron pin set; thence, leaving said L/A line North 05 Degrees 33 Minutes 53 Seconds East, 451.90 feet to an iron pin at the easterly most corner of a 5.067 acre tract; thence, North 05 Degrees 30 Minutes 04 Seconds East, 588.29 feet (passing an iron pin set at 537.21 feet) to the point of beginning and containing 13.638 acres.

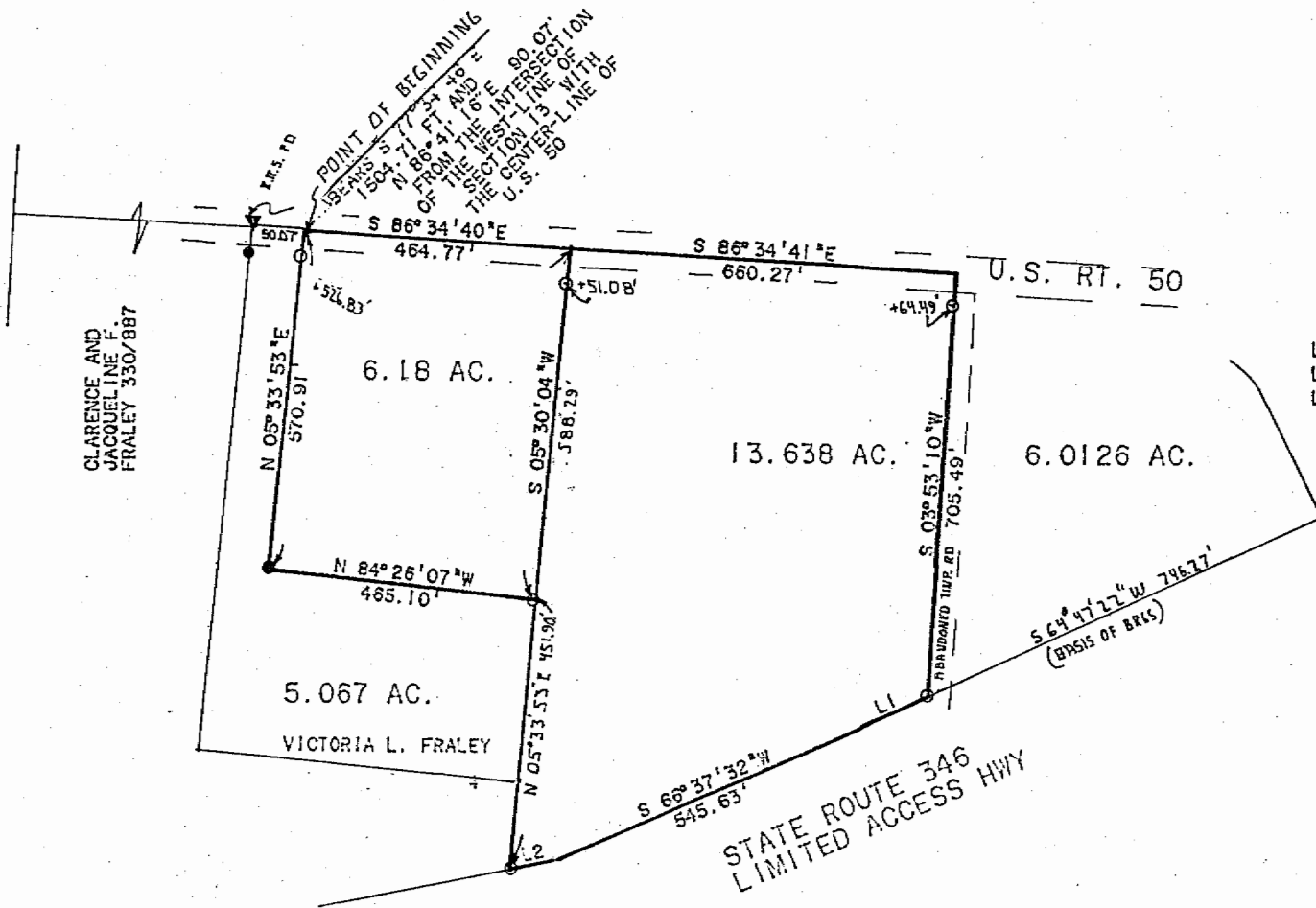
Subject to all easements and rights of way of record.

John M. Branner P.S. 6805



Description checked for
Mathematical Accuracy
ATHENS COUNTY
ENGINEER'S OFFICE
BY: Cheryl K. Ledges
DATE: 3/15/01

4
LPE #13



LINE	BEARING	DISTANCE
L 1	S 64° 47' 22" W	133.57'
L 2	S 78° 14' 03" W	91.72'



SCALE: 1 INCH = 200 FT.
 ● IRON PIN FOUND
 ○ IRON PIN SET



SURVEY OF A 6.18 ACRE TRACT AND A 13.638 ACRE TRACT IN SECTION 13, T.10, R.15, LEE TOWNSHIP, ATHENS CO. OHIO SURVEYED MARCH 1991

John M. Branner
 JOHN M. BRANNER P. S. 6905

12500 N. PEACH RIDGE ROAD ATHENS OHIO 45701 PH = 592-5778

5