

BRANNER SURVEYING

MEMBER-PROFESSIONAL LAND SURVEYORS OF OHIO

12500 N. PEACH RIDGE ROAD
ATHENS, OHIO 45701

JOHN M. BRANNER
Registered Land Surveyor

TELEPHONE
(614) 592-5778

DESCRIPTION OF A 5.04 ACRE TRACT

Situated in Fraction #1, Sections 14 and 15, T.10 N. R.15 W. , Lee Township, Athens County, Ohio and being more particularly described as follows:

Commencing at the North-east corner of Fraction #1, thence, West, 29.9 chains to Grantor's North-east corner ; thence, South 03 minutes 31 seconds West, a distance of 2323.91 feet; thence North 85 degrees 57 minutes 39 seconds West, a distance of 49.46 feet; thence North 86 degrees 59 minutes 24 seconds West, a distance of 1229.51 feet; thence North 54 degrees 10 minutes 58 seconds West, a distance of 607.64 feet; thence North 64 degrees 50 minutes 55 seconds West, a distance of 716.28 feet to a spike found in County Road #10; thence, along said road, North 40 degrees 08 minutes 37 seconds East, a distance of 93.17 feet to the POINT OF BEGINNING for the tract of land herein described:

thence continuing along said road, North 40 Degrees 08 Minutes 37 Seconds East, a distance of 276.27 feet;
thence North 39 degrees 30 minutes 15 seconds East, a distance of 3.73 feet to a point;
thence South 64 degrees 31 minutes 47 seconds East, a distance of 830.26 feet, passing an iron pin set at 30.00 feet;
thence South 45 degrees 12 minutes 08 seconds West, a distance of 283.01 feet to an iron pin set;
thence North 64 degrees 50 minutes 55 seconds West, a distance of 805.61 feet (passing an iron pin set at 775.61 feet) to the POINT OF BEGINNING; said described tract containing 5.040 acres. Subject to all easements and rights of way of record.


John M. Branner P.S. 6805



Description checked for
Mathematical Accuracy
ATHENS COUNTY
ENGINEER'S OFFICE

BY: S. Blausen
DATE: 7-1-93

See # 14

69

BRANNER SURVEYING

MEMBER-PROFESSIONAL LAND SURVEYORS OF OHIO

12500 N. PEACH RIDGE ROAD
ATHENS, OHIO 45701

JOHN M. BRANNER
Registered Land Surveyor

TELEPHONE
(614) 592-5778

DESCRIPTION OF A 5.131 ACRE TRACT

Situated in Fraction #1, Sections 14 and 15, T.10 N. R.15 W. , Lee Township, Athens County, Ohio and being more particularly described as follows:

Commencing at the North-east corner of Fraction #1, thence, West, 29.9 chains to Grantor's North-east corner ; thence, South 03 minutes 31 seconds West, a distance of 2323.91 feet; thence North 85 degrees 57 minutes 39 seconds West, a distance of 49.46 feet; thence North 86 degrees 59 minutes 24 seconds West, a distance of 1229.51 feet; thence North 54 degrees 10 minutes 58 seconds West, a distance of 607.64 feet; thence North 64 degrees 50 minutes 55 seconds West, a distance of 716.28 feet to a spike found in County Road #10; thence, along said road, North 40 degrees 08 minutes 37 seconds East, a distance of 93.17 feet; thence continuing along said road, North 40 Degrees 08 Minutes 37 Seconds East, a distance of 276.27 feet; thence, North 39 Degrees 30 Minutes 15 Seconds East, 3.73 feet to the POINT OF BEGINNING for the tract of land herein described:

thence North 39 degrees 30 minutes 15 seconds East, a distance of 280.00 feet;

thence, leaving said road, South 64 degrees 50 minutes 55 seconds East, a distance of 802.92 feet, passing an iron pin set at 30.00 feet;

thence South 33 degrees 49 minutes 25 seconds West, a distance of 279.07 feet to an iron pin set;

thence North 64 degrees 31 minutes 47 seconds West, a distance of 830.26 feet (passing an iron pin set at 800.26 feet) to the POINT OF BEGINNING; said described tract containing 5.131 acres.

Subject to all easements and rights of way of record.


John M. Branner P.S. 6805

Description checked for
Mathematical Accuracy
ATHENS COUNTY
ENGINEER'S OFFICE *S. Blouse*
BY: _____
DATE: 7-1-93



BRANNER SURVEYING

MEMBER-PROFESSIONAL LAND SURVEYORS OF OHIO

12500 N. PEACH RIDGE ROAD
ATHENS, OHIO 45701

JOHN M. BRANNER
Registered Land Surveyor

TELEPHONE
(614) 592-5778

DESCRIPTION OF A 5.009 ACRE TRACT

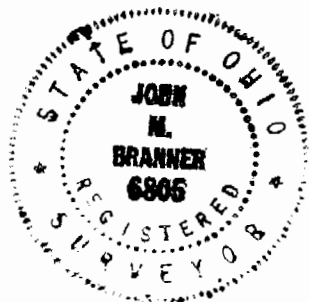
Situated in Fraction #1, Sections 14 and 15, T.10 N. R.15 W. , Lee Township, Athens County, Ohio and being more particularly described as follows:

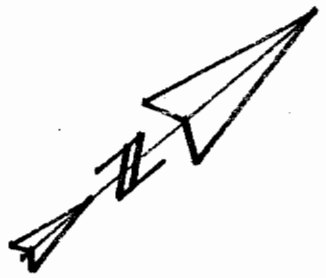
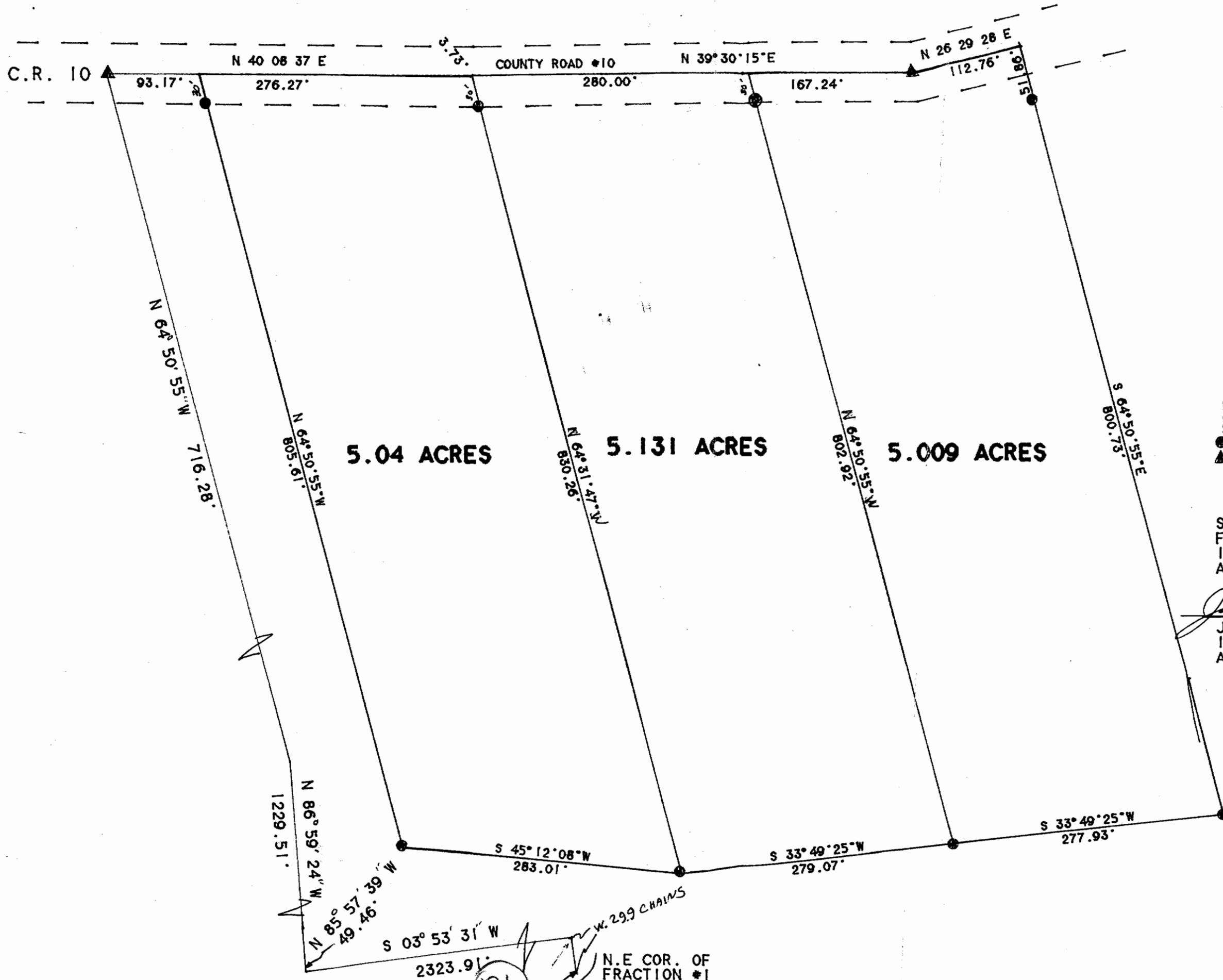
Commencing at the North-east corner of Fraction #1, thence, West, 29.9 chains to Grantor's North-east corner ; thence, South 03 minutes 31 seconds West, a distance of 2323.91 feet; thence North 85 degrees 57 minutes 39 seconds West, a distance of 49.46 feet; thence North 86 degrees 59 minutes 24 seconds West, a distance of 1229.51 feet; thence North 54 degrees 10 minutes 58 seconds West, a distance of 607.64 feet; thence North 64 degrees 50 minutes 55 seconds West, a distance of 716.28 feet to a spike found in County Road #10; thence, along said road, North 40 degrees 08 minutes 37 seconds East, a distance of 93.17 feet; thence continuing along said road, North 40 Degrees 08 Minutes 37 Seconds East, a distance of 276.27 feet; thence, North 39 Degrees 30 Minutes 15 Seconds East, 3.73 feet; thence, North 39 Degrees 30 minutes 15 seconds East, a distance of 280.00 feet to the point of beginning for the tract of land herein described:

thence North 39 degrees 30 minutes 15 seconds East, a distance of 167.24 feet to a spike found;
thence, North 26 degrees 29 minutes 26 seconds East, a distance of 112.76 feet to a point;
thence, leaving said road, South 64 degrees 50 minutes 55 seconds East, a distance of 800.73 feet, passing an iron pin set at 51.86 feet;
thence South 33 degrees 49 minutes 25 seconds West, a distance of 277.93 feet;
thence North 64 degrees 50 minutes 55 seconds West, a distance of 802.92 feet (passing an iron pin set at 772.92 feet) to the POINT OF BEGINNING; said described tract containing 5.009 acres. Subject to all easements and rights of way of record.


JOHN M. BRANNER P.S. 6805

Description checked for
Mathematical Accuracy
ATHENS COUNTY
ENGINEER'S OFFICE
BY: S. Blause
DATE: 7-1-93

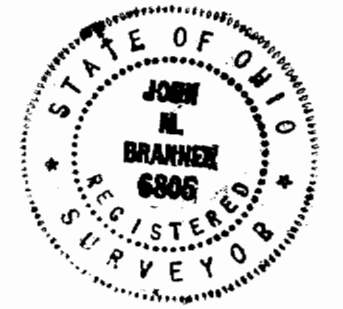




SCALE 1 INCH = 100 FEET
 ● - IRON PIN SET
 ▲ - SPIKE FOUND

SURVEY OF THREE TRACTS IN
 FRACTION #1. SECTIONS 14 &
 15. T.10. R.15. LEE TOWNSHIP
 ATHENS COUNTY, OHIO
 SURVEYED JUNE 1993

John M. Branner
 JOHN M. BRANNER P.S. 6805
 12500 N. PEACH RIDGE ROAD
 ATHENS, OHIO 592-5778



76

75