



C. Thomas Smith & Associates  
P.O. Box 393  
Racine, Ohio 45771  
740-949-2524

DESCRIPTION OF SURVEY FOR RICHARD AKERS

BEING A PART OF A TRACT OF LAND TRANSFERRED TO EARL AKERS AS RECORDED IN DEED BOOK 362 AT PAGE 415, ATHENS COUNTY RECORDER'S OFFICE, ATHENS COUNTY OHIO, ALSO BEING A PART OF SECTION 16, TOWNSHIP-10-NORTH, RANGE-15-WEST, LEE TOWNSHIP, ATHENS COUNTY, STATE OF OHIO AND MORE PARTICULARLY DESCRIBED AS FOLLOWS:

BEGINNING AT A 5/8" IRON PIN WITH I.D. CAP SET WHICH BEARS NORTH 83°39'49" EAST A DISTANCE OF 1013.83 FEET AND NORTH 05°24'48" WEST A DISTANCE OF 1050.14 FEET FROM THE ASSUMED SOUTHWEST CORNER OF SAID SECTION 16, TOWNSHIP-10, RANGE-15;

THENCE NORTH 37°58'44" EAST A DISTANCE OF 83.50 FEET TO A 5/8" IRON PIN WITH I.D. CAP SET;

THENCE NORTH 64°59'44" EAST A DISTANCE OF 892.98 FEET TO A 5/8" IRON PIN WITH I.D. CAP SET;

THENCE NORTH 64°30'44" EAST A DISTANCE OF 405.18 FEET TO A 5/8" IRON PIN WITH I.D. CAP SET;

THENCE NORTH 74°16'44" EAST A DISTANCE OF 375.10 FEET TO A 5/8" IRON PIN WITH I.D. CAP SET;

THENCE NORTH 23°13'44" EAST A DISTANCE OF 132.00 FEET TO A 5/8" IRON PIN WITH I.D. CAP SET;

THENCE SOUTH 66°31'16" EAST A DISTANCE OF 198.00 FEET TO A 5/8" IRON PIN WITH I.D. CAP SET;

THENCE NORTH 61°06'28" EAST A DISTANCE OF 170.46 FEET TO A P.K. NAIL SET IN THE CENTER LINE OF COUNTY ROAD 10, BAKER ROAD;

THENCE ALONG SAID CENTER LINE THE FOLLOWING SIX COURSES:

1. SOUTH 39°22'33" WEST A DISTANCE OF 72.07 FEET TO A POINT;
2. SOUTH 26°52'13" WEST A DISTANCE OF 70.30 FEET TO A POINT;
3. SOUTH 15°55'19" WEST A DISTANCE OF 90.25 FEET TO A POINT;
4. SOUTH 03°30'26" WEST A DISTANCE OF 146.41 FEET TO A POINT;
5. SOUTH 03°12'01" EAST A DISTANCE OF 169.93 FEET TO A POINT;
6. SOUTH 10°33'02" WEST A DISTANCE OF 96.46 FEET TO A POINT;

THENCE LEAVING SAID CENTER LINE SOUTH 82°58'20" WEST PASSING THRU A 5/8" IRON PIN WITH I.D. CAP SET AT A DISTANCE OF 30.00 FEET AND GOING A TOTAL DISTANCE OF 1865.02 FEET TO THE PRINCIPAL POINT OF BEGINNING CONTAINING 15.001 ACRES± SUBJECT TO ALL LEGAL EASEMENTS AND RIGHTS-OF-WAY.

ALL IRON PINS SET ARE 5/8"x30" REBAR WITH PLASTIC I.D. CAP "CTS-6844".

BEARINGS ARE ASSUMED AND ARE FOR THE DETERMINATION OF ANGLES ONLY.

THE ABOVE DESCRIPTION WAS PREPARED FROM AN ACTUAL SURVEY MADE ON THE 18TH DAY OF APRIL, 2002, BY C. THOMAS SMITH, OHIO PROFESSIONAL SURVEYOR, #6844.

Description checked for  
Mathematical Accuracy  
ATHENS COUNTY  
ENGINEER'S OFFICE  
BY: S. Blauzer  
DATE: 4-25-02

C. Thomas Smith  
C. THOMAS SMITH, P.S. #6844

51

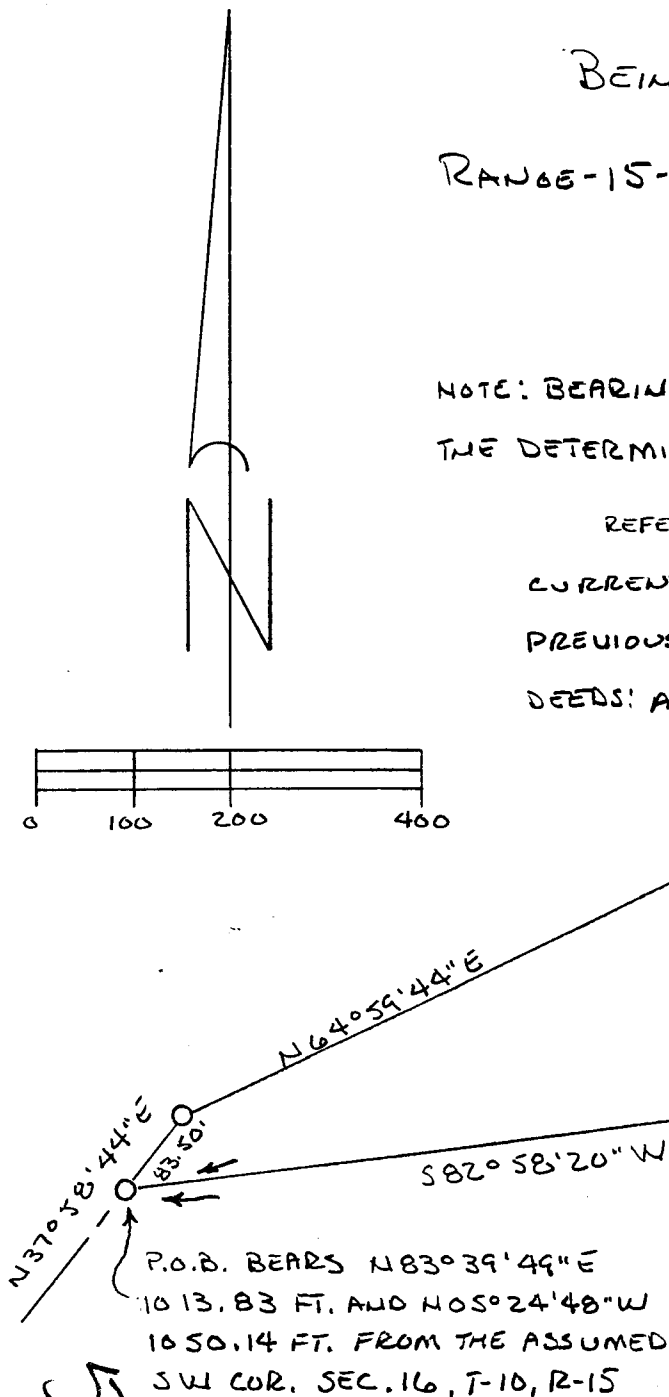
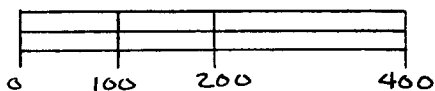
LEE #16

BEING A PART OF SECTION 16, TOWNSHIP-10-NORTH,  
RANGE-15-WEST, LEE TOWNSHIP, ATHENS COUNTY, OHIO.

NOTE: BEARINGS ARE ASSUMED AND ARE FOR  
THE DETERMINATION OF ANGLES ONLY.

REFERENCES

- CURRENT TAX PLATS
- PREVIOUS SURVEYS
- DEEDS: AS NOTED



15.001 ACRES ±  
EARL AKERS

268-332, 317-707, 360-771, 362-415

LEGEND

- 5/8" X 30" IRON PIN W/ID CAP  
"CTS-6844" SET
- ▲ - P.I. NAIL SET
- - POINT

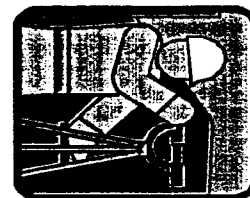
Description checked for  
Mathematical Accuracy  
ATHENS COUNTY  
ENGINEER'S OFFICE  
BY: S. Blausen  
DATE: 4-25-02

PLAT PREPARED FROM AN ACTUAL SURVEY  
MADE ON THE 18<sup>TH</sup> DAY OF APRIL, 2002 BY,

*C. Thomas Smith*

OHIO PROFESSIONAL SURVEYOR

C. Thomas Smith & Associates  
P.O. Box 393  
Racine, Ohio 45771  
740-949-2524



No. 6844