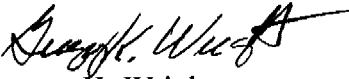


Description of 0.156 acres.

Situated in Lot 350 of the Escue Subdivision in the Village of Albany, Lee Township, Athens County, Ohio and being more particularly described as follows;

Being 56.60 feet off the south side of said Lot 350 as measured along the west side thereof and containing 0.156 acres.



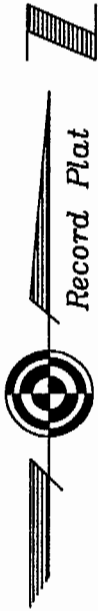
Gregory K. Wright  
Registered Surveyor S-6535  
11684 Channingway Blvd.  
The Plains, Ohio 45780

Description checked for  
Mathematical Accuracy  
ATHENS COUNTY  
ENGINEER'S OFFICE  
BY: K. Ambler  
DATE: 5/17/99

NO CALLS ON  
DESCRIPTION  
OK FOR ARCHIVE  
K

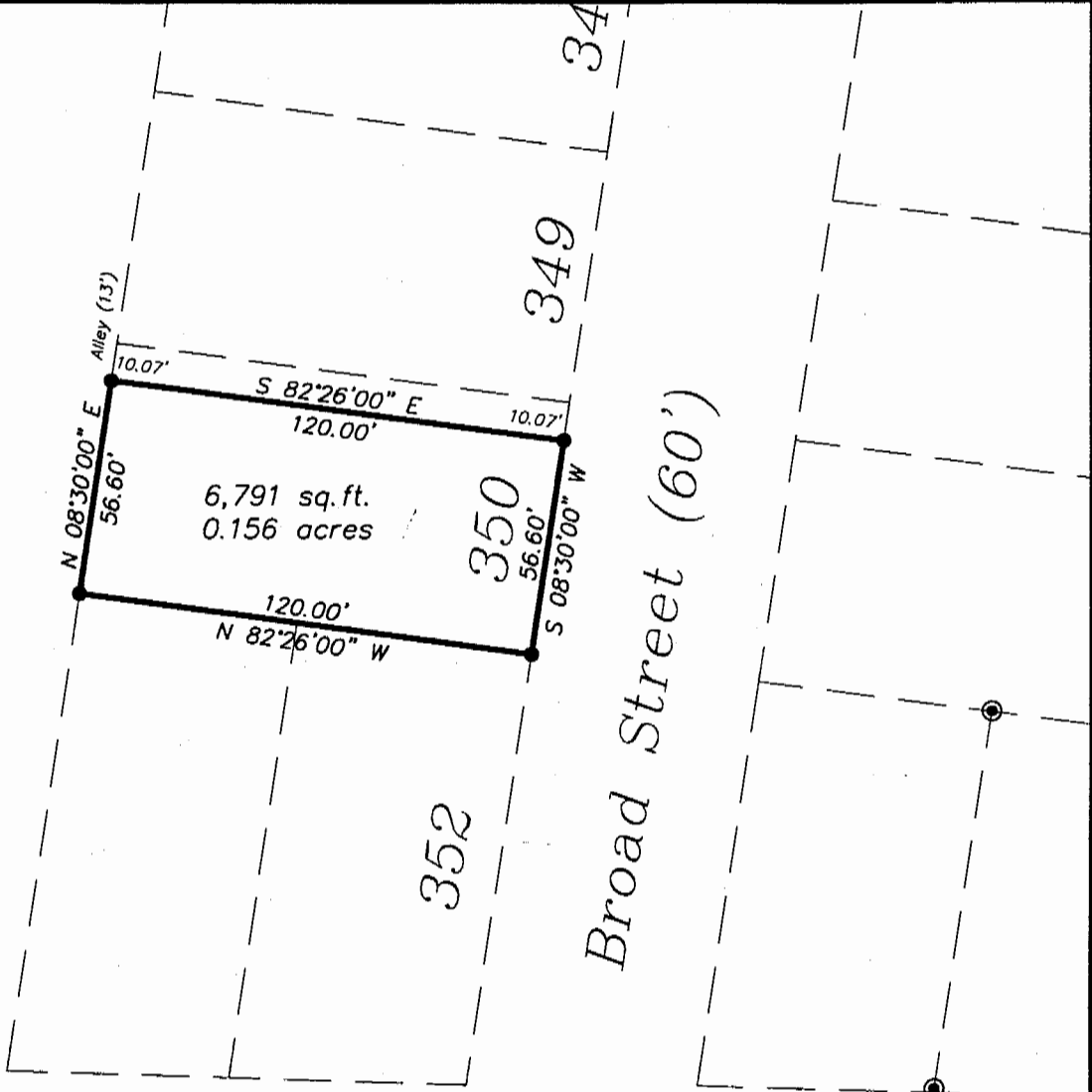
53

Subdivision  
Escue  
LEE #2



GRAPHIC SCALE

1 inch = 50 ft.  
( IN FEET )



Lee Street

Plat of Survey of Part of Lot 350  
Escue Subdivision, Village of Albany,  
Lee Township, Athens County, Ohio

Surveyed Dec. 1998 for  
Randy Dille

*Gregory K. Wright*  
Gregory K. Wright

Description checked for  
Mathematical Accuracy  
ATHENS COUNTY  
ENGINEER'S OFFICE  
BY: *K. L. L...*  
DATE: 5-13-99



Gregory K. Wright

Professional Engineer  
Professional Surveyor

11684 Channingway Blvd  
The Plains, Ohio 45780  
740-797-4142  
FAX 740-797-8623

54