

**BRANNER SURVEYING  
12500 N. PEACH RIDGE ROAD  
ATHENS, OHIO 45701**

**DESCRIPTION OF 46.987 ACRE TRACT**

Situated in Section 23, T.10, R.15, Lee Township, Athens County, Ohio and being more particularly described as follows:

Beginning at an existing iron pin at the North-east corner of a 18.20 acre tract, said pin bears North 07 degrees 12 minutes 47 seconds East, 1694.27 feet and North 83 degrees 04 minutes 42 seconds West, 2163.74 feet from the South-east corner of Section 23;

Thence, North 57 degrees 20 minutes 15 seconds East, 602.34 feet to an iron pin set; thence, South 80 degrees 52 minutes 50 seconds East, 313.19 feet to an iron pin set; Thence, South 75 degrees 25 minutes 50 seconds East, 443.40 feet to an iron pin set; Thence, South 81 degrees 48 minutes 40 seconds East, 959.90 feet to an iron pin set; Thence, South 08 degrees 20 minutes 30 seconds West, 783.71 feet and along the center of a drive to a point in the drive where an iron pin set bears South 08 degrees 23 minutes 34 seconds West, 115.63 feet;

Thence, along said drive the following bearings and distances:

South 19 degrees 42 minutes 33 seconds West, 80.49'  
South 63 degrees 28 minutes 41 seconds West, 76.56 '  
North 71 degrees 17 minutes 41 seconds West, 223.12'  
South 77 degrees 52 minutes 17 seconds West, 85.20'  
South 58 degrees 17 minutes 50 seconds West, 410.96';  
South 82 degrees 03 minutes 44 seconds West, 101.17 feet  
North 78 degrees 20 minutes 42 seconds West, 170.95 feet;  
South 82 degrees 10 minutes 09 seconds West, 109.25 feet;  
South 66 degrees 21 minutes 50 seconds West, 143.20 feet to an iron pin set North of said drive;

Thence, South 44 degrees 44 minutes 36 seconds West, 447.59 feet to a point in Township Road, 10, passing an iron pin set at 413.72 feet;

Thence, along said road, North 41 degrees 22 minutes 06 seconds West, 228.99 feet to a point;

Thence, leaving said road, and with the lines of the aforementioned 18.20 acre tract, North 51 degrees 59 minutes 23 seconds East, 541.97 feet to an existing iron pin; Thence, along the line of said 18.20 acre tract North 41 degrees 57 minutes 58 seconds West, 1189.66 feet to the point of beginning and containing 46.987 acres.

Subject to all easements and rights of way of record.

The above description is based on a field survey by John M. Branner P.S.. 6805 completed August 2002



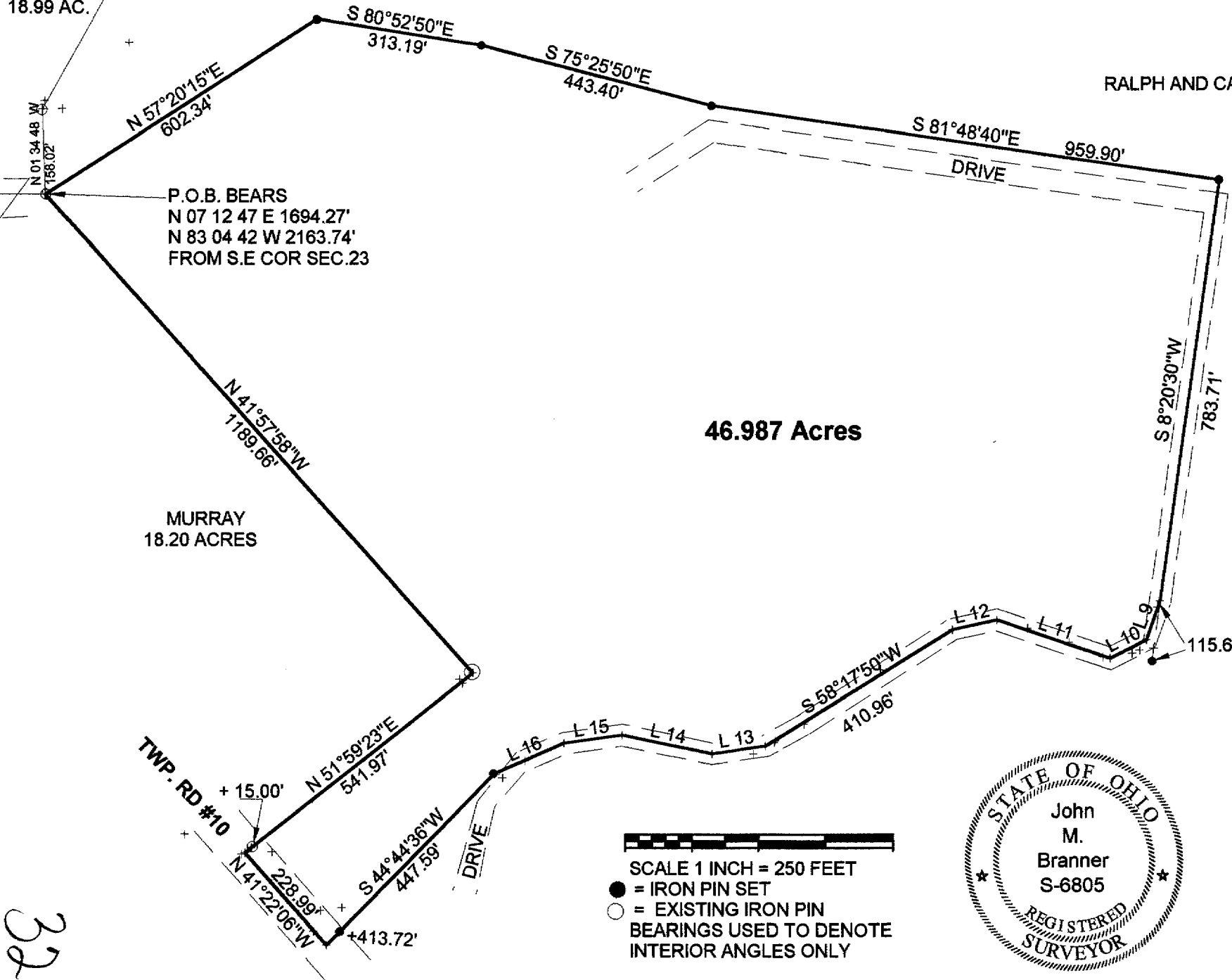
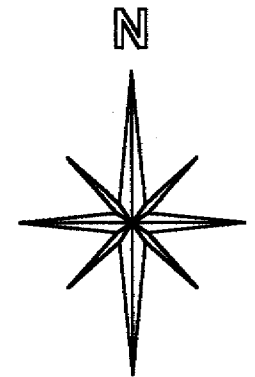
Description checked for  
Mathematical Accuracy  
ATHENS COUNTY  
ENGINEER'S OFFICE  
BY: S. Blause  
DATE: 8-19-02

31

LEE #23

MURRAY  
18.99 AC.

RALPH AND CATHERINE KEEFER



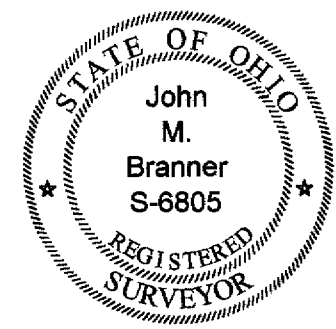
46.987 Acres

MURRAY  
18.20 ACRES

Line	Bearing	Distance
8	S 66°21'50"W	143.20'
9	S 19°42'33"W	80.49'
10	S 63°28'41"W	76.56'
11	N 71°17'41"W	223.12'
12	S 77°52'17"W	85.20'
13	S 82°03'44"W	101.17'
14	N 78°20'42"W	170.95'
15	S 82°10'09"W	109.25'
16	S 66°21'50"W	143.20'

**SURVEY OF A 46.987 ACRE TRACT IN  
SECTION 23 , T.10 , R.15 , LEE TOWNSHIP  
ATHENS COUNTY, OHIO  
SURVEYED AUGUST 2002**

BY: *John M. Branner*  
**JOHN M. BRANNER P.S. 6805  
12500 N. PEACH RIDGE ROAD  
ATHENS, OHIO 45701  
(740) 592-5778**



SCALE 1 INCH = 250 FEET  
● = IRON PIN SET  
○ = EXISTING IRON PIN  
BEARINGS USED TO DENOTE  
INTERIOR ANGLES ONLY

Description checked for  
Mathematical Accuracy  
ATHENS COUNTY  
ENGINEERS OFFICE  
BY: *S. Blausen*  
DATE: *8-19-02*

32