

DESCRIPTION OF A 8.077 ACRE TRACT

Situated in Section 23 of Lee Township, Athens County, Ohio and being more particularly described as follows:

Beginning at a utility pole fence corner calculated to bear N 84°57'59" W, 2743.89 feet from the South-east corner of Section 23,

Thence, along the East-line of Fraedrich(2-636), N 5°32'44" E, 251.49 feet to an iron pin set;

Thence, along new-lines created by this survey:

N 62°09'26" E, 785.26 feet to an iron pin set;

N 45°20'51" E, 132.60 feet to an iron pin set;

S 58°16'35" E, 247.02 feet to a point in Township Road 10, passing an iron pin set, passing an iron pin set at 167.43 feet;

Thence, along said road,

S 38°12'57" E, 172.45 feet;

S 41°49'27" E, 157.67 feet;

Thence, leaving said road, N 89°49'29" W, 263.78 feet to an iron pin set, passing an iron pin set at 21.69 feet;

Thence, S 71°19'39" W, 1025.11' feet to the point of beginning and containing 8.077 acres.

Subject to all easements and rights of way of record

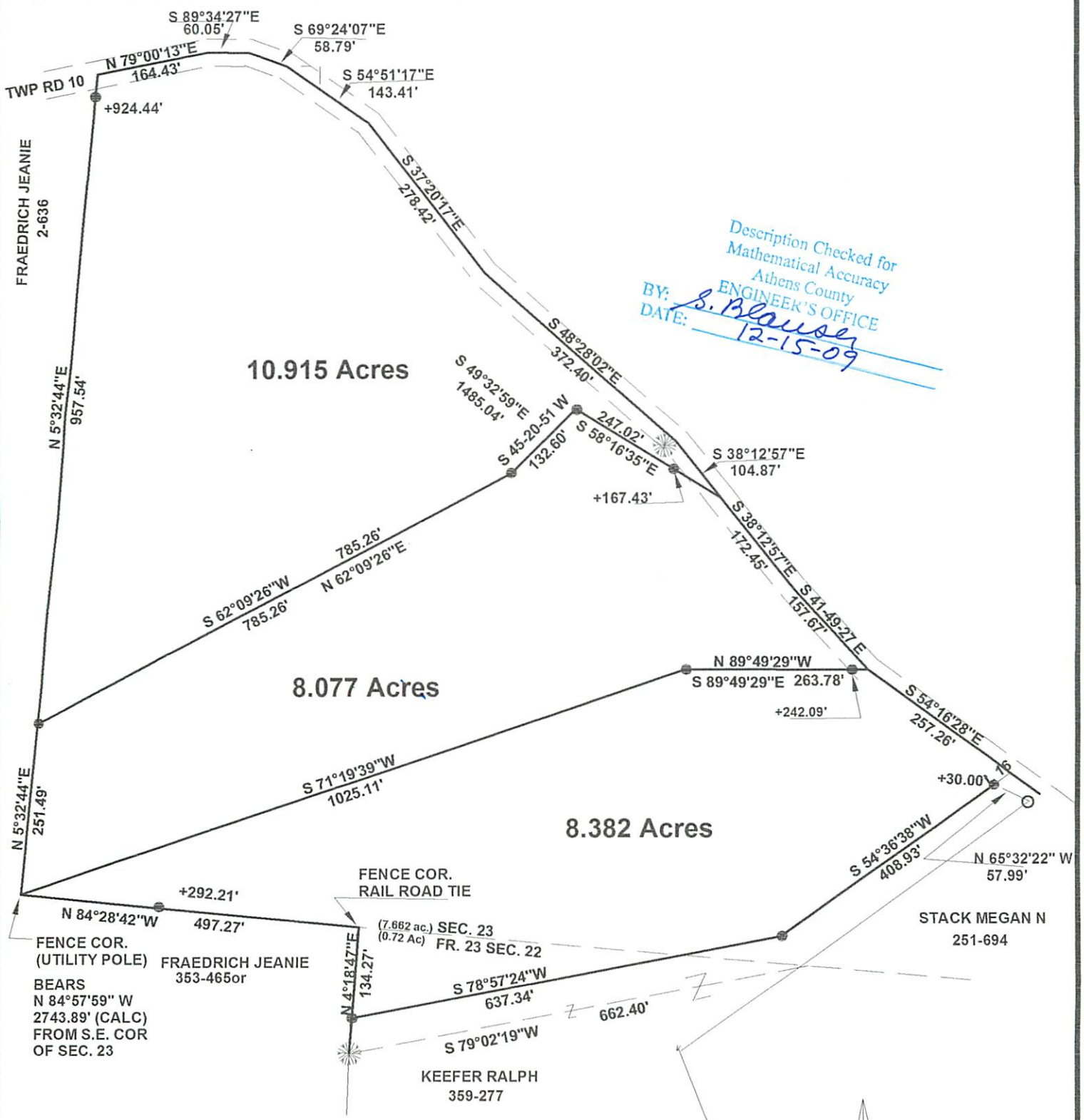
Iron pin set are 5/8" by 30" rebar w/id cap stamped P.S. 6805

Bearings are assumed and are to be used to denote interior angles only

The above description is based on a field survey by John M. Branner P.S. 6805 completed December 2009



Description Checked for
Mathematical Accuracy
Athens County
ENGINEER'S OFFICE
BY: S. Blausey
DATE: 12-11-09



Description Checked for
Mathematical Accuracy
Athens County
ENGINEER'S OFFICE
BY: *S. Blausen*
DATE: *12-15-09*

**SURVEY OF THREE TRACTS
IN SECTIONS 22 AND 23 OF
T.9 R.15, LEE TOWNSHIP
ATHENS COUNTY, OHIO
SURVEYED DECEMBER 2009**

John M. Branner
**JOHN M. BRANNER PS. 6805
12500 N. PEACH RIDGE ROAD
ATHENS, OHIO 45701
740-592-5778**



SCALE 1 INCH = 200 FEET
● = IRON PIN SET
○ = IRON PIN FOUND
BEARINGS ARE ASSUMED
AND ARE TO BE USED TO
DENOTE INTERIOR ANGLES ONLY