

BRANNER SURVEYING
MEMBER-PROFESSIONAL LAND SURVEYORS OF OHIO

PEACH RIDGE ROAD
ROUTE 3 BOX 240B
ATHENS, OHIO 45701

JOHN M. BRANNER
Registered Land Surveyor

TELEPHONE
(614) 592-5778

DESCRIPTION OF A 2.54 ACRES

Situated in the South-west Quarter of Section 3, T.10, R.15, Lee Township, Athens County, Ohio and being more particularly described as follows:

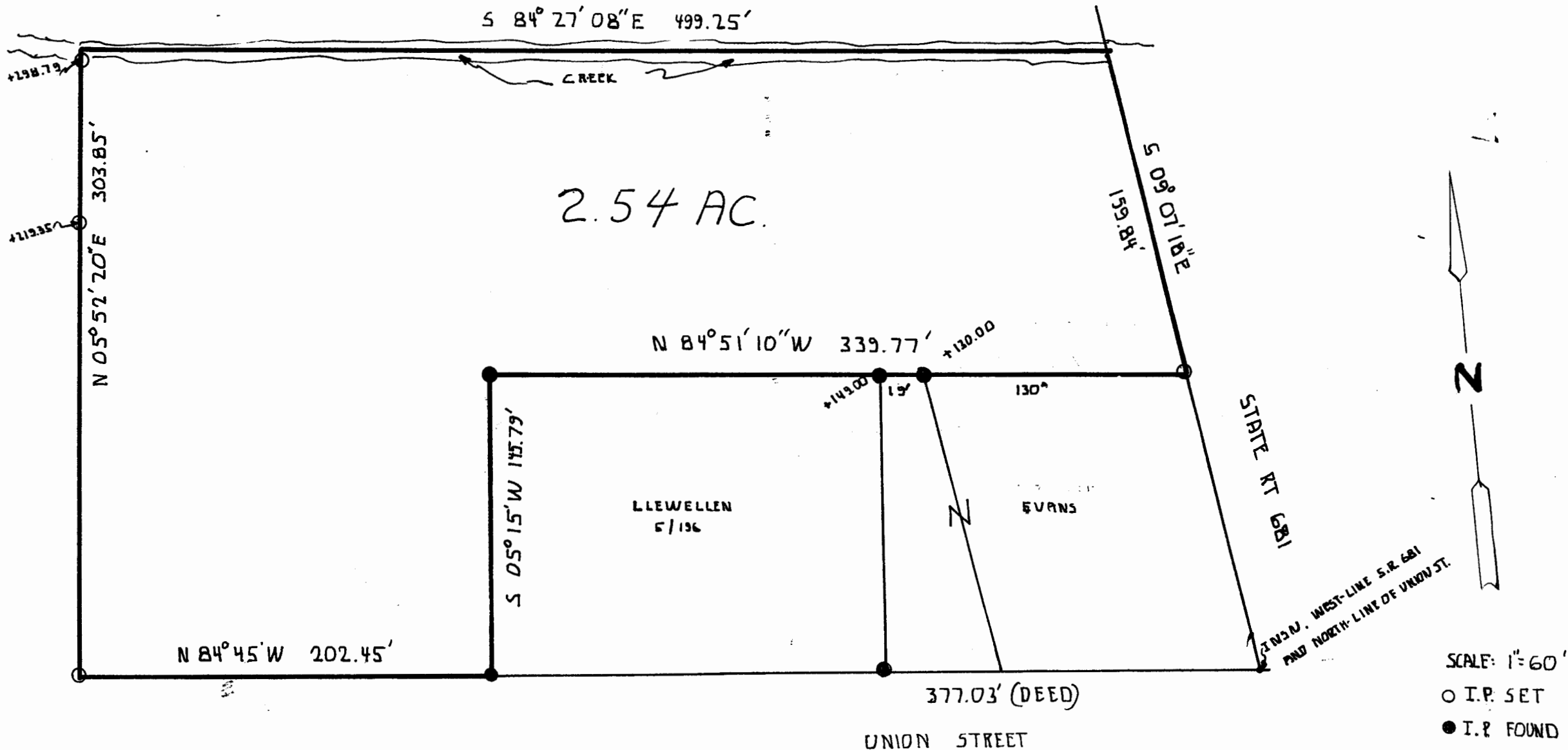
Beginning at an iron pin found at the South-west corner of a 0.6372 acre tract as recorded in Athens Official Records Book 5, Page 196, said pin bearing North 84 Degrees 45 Minutes West, 377.03 feet from the West-line of State Route 681 and the North-line of Union Street; thence, along the North line of Union Street, North 84 Degrees 45 Minutes West, 202.45 feet to an iron pin set; thence, North 05 Degrees 52 Minutes 20 Seconds East, 303.85 feet to a point in a creek, passing iron pins set at 219.35 feet and 298.79 feet; thence, South 84 Degrees 27 Minutes 08 Seconds East, 499.25 feet to a point in the West-line of State Route 681; thence, along said right of way, South 09 Degrees 07 Minutes 18 Seconds East, 159.84 feet to an iron pin set at the North-east corner of a 0.4337 acre tract; thence, along the North-line of said tract, North 84 Degrees 51 Minutes 10 Seconds West, 339.77 feet to an iron pin found at the North-west corner of the aforementioned 0.6372 acre tract; thence, South 05 Degrees 15 Minutes West, 145.79 feet to the point of beginning and containing 2.54 acres.

Subject to all easements and rights of way of record.

John M. Branner
John M. Branner P.S. 6805

Description checked for
Mathematical Accuracy,
ATHENS COUNTY
ENGINEER'S OFFICE

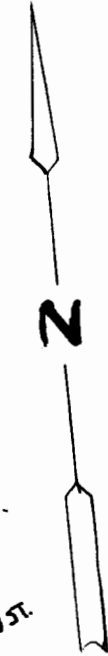
BY: *Bob Eichenberg*
DATE: *7-15-07*



2.54 AC.

LLEWELLEN
5/136

EVANS



SCALE: 1"=60'
 ○ I.P. SET
 ● I.P. FOUND

30

SURVEY OF A 2.54 ACRE TRACT
 IN SECTION 3, T.10, R.15, LEE TWP.,
 ATHENS COUNTY, OHIO
 JOHN M. BRANNER P.S. 6805 RT 3 ATHENS O.
 7/87