

Phone 740-753-1264
Fax 740-753-1264

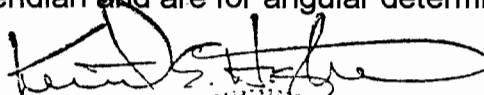
Description of a 21.492 Acre Tract

Situated in Fraction 2, Section 9, Lee Township, Athens County, State of Ohio and being a part of a 42.00 acre tract as described in Volume 266, Page 775 of the Official Records of Athens County and being more particularly described as follows;

BEGINNING at a stone found at the southeast corner of said 42.00 acre tract which bears North 0°02'52"West, 12.87 chains (deed) from the southeast corner of Fraction 2,
THENCE along the south line of said 42.00 acre tract South 89°17'26"West, 1370.14 feet to an iron pin set,
THENCE along the west line of said 42.00 acre tract North 0°45'06"West, 1124.77 feet to a point in the center of Cr-14 (passing a stone found at 217.80 feet and an iron pin set at 1097.24 feet,
THENCE along the center of said road the following nine courses,
South 69°09'01"East, 77.98 feet to a point,
South 71°09'57"East, 149.96 feet to a point,
South 62°36'58"East, 172.13 feet to a point,
South 52°17'54"East, 703.37 feet to a point,
South 51°18'46"East, 130.53 feet to a point,
South 45°20'51"East, 157.74 feet to a point,
South 41°44'59"East, 148.68 feet to a point,
South 44°47'25"East, 129.09 feet to a point,
South 52°50'54"East, 70.92 feet to a railroad spike set on the east line of said 42.00 acre tract and at the center of CR-14
THENCE leaving said road South 0°02'52"East, 84.41 feet to the place of beginning (passing an iron pin set at 31.72 feet) and containing 21.492 acres.

Subject to all Easements and Rights of Way of Record

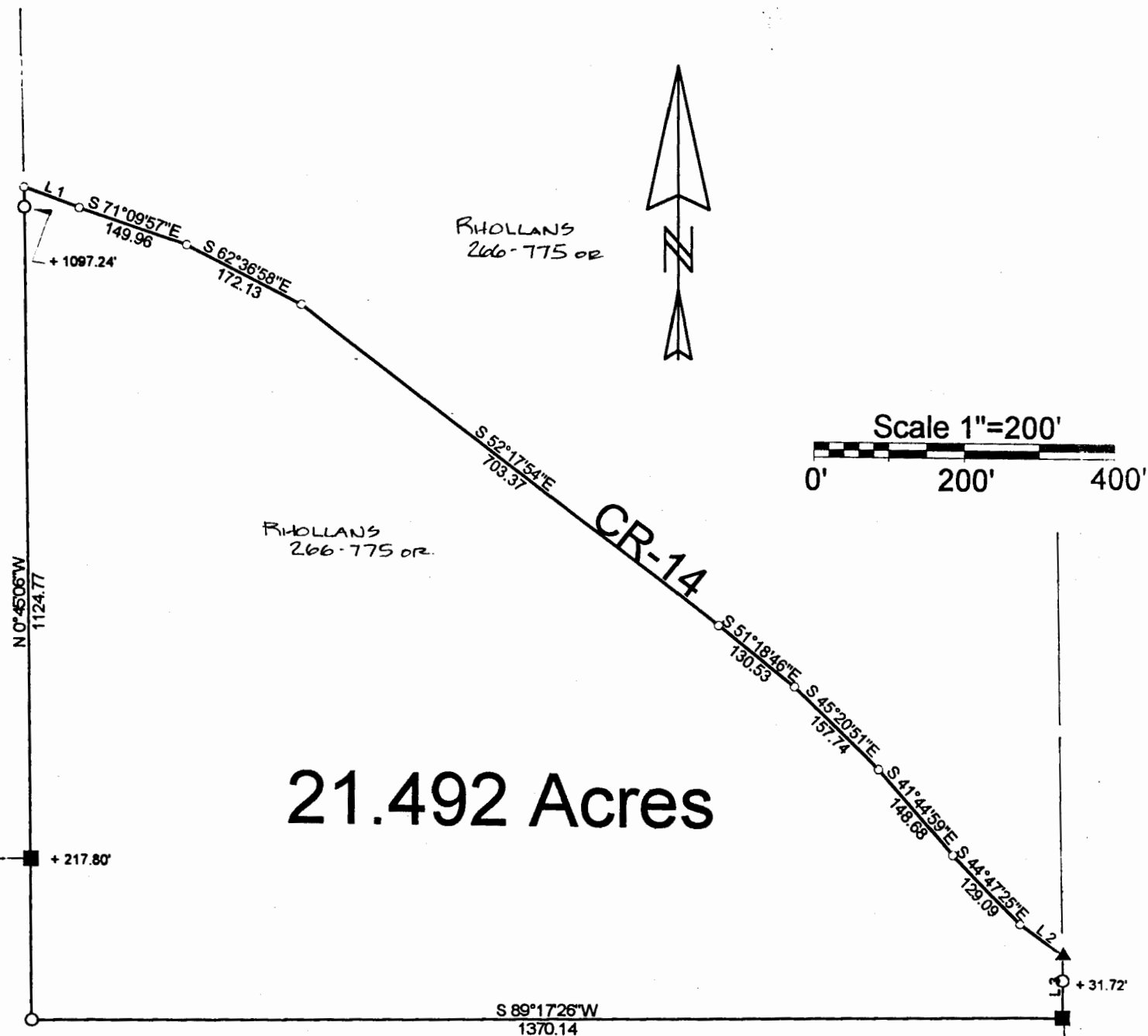
Bearings used are to an assumed meridian and are for angular determination only


Kenneth E. Highland, S-7581

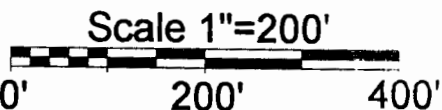
Description checked for
Mathematical Accuracy
ATHENS COUNTY
ENGINEER'S OFFICE
BY: S. Blause
DATE: 7-14-99



31



21.492 Acres



C.LINE
71-976 or 2

- = Iron Pin Set
- ▲ = Railroad Spike Set
- = Stone Found
- = Point

Line	Bearing	Distance
1	S 69° 09' 01" E	77.98
2	S 52° 50' 54" E	70.92
3	S 0° 02' 52" E	84.41

Description checked for
Mathematical Accuracy
ATHENS COUNTY
ENGINEER'S OFFICE
BY: S. Blausen
DATE: 7-14-99

PLAT OF SURVEY OF A 21.492 Ac. Tract

SURVEYED FOR ROBERT RHOLLANS

SUBDIVISION —

TOWNSHIP LEE SECTION 9 TOWN 10 RANGE 15

CORPORATION — COUNTY ATHENS STATE OHIO

SCALE 1" = 200' DATE JULY 1999

Kenneth E. Highland
80 Fayette St.
Nelsonville, Ohio 45764
740-753-1264

Kenneth E. Highland S-7581

