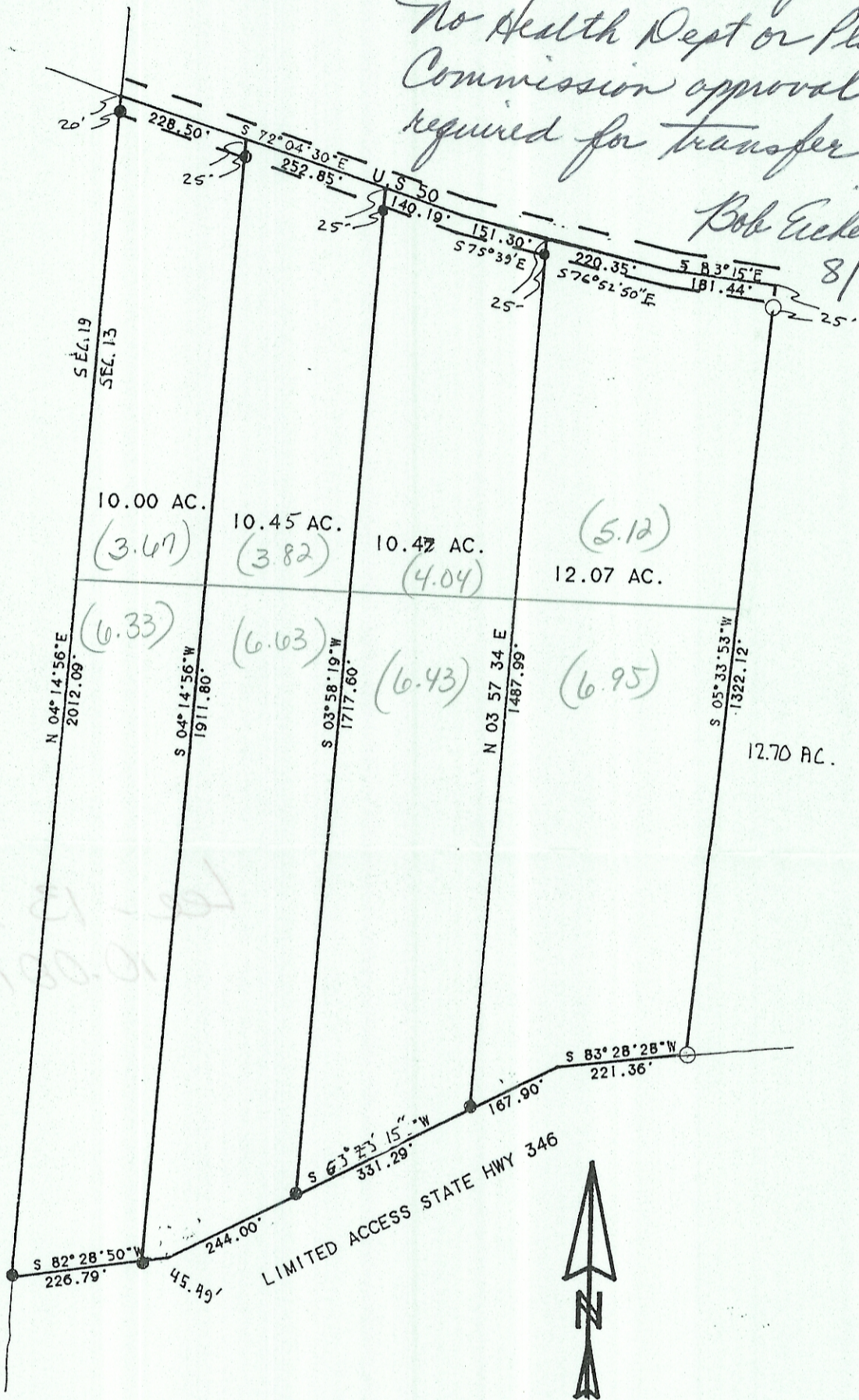


Lots are greater than five
 acres with road frontage.
 No Health Dept or Planning
 Commission approval
 required for transfer.

Bob Eckenberg
 8/10/93



SURVEY OF FOUR TRACTS IN
 SECTION 13, T.10, R.15,
 LEE TOWNSHIP, ATHENS CO. O.
 SURVEYED JULY 1993

John M. Branner
 JOHN M. BRANNER P.S. 6805
 12500 N. PEACH RIDGE ROAD
 ATHENS, OHIO 592-5778

SCALE 1 INCH = 200 FEET
 ● - IRON PIN SET
 ○ - IRON PIN FOUND

