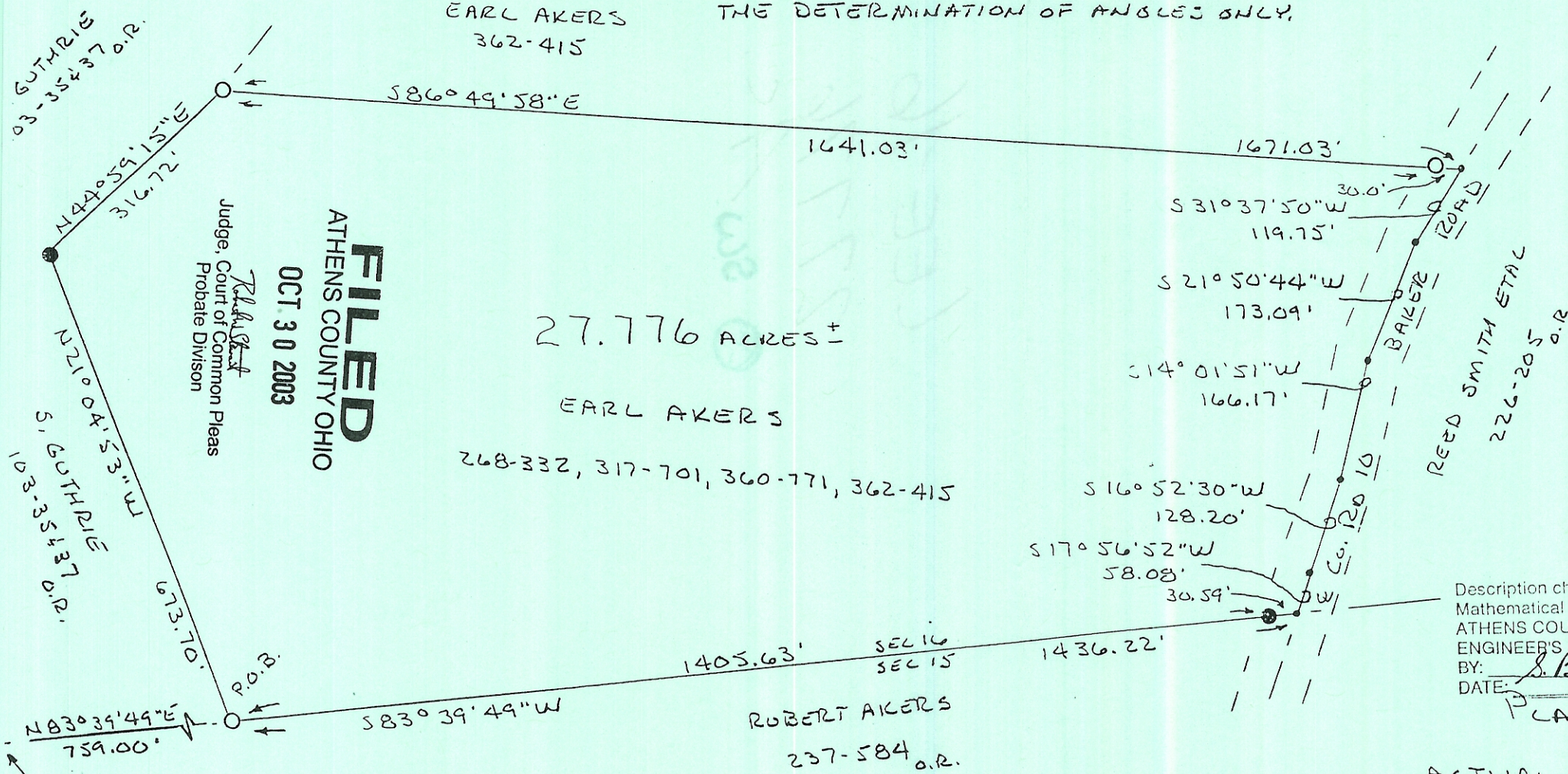


BEING A PART OF SECTION 16, TOWNSHIP-10-NORTH,  
 RANGE-15-WEST, LEE TOWNSHIP, ATHENS COUNTY, STATE OF OHIO.

NOTE: BEARINGS ARE ASSUMED AND ARE FOR THE DETERMINATION OF ANGLES ONLY.

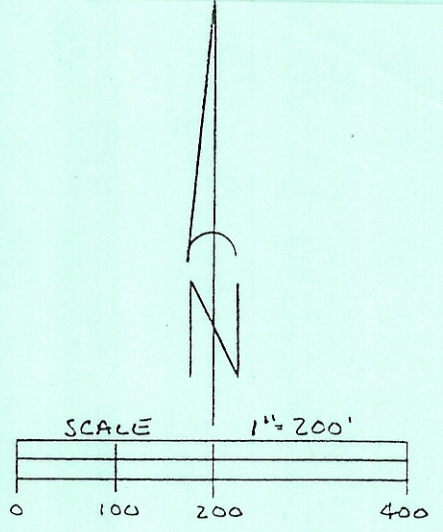


**FILED**  
 ATHENS COUNTY OHIO  
 OCT 30 2003  
 Judge, Court of Common Pleas  
 Probate Division

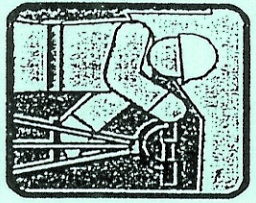
27.776 ACRES ±

EARL AKERS  
 268-332, 317-701, 360-771, 362-415

ROBERT AKERS  
 237-584 o.r.



C. Thomas Smith & Associates  
 P.O. Box 393  
 Racine, Ohio 45771  
 740-949-2524



Description checked for Mathematical Accuracy  
 ATHENS COUNTY ENGINEER'S OFFICE  
 BY: S. Blausen  
 DATE: 4-25-02

PLAT PREPARED FROM AN  
 ACTUAL SURVEY MADE ON THE  
 18<sup>TH</sup> DAY OF APRIL, 2002 BY,

*C. Thomas Smith*

OHIO PROFESSIONAL SURVEYOR  
 No. 6844

REFERENCES  
 CURRENT TAX PLATS  
 PREVIOUS SURVEYS  
 DEEDS: AS NOTED

LEGEND  
 ○ 3/8" x 30" IRON PIN W/ID CAP  
 "CTS-6844" SET  
 ● - EXISTING IRON PIN  
 • - POINT

ASSUMED SW COR  
 SEC. 16, T-10, R-15