

Description checked for

Mathematical Accuracy

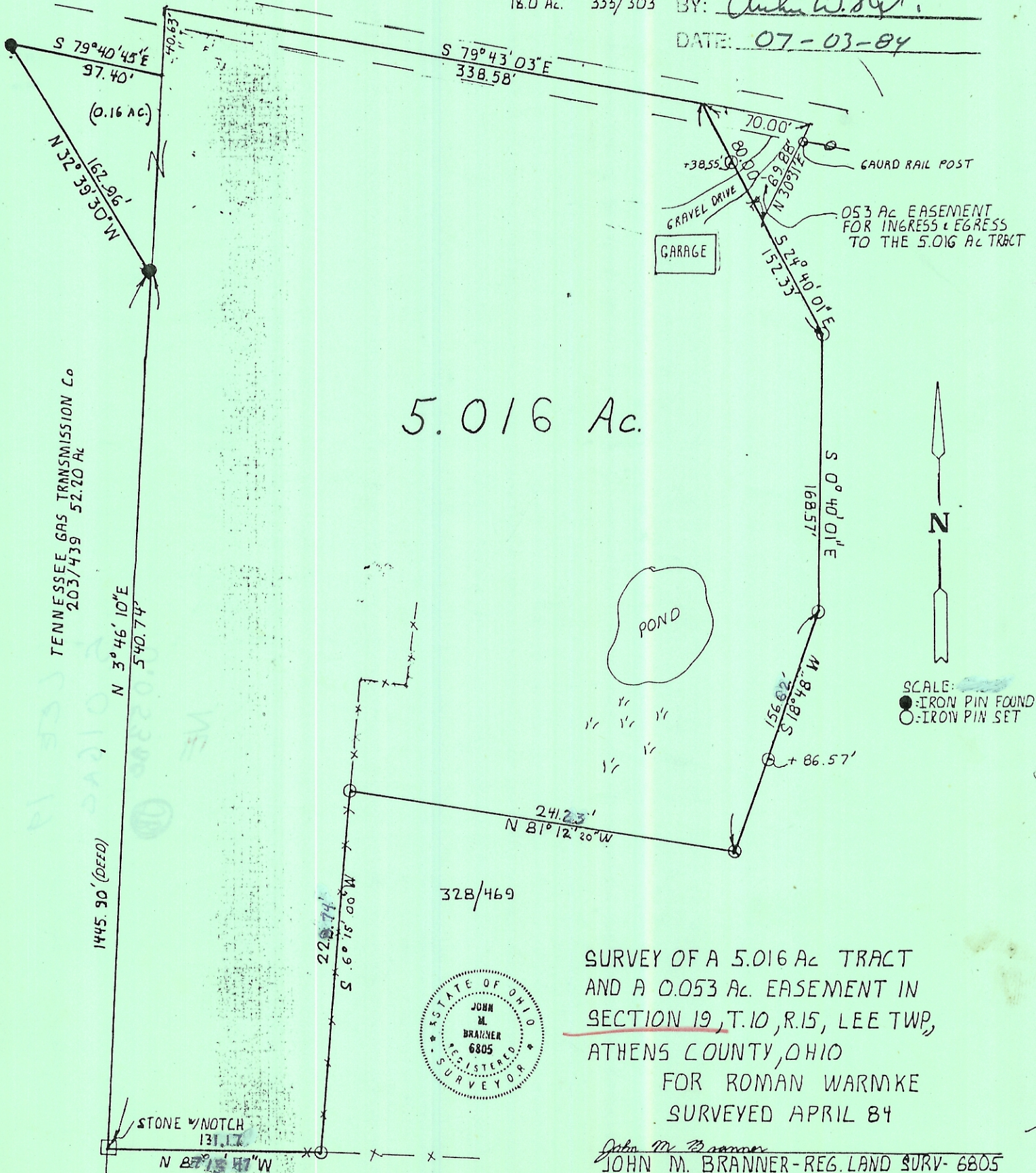
ATHENS COUNTY

ENGINEER'S OFFICE

VERNON C. & LEAH M. CRABTREE  
18.0 Ac. 333/303

BY: *John M. Branner*

DATE: 07-03-84



5.016 Ac.

TENNESSEE GAS TRANSMISSION Co  
203/439 52.20 AC

328/469



SURVEY OF A 5.016 AC TRACT  
AND A 0.053 AC. EASEMENT IN  
SECTION 19, T.10, R.15, LEE TWP,  
ATHENS COUNTY, OHIO  
FOR ROMAN WARMKE  
SURVEYED APRIL 84

*John M. Branner*  
JOHN M. BRANNER-REG. LAND SURV- 6805  
Rt. 3 - ATHENS, O. - 614-592-5778

SE COR 05  
NW 1/4 05  
SECTION 19

BARRY & JANE  
ARBAUGH  
280/557  
43.03 AC.