

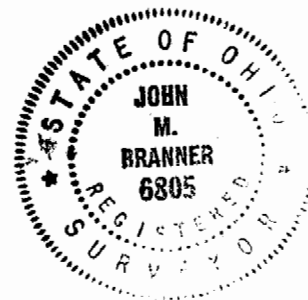
DESCRIPTION OF A 11.716 ACRE TRACT

Situated in Section 24, T.10, R.15, Lee Township, Athens County, Ohio and being more particularly described as follows:

Beginning at the North-east corner of Section 24, thence, along County Road 81, South 0 degrees 40 minutes 28 seconds East, a distance of 512.06 feet to a railroad spike set; thence, leaving said road, South 79 degrees 24 minutes 17 seconds West, a distance of 676.77 feet to an iron pin set; thence North 39 degrees 36 minutes 43 seconds West, a distance of 533.08 feet to an iron pin set; thence North 3 degrees 41 minutes 53 seconds West, a distance of 190.09 feet to an iron pin set on the North-line of Section 24; thence, along said line North 87 degrees 57 minutes 24 seconds East, a distance of 1011.99 feet to the POINT OF BEGINNING; said described tract containing 11.716 acres.

Subject to all easements and rights of way of record.

The above description is based on a field survey completed May 1995 by John M. Branner P.S. 6805



Description checked for  
Mathematical Accuracy  
ATHENS COUNTY  
ENGINEER'S OFFICE  
BY: Brenda King  
DATE: 5-23-95

Lee Twp # 24

29

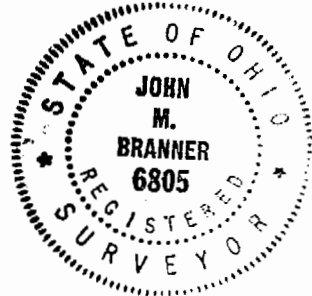
DESCRIPTION OF A 12.138 ACRE TRACT

Situated in Section 24, T.10, R.15, Lee Township, Athens County, Ohio and being more particularly described as follows:

Commencing at the North-east corner on Section 24, thence, along the North-line of said section North 87 Degrees 57 Minutes 24 Seconds East, 1011.99 feet to an iron pin set, said pin being THE POINT OF BEGINNING;  
thence, South 3 degrees 41 minutes 53 seconds East, a distance of 190.09 feet to an iron pin set;  
thence South 39 degrees 36 minutes 43 seconds East, a distance of 533.08 feet to an iron pin set;  
thence, South 61 degrees 36 minutes 54 seconds West, a distance of 452.93 feet to an existing pin on the East-line of a 5.04 acre tract;  
thence, along said tract, North 50 degrees 49 minutes 22 seconds West, a distance of 209.23 feet to an existing pin;  
thence South 58 degrees 02 minutes 08 seconds West, a distance of 449.49 feet to a point in State Route 681, passing an existing pin at 432.19 feet;  
thence, along said road, North 39 degrees 40 minutes 17 seconds West, a distance of 374.44 feet;  
thence North 33 degrees 56 minutes 55 seconds West, a distance of 59.67 feet;  
thence, leaving said road, North 55 degrees 54 minutes 00 seconds East, a distance of 1041.25 feet (passing an iron pin set at 16.10 feet) to the POINT OF BEGINNING; said described tract containing 12.138 acres.

Subject to all easements and rights of way of record.

The above description is based on a field survey completed May 1995 by John M. Branner P.S. 6805



Description checked for  
Mathematical Accuracy  
ATHENS COUNTY  
ENGINEER'S OFFICE  
BY: S. Blause  
DATE: 5-23-95

31  
LEE #24

DESCRIPTION OF A 5.02 ACRE TRACT

Situated in Section 24, T.10, R.15, Lee Township, Athens County, Ohio and being more particularly described as follows:

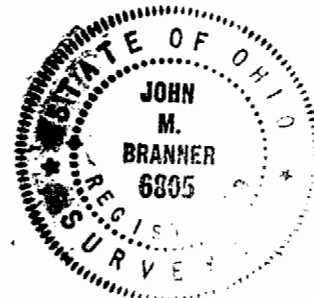
Commencing at the North-east corner of Section 24, thence, along County Road 81, South 0 degrees 40 minutes 28 seconds East, a distance of 512.06 feet to a railroad spike set and being the point of beginning for the tract of land herein described:

thence, South 1 degrees 56 minutes 11 seconds West, a distance of 225.63 ;  
thence South 10 degrees 54 minutes 37 seconds West, a distance of 180.93 feet;  
thence, leaving said road, South 62 degrees 51 minutes 28 seconds West, a distance of 232.73 feet to an iron pin set;  
thence North 59 degrees 09 minutes 30 seconds West, a distance of 376.35 feet to an iron pin set;  
thence North 25 degrees 52 minutes 51 seconds West, a distance of 213.36 feet to an iron pin set;  
thence North 79 degrees 24 minutes 17 seconds East, a distance of 676.77 feet to the POINT OF BEGINNING; said described tract containing 5.020 acres.

Subject to all easements and rights of way of record.

The above description is based on a field survey completed May 1995 by John M. Branner P.S. 6805

Description checked for  
Mathematical Accuracy  
ATHENS COUNTY  
ENGINEER'S OFFICE  
BY: Brenda King  
DATE: 5-23-95



33  
LEE#24

DESCRIPTION OF 8.586 ACRE TRACT

Situated in Section 24, T.10, R.14, Lee Township, Athens County, Ohio and being more particularly described as follows:

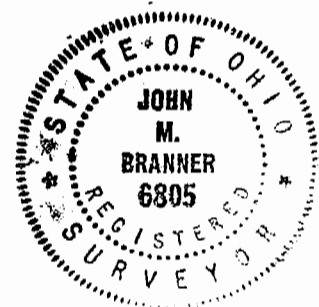
Commencing at the North-east corner of Section 24, thence, along County Road 81, South 0 degrees 40 minutes 28 seconds East, a distance of 512.06 feet to a railroad spike set; thence, leaving said road, South 79 degrees 24 minutes 17 seconds West, a distance of 676.77 feet to an iron pin set at the POINT OF BEGINNING;

thence South 25 degrees 52 minutes 51 seconds East, a distance of 213.36 feet to an iron pin set;  
thence South 59 degrees 09 minutes 30 seconds East, a distance of 376.35 feet to an iron pin set;  
thence South 62 degrees 51 minutes 28 seconds West, a distance of 1110.79 feet to a point in State Route 681, passing an iron pin set at 1085.79 feet;  
thence, along said road, North 25 degrees 31 minutes 01 second West, a distance of 223.29 feet;  
thence, leaving said road and along the South-line of a 5.04 acre tract, North 54 degrees 40 minutes 17 seconds East, a distance of 568.32 feet, passing an existing iron pin at 16.57 feet;  
thence, along the east-line of the 5.04 acre tract, North 52 degrees 57 minutes 58 seconds West, a distance of 242.70 feet to an existing iron pin;  
thence North 61 degrees 36 minutes 54 seconds East, a distance of 452.93 feet to the POINT OF BEGINNING; said described tract containing 8.586 acres.

Subject to all easements and rights of way of record.

The above description is based on a field survey completed May 1995 by John M. Branner P.S. 6805

Description checked for  
Mathematical Accuracy  
ATHENS COUNTY  
ENGINEER'S OFFICE  
BY: Aranda King  
DATE: 5-23-95



37

LEE # 24

DESCRIPTION OF A 7.14 ACRE TRACT

Situated in Section 24, T.10, R.15, Lee Township, Athens County, Ohio and being more particularly described as follows:

Commencing at the North-east corner of Section 24, thence, South 87 Degrees 57 Minutes 24 Seconds West, 1011.99 feet to the POINT OF BEGINNING;

thence South 55 degrees 54 minutes 00 seconds West, a distance of 1041.25 feet to a point in State Route 681, passing an iron pin set at 1025.15 feet;

thence, along said road, North 33 degrees 56 minutes 55 seconds West, a distance of 155.38 feet;

thence North 19 degrees 07 minutes 45 seconds West, a distance of 440.18 feet;

thence, leaving said road North 87 degrees 57 minutes 25 seconds East, a distance of 1093.93 feet (passing an iron pin set at 45.0 feet) to the POINT OF BEGINNING; said described tract containing 7.140 acres.

Subject to all easements and rights of way of record.

The above description is based on a field survey completed May 1995 by John M. Branner P.S. 6805

Description checked for  
Mathematical Accuracy  
ATHENS COUNTY  
ENGINEER'S OFFICE  
BY: Brenda King  
DATE: 5-23-95

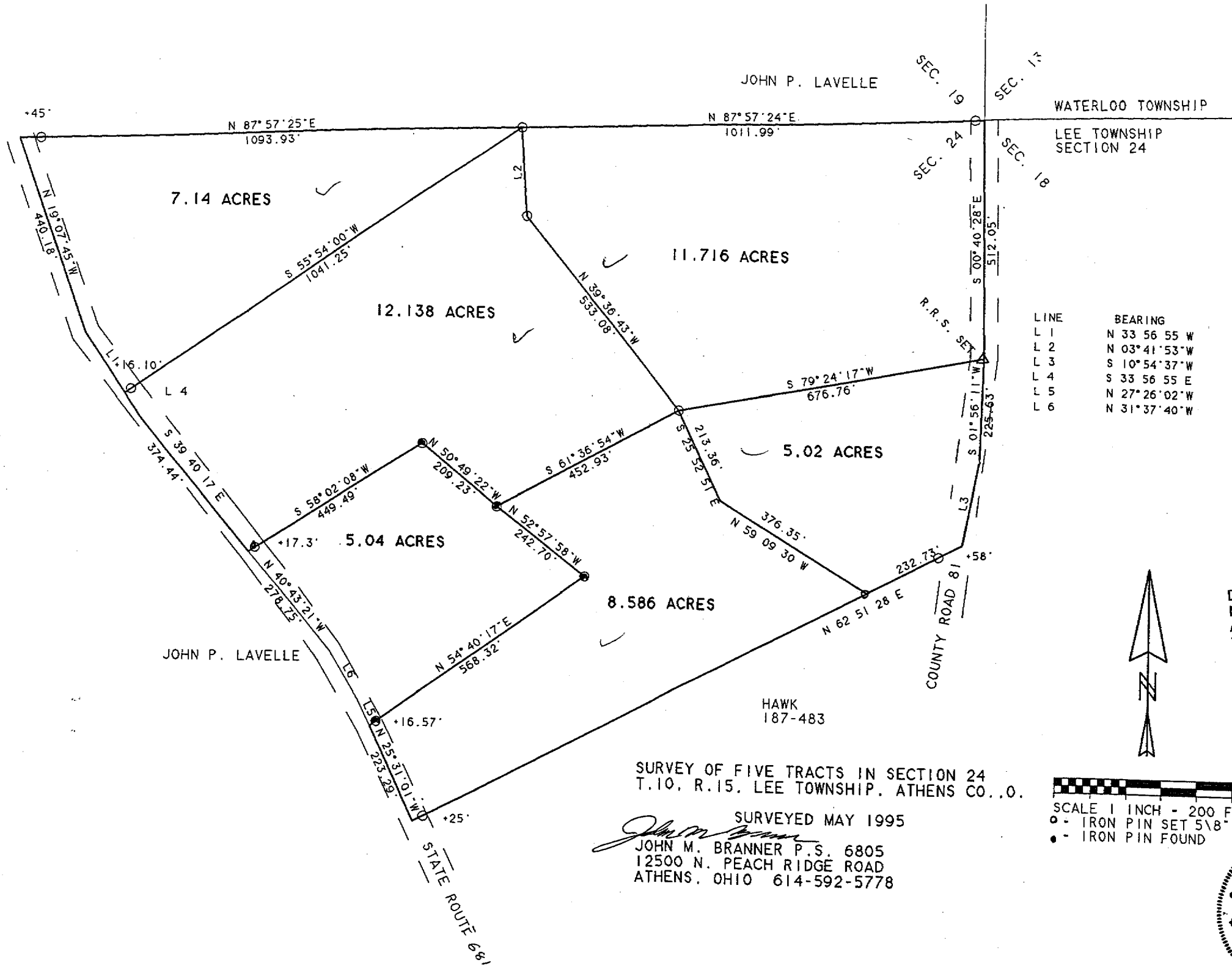


25

LEE # 327

LEE #24.

39



LINE	BEARING	DISTANCE
L 1	N 33° 56' 55" W	155.38'
L 2	N 03° 41' 53" W	190.09'
L 3	S 10° 54' 37" W	180.93'
L 4	S 33° 56' 55" E	59.67'
L 5	N 27° 26' 02" W	63.03'
L 6	N 31° 37' 40" W	119.59'

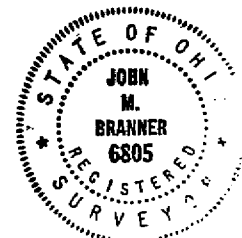
Description checked for  
 Mathematical Accuracy  
 ATHENS COUNTY  
 ENGINEER'S OFFICE  
 BY: S. Blause (all except 5.04)  
 DATE: 4-20-98

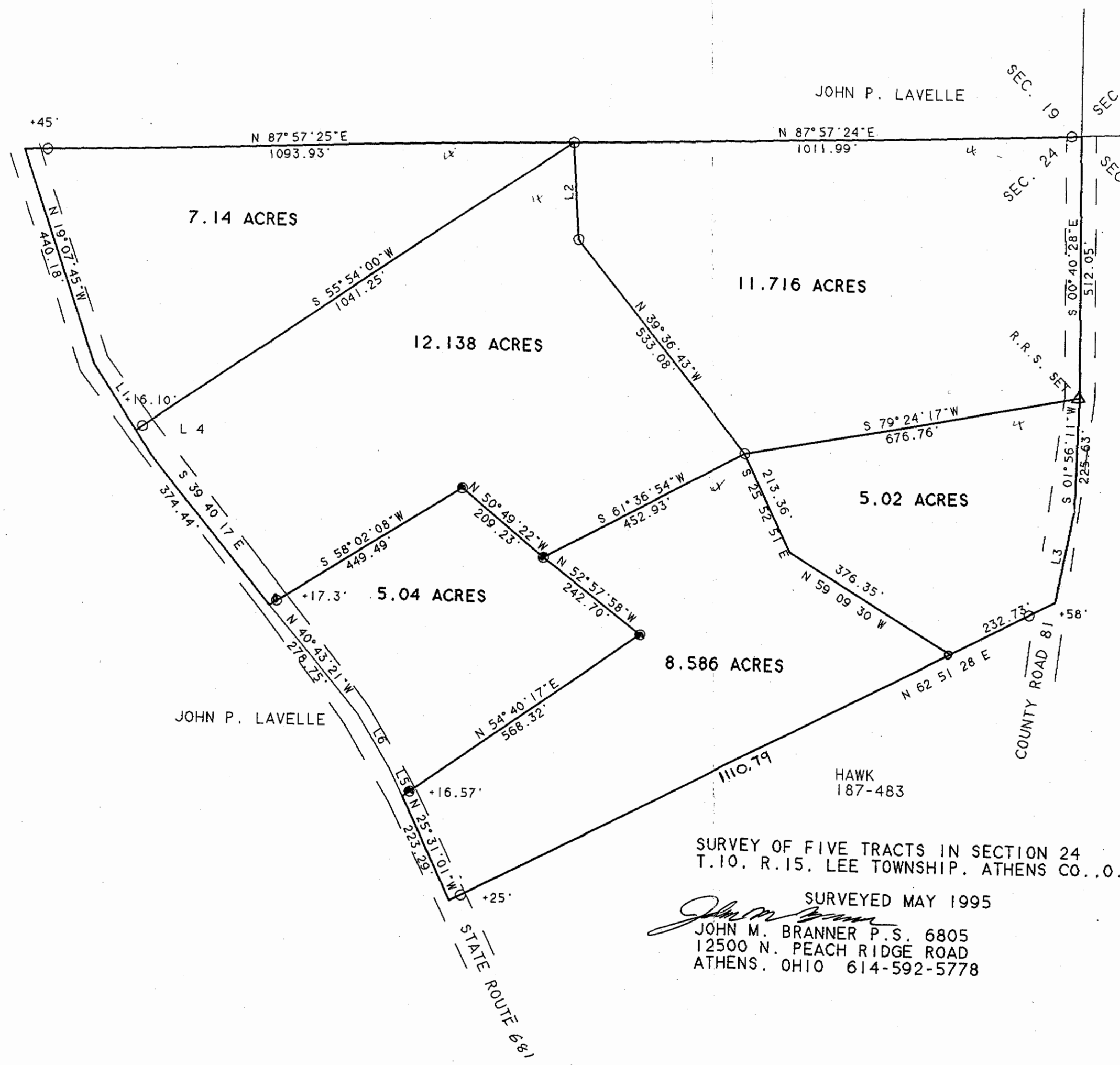


SCALE 1 INCH = 200 FEET  
 ○ - IRON PIN SET 5/8" REBAR  
 ● - IRON PIN FOUND

SURVEY OF FIVE TRACTS IN SECTION 24  
 T.10, R.15, LEE TOWNSHIP, ATHENS CO., O.

SURVEYED MAY 1995  
 JOHN M. BRANNER P.S. 6805  
 12500 N. PEACH RIDGE ROAD  
 ATHENS, OHIO 614-592-5778





LINE	BEARING	DISTANCE
L 1	N 33° 56' 55" W	155.38
L 2	N 03° 41' 53" W	190.09'
L 3	S 10° 54' 37" W	180.93'
L 4	S 33° 56' 55" E	59.67
L 5	N 27° 26' 02" W	63.03'
L 6	N 31° 37' 40" W	119.59'

Description checked for  
 Mathematical Accuracy  
 ATHENS COUNTY  
 ENGINEER'S OFFICE  
 BY: S. Blaus (all except 5.04)  
 DATE: 4-20-98



SCALE 1 INCH = 200 FEET  
 ○ - IRON PIN SET 5/8" REBAR  
 ● - IRON PIN FOUND

SURVEY OF FIVE TRACTS IN SECTION 24  
 T.10, R.15, LEE TOWNSHIP, ATHENS CO., O.

SURVEYED MAY 1995  
 JOHN M. BRANNER P.S. 6805  
 12500 N. PEACH RIDGE ROAD  
 ATHENS, OHIO 614-592-5778

