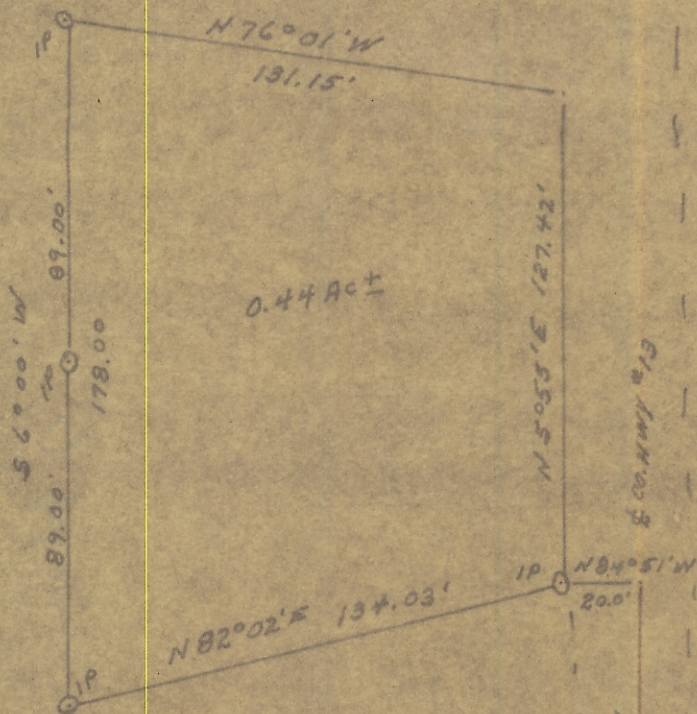
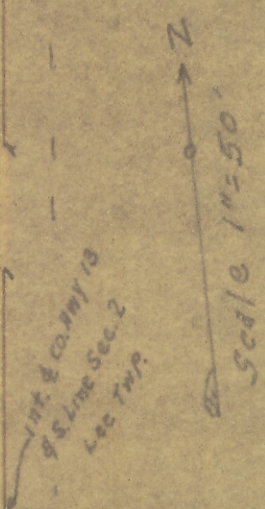


Sec 2  
Lee

ALBANY  
76  
Sec. 2  
0.44 Acre



PLAT  
 of a part of Section  
 2 Lee Twp. Athens Co  
 in the village of ALBANY  
 surveyed for Ray Cuckler  
 6-19-67  
 by Joe L. Galvin  
 Reg. Sur. 1684.



Int. & Co. July 13  
 9 S. Line Sec. 2  
 Lee Twp.