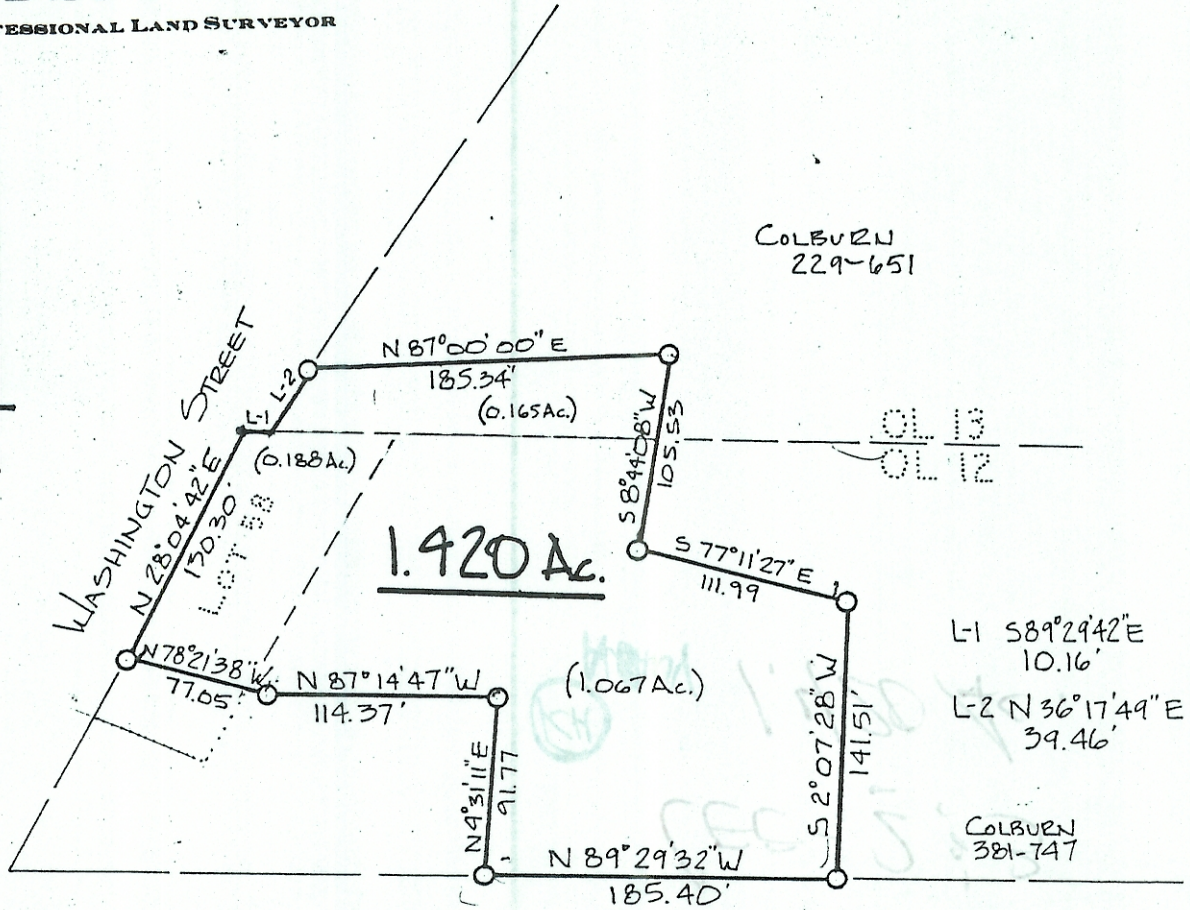
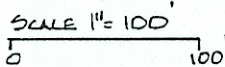


HIGHLAND SURVEYING
 REGISTERED PROFESSIONAL LAND SURVEYOR



O = IRON PIN SET



Description checked for
 Mathematical Accuracy
 ATHENS COUNTY
 ENGINEER'S OFFICE
 BY: S. Blause
 DATE: 10-10-96

PLAT of SURVEY OF 1.420 AC. TRACT
 SURVEYED for WILEY COLBURN
 SUBDIVISION _____
 TOWNSHIP LEE SECTION 2 & 3 TOWN 10 RANGE 15
 CORPORATION ALBANY COUNTY ATHENS STATE OHIO
 SCALE 1" = 100' DATE OCT 1994



KENNETH E. HIGHLAND
 80 FAYETTE STREET
 NELSONVILLE, OHIO 45764
 614-753-1264

Kenneth E. Highland
 Kenneth E. Highland S-7581