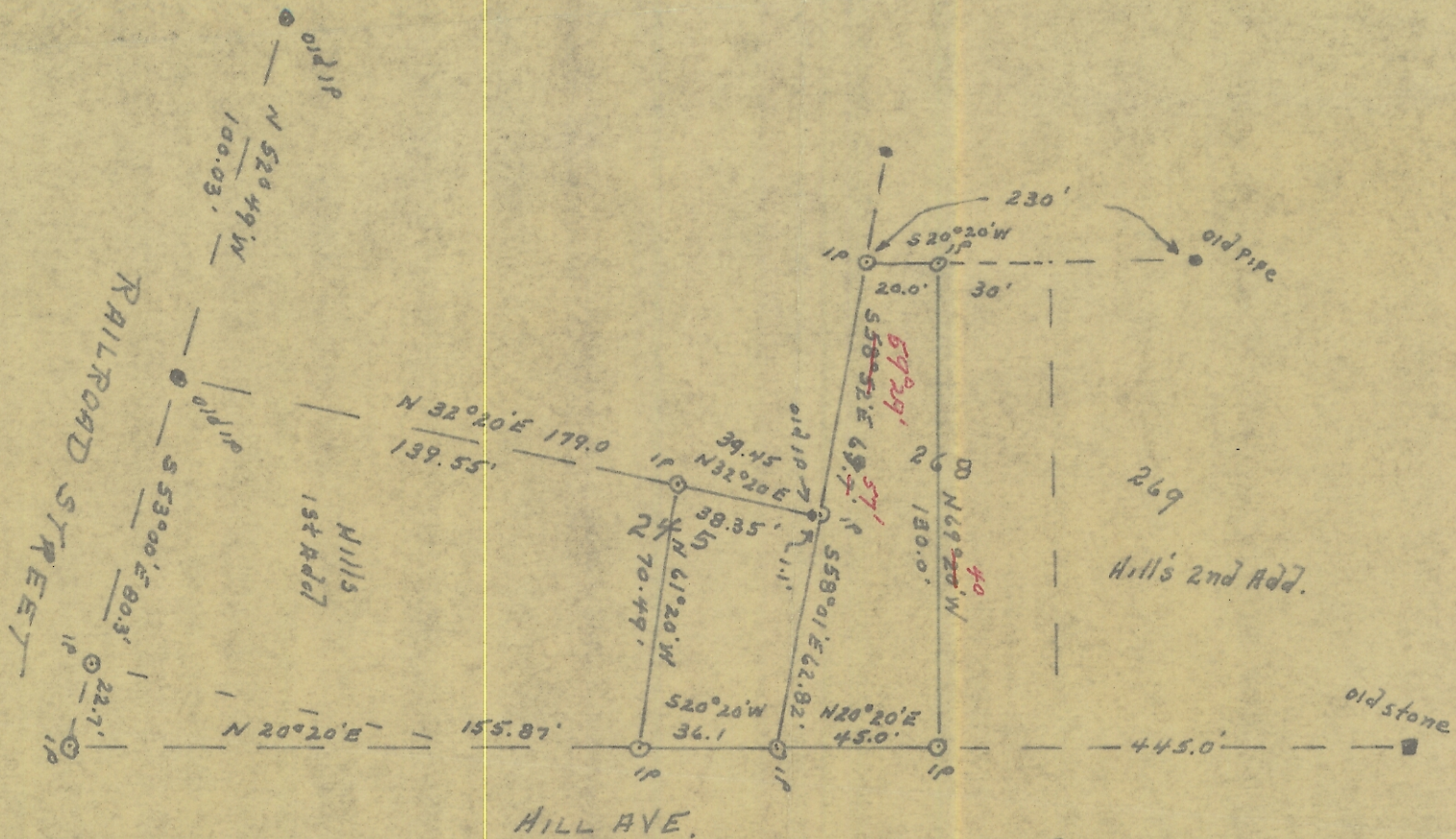


Sec. 2

JG  
ALBANY  
LOTS  
245  
268



PLAT

Showing Part of Hill's 1st Addition "Part of Inlot 245"  
and Part of Hill's 2nd Addition to the Village of ALBANY Ohio  
"part of Inlot 268" in Section 2, Lee Township Athens Co. O.  
Surveyed for Gerald Chessor Nov. 9 1967  
by J. D. Galvin  
Reg. Sur 1684.

