

BRANNER SURVEYING

MEMBER-PROFESSIONAL LAND SURVEYORS OF OHIO

12500 N. PEACH RIDGE ROAD
ATHENS, OHIO 45701

JOHN M. BRANNER
Registered Land Surveyor

TELEPHONE
(614) 592-5778

DESCRIPTION OF A 5.29 ACRE TRACT

Commencing at the North-west corner of the South-west Quarter of Section 11, thence, South 51 Degrees 08 Minutes 23 Seconds East, 1490.26 feet to a point in County Road 42; thence, with said road, South 72 Degrees 41 Minutes 29 Seconds West, 361.14 feet to a point; thence, South 71 Degrees West, 329.27 feet to a rail road spike at the intersection of County Road 42 with County Road 75, said spike being the POINT OF BEGINNING;

thence South 78 degrees 20 minutes 59 seconds West, a distance of 320.41 feet to a spike set;
thence South 52 degrees 26 minutes 01 second West, a distance of 216.04 feet to a spike set;
thence South 74 degrees 39 minutes 11 seconds West, a distance of 77.22 feet to a spike set;
thence North 83 degrees 55 minutes 39 seconds West, a distance of 101.72 feet to a spike set;
thence, leaving County Road 42 and along an existing fence-line, North 6 degrees 13 minutes 46 seconds East, a distance of 693.37 feet to a spike set in County Road 75;
thence South 50 degrees 44 minutes 20 seconds East, a distance of 167.02 feet to a spike set;
thence South 55 degrees 05 minutes 41 seconds East, a distance of 224.91 feet to a spike set;
thence South 53 degrees 38 minutes 51 seconds East, a distance of 136.81 feet to a spike set;
thence South 48 degrees 00 minutes 47 seconds East, a distance of 108.95 feet to a spike set;
thence South 40 degrees 19 minutes 58 seconds East, a distance of 124.37 feet to the POINT OF BEGINNING; said described tract containing 5.292 acres.

Subject to all easements and rights of way of record.

John M. Branner P.S. 6805

Description checked for
Mathematical Accuracy
ATHENS COUNTY
ENGINEER'S OFFICE
BY: J. Blausen
DATE: 6-23-93

10

6

Book # 11

SURVEY OF A 5.29 ACRE TRACT
IN SECTION 11, T.4.R13. LOD1
TOWNSHIP, ATHENS CO. O.
SURVEYED JUNE 1993

JOHN M. BRANNER P.S. 6805
12500 N. PEACH RIDGE RD.
ATHENS, OHIO 592-5778

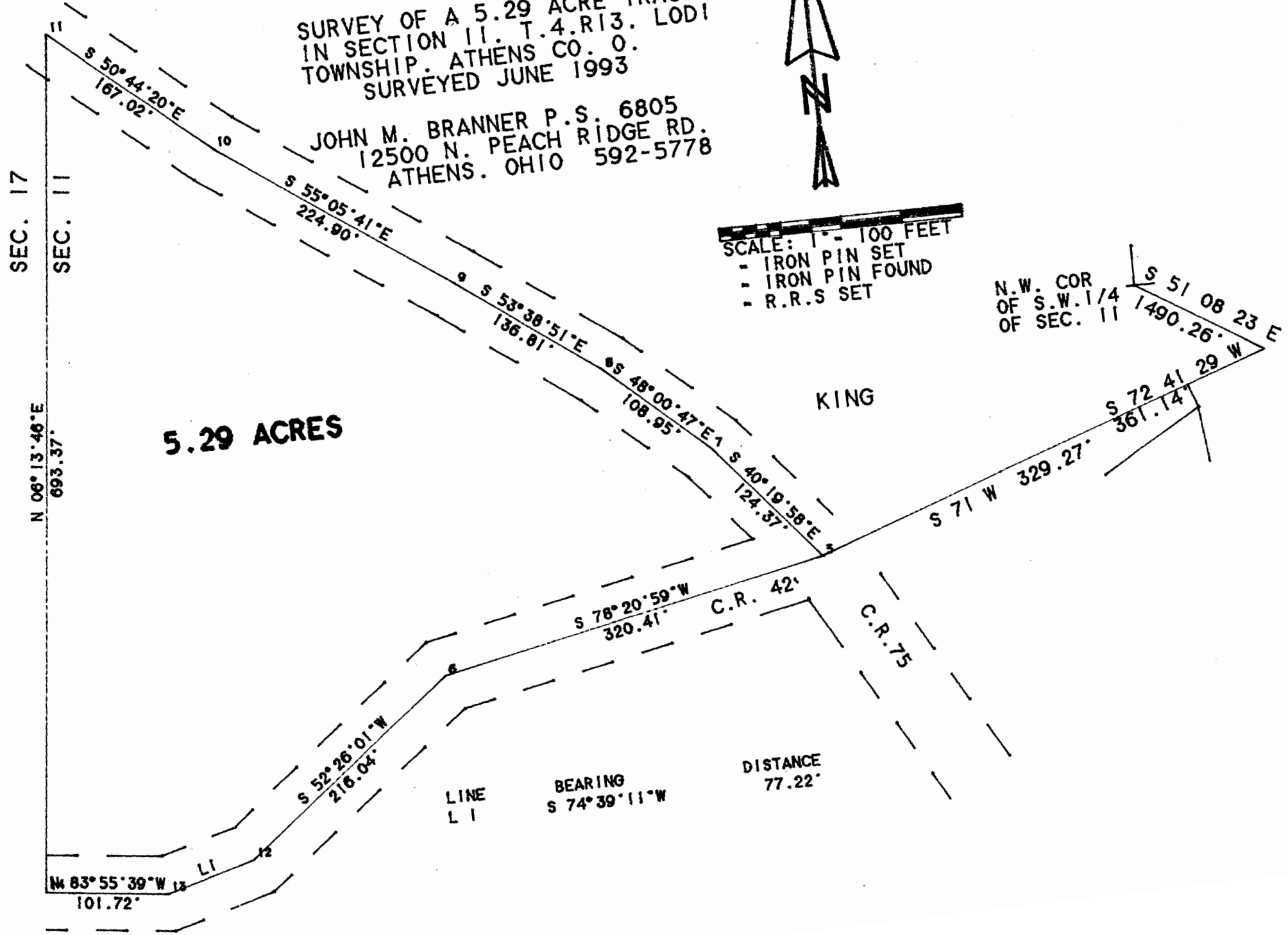


SCALE: 1" = 100 FEET
- IRON PIN SET
- IRON PIN FOUND
- R.R.S SET

N.W. COR
OF S.W. 1/4
OF SEC. 11

S 51 08 23 E
1490.26'

S 72 41 29 W
361.14'



(G)