

# BRANNER SURVEYING

MEMBER-PROFESSIONAL LAND SURVEYORS OF OHIO

12500 N. PEACH RIDGE ROAD  
ATHENS, OHIO 45701

JOHN M. BRANNER  
Registered Land Surveyor

TELEPHONE  
(614) 592-5778

Situated in Sections 16 and 17 of T.4, R.13, Lodi Township, Athens County, Ohio and being more particularly described as follows:

Commencing at the South-west corner of the South-east corner of Section 17, thence, North 00 Degrees 18 Minutes 37 Seconds East, 31.50 feet to a point in County Road 42 and being the POINT OF BEGINNING;

thence, along said road, North 88 degrees 34 minutes 45 seconds East, a distance of 210.64 feet;

thence North 80 degrees 40 minutes 25 seconds East, a distance of 137.89 feet to a point at the intersection of County Road 42 with Township Road 80;

thence, along said road, South 16 degrees 45 minutes 15 seconds East, a distance of 112.56 feet;

thence South 8 degrees 19 minutes 39 seconds West, a distance of 106.00 feet;

thence South 24 degrees 01 minute 23 seconds West, a distance of 182.78 feet;

thence South 17 degrees 55 minutes 48 seconds West, a distance of 146.04 feet;

thence, leaving said center-line, South 75 degrees 40 minutes 34 seconds East, a distance of 14.62 feet to an iron pin set;

thence, along Grantor's east-line, South 21 degrees 44 minutes 10 seconds West, a distance of 412.50 feet to a point in Shade Creek, passing a fence post at 370 feet;

thence, along said creek North 24 degrees 23 minutes 44 seconds West, a distance of 267.84 feet;

thence North 41 degrees 03 minutes 13 seconds West, a distance of 215.29 feet ;

thence, along a branch of Shade Creek, North 37 degrees 24 minutes 39 seconds East, a distance of 43.14 feet;

thence North 3 degrees 56 minutes 06 seconds West, a distance of 92.96 feet;

thence North 24 degrees 42 minutes 09 seconds East, a distance of 218.20 feet;

thence North 10 degrees 42 minutes 44 seconds West, a distance of 149.68 feet to a point in County Road 42;

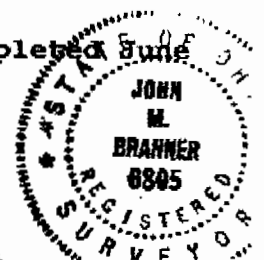
thence, along said road, South 89 degrees 15 minutes 56 seconds East, a distance of 63.07 feet to the POINT OF BEGINNING; said described tract containing 6.262 acres.

Subject to all easements and rights of way of record.

*John M. Branner*

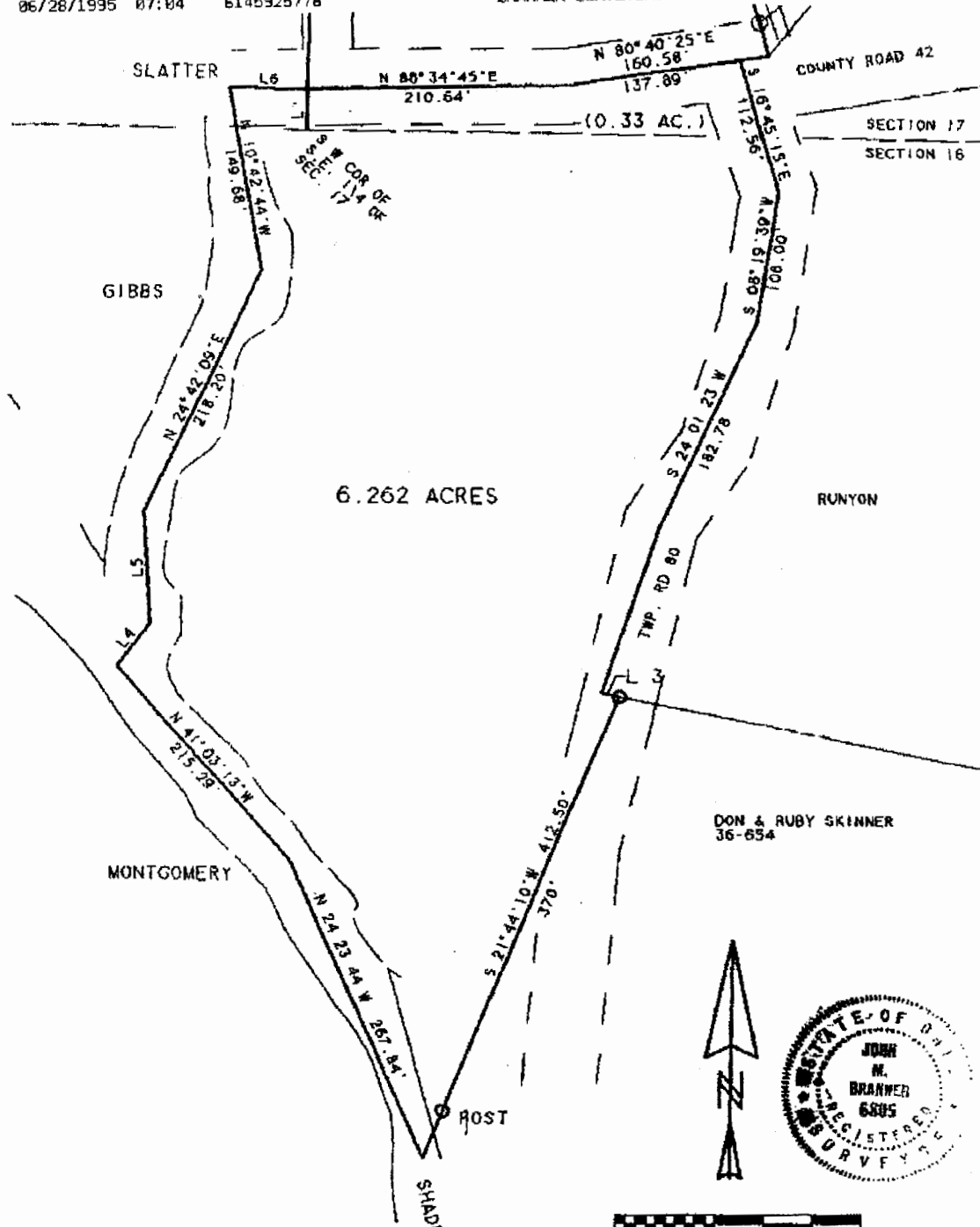
The above description is based on a field survey completed June 1995 by John M. Branner P.S. 6805

Description checked for  
Mathematical Accuracy  
ATHENS COUNTY  
ENGINEER'S OFFICE  
BY: Brenda King  
DATE: 6-28-95



18

*Lodi Twp # 16, 17*



LINE	BEARING	DISTANCE
L 1	N 00° 18' 37" E	31.50'
L 2	S 33° 27' 21" W	77.00'
L 3	N 75° 40' 34" E	14.62'
L 4	N 37° 24' 39" E	43.14'
L 5	N 03° 56' 06" W	92.96'
L 6	S 89° 15' 56" E	63.07'
L 7	S 79° 10' 31" E	31.25'
L 8	N 63° 55' 25" W	49.58'

SCALE 1 INCH = 100 FEET  
 - IRON PIN SET  
 - IRON PIN FOUND  
 ASSUMED BEARINGS

SURVEY OF A 6.26 ACRE TRACT  
 IN SECTIONS 16 AND 17 OF T.4  
 R.13. LODI TOWNSHIP, ATHENS CO., O.  
 SURVEYED JUNE 1995

JOHN M. BRANNER P.S. 6805  
 12500 N. PEACH RIDGE ROAD  
 ATHENS, OHIO 614-592-5778

