

# BRANNER SURVEYING

MEMBER-PROFESSIONAL LAND SURVEYORS OF OHIO

12500 N. PEACH RIDGE ROAD  
ATHENS, OHIO 45701

JOHN M. BRANNER

Registered Land Surveyor

DESCRIPTION OF A 16.27 ACRE TRACT

TELEPHONE

(614) 592-5778

Situated in Section 16 and 17 of T.4, R.13, Lodi Township, Athens County, Ohio and being more particularly described as follows:

Commencing at the South-west corner of the South-east 1\4 of section 17, thence, North 00 Degrees 18 Minutes 37 Seconds East, 31.50 feet to a point in County Road 42; thence, along said road, North 88 Degrees 34 Minutes 45 Seconds East, 210.64 feet to a point; thence, North 80 Degrees 40 Minutes 25 Seconds East, 137.89 feet to a P.K. nail at the intersection of County Road 42 with Township Road 80, said P.K. nail being the POINT OF BEGINNING;

thence, along County Road 42, North 80 degrees 40 minutes 14 seconds East, a distance of 22.70 feet;

thence North 60 degrees 39 minutes 43 seconds East, a distance of 219.27 feet;

thence North 58 degrees 21 minutes 31 seconds East, a distance of 140.50 feet;

thence North 47 degrees 33 minutes 41 seconds East, a distance of 599.13 feet;

thence North 54 degrees 01 minute 47 seconds East, a distance of 174.73 feet;

thence North 46 degrees 08 minutes 00 seconds East, a distance of 242.54 feet;

thence, leaving said road, South 0 degrees 56 minutes 56 seconds East, a distance of 891.53 feet to an iron pin set at a corner tree, passing an iron pin set at 30.00 feet;

thence South 89 degrees 41 minutes 16 seconds West, a distance of 689.97 feet to an iron pin set;

thence South 0 degrees 00 minutes 04 seconds West, a distance of 588.62 feet to a fence corner;

thence North 78 degrees 35 minutes 35 seconds West, a distance of 514.67 feet to an iron pin in a drive;

thence North 75 degrees 42 minutes 28 seconds West, a distance of 14.66 feet to a point in Township Road 80;

thence, along said road, North 17 degrees 56 minutes 46 seconds East, a distance of 146.05 feet;

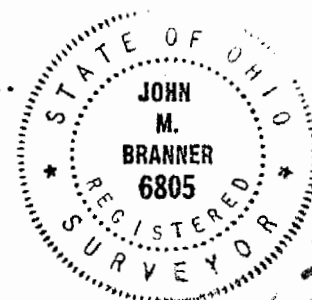
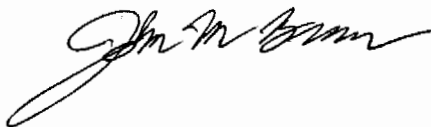
thence North 24 degrees 01 minute 32 seconds East, a distance of 182.79 feet;

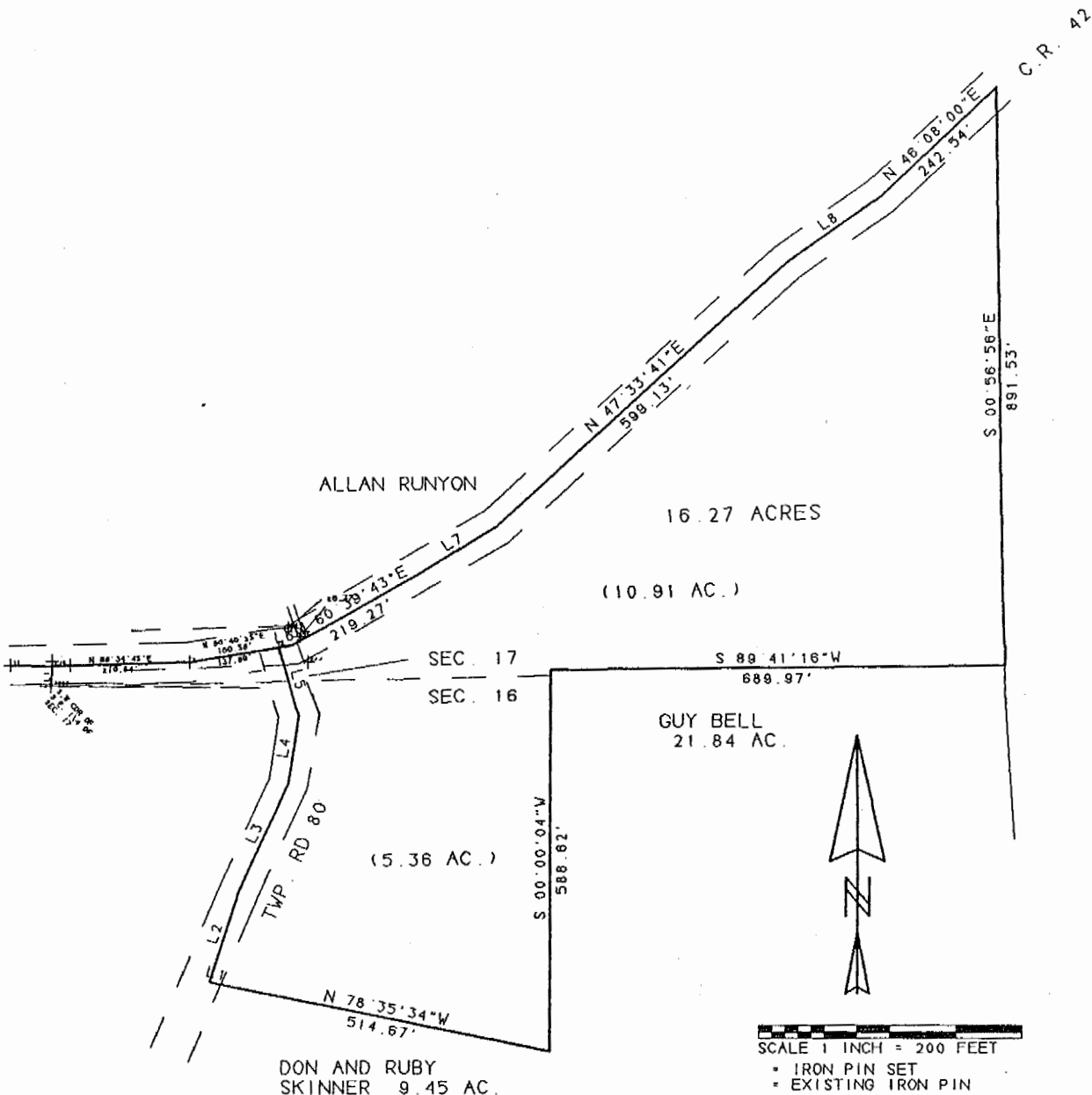
thence North 8 degrees 26 minutes 58 seconds East, a distance of 106.03 feet;

thence North 16 degrees 51 minutes 59 seconds West, a distance of 112.64 feet to the POINT OF BEGINNING; said described tract containing 16.271 acres.

Subject to all easements and rights of way of record.

Description checked for  
Mathematical Accuracy  
ATHENS COUNTY  
ENGINEER'S OFFICE  
BY: E. Blawie  
DATE: 9-6-95





LINE	BEARING	DISTANCE
L 1	N 75° 42' 28" W	14.66'
L 2	N 17° 58' 46" E	146.05'
L 3	N 24° 01' 32" E	182.79'
L 4	N 08° 26' 58" E	106.03'
L 5	N 16° 51' 59" W	112.64'
L 6	N 80° 40' 14" E	22.70'
L 7	N 58° 21' 31" E	140.50'
L 8	N 54° 01' 47" E	174.73'

SURVEY OF A 16.27 ACRE TRACT  
 IN SECTIONS 16 AND 17 OF  
 T. 4, R. 13, LODI TOWNSHIP,  
 ATHENS CO., O.  
 SURVEYED AUGUST 1995

JOHN M. BRANNER P.S. 6805  
 12500 N. PEACH RIDGE ROAD  
 ATHENS, OHIO 592-5778

LOD #16

40