

BRANNER SURVEYING

MEMBER-PROFESSIONAL LAND SURVEYORS OF OHIO

12500 N. PEACH RIDGE ROAD
ATHENS, OHIO 45701

JOHN M. BRANNER
Registered Land Surveyor

TELEPHONE
(614) 592-5778

DESCRIPTION OF A 13.70 ACRE TRACT

Situated in Section 25, T.4, R.13, Lodi Township, Athens County, Ohio and being a part of a tract of land as described in Volume 44, Page 229 of the Official Records of Athens County and being more particularly described as follows:

Commencing at the North-east corner of the South-east Quarter of Section 25, thence, South 25 chains to the North-east corner of a 4.55 acre tract; thence South 3 degrees 42 minutes 00 seconds West, a distance of 356.79 feet to a rail road spike and being the point of beginning for the tract of land herein described;;

thence South 3 degrees 42 minutes 00 seconds West, a distance of 786.23 feet to a point where a 24 inch white oak bears South 28 Degrees 45 Minutes East, 24.8 feet;

thence North 86 degrees 45 minutes 50 seconds West, a distance of 698.83 feet to an iron pin set;

thence North 4 degrees 08 minutes 39 seconds East, a distance of 1091.52 feet to a in County Road 89, passing an iron pins set at 1056.90 feet;

thence, along said road, South 46 degrees 04 minutes 38 seconds East, a distance of 260.86 feet;

thence South 48 degrees 23 minutes 52 seconds East, a distance of 155.95 feet;

thence,, South 59 degrees 45 minutes 49 seconds East, a distance of 140.59 feet;

thence South 80 degrees 44 minutes 00 seconds East, a distance of 107.98 feet;

thence North 77 degrees 59 minutes 12 seconds East, a distance of 140.10 feet to the POINT OF BEGINNING; said described tract containing 13.70 acres.

Subject to all easements and rights of way of record.

John M. Branner
John M. Branner P.S. 6805



Description checked for
Mathematical Accuracy
ATHENS COUNTY
ENGINEER'S OFFICE
BY: S. Blausen
DATE: 10-18-94

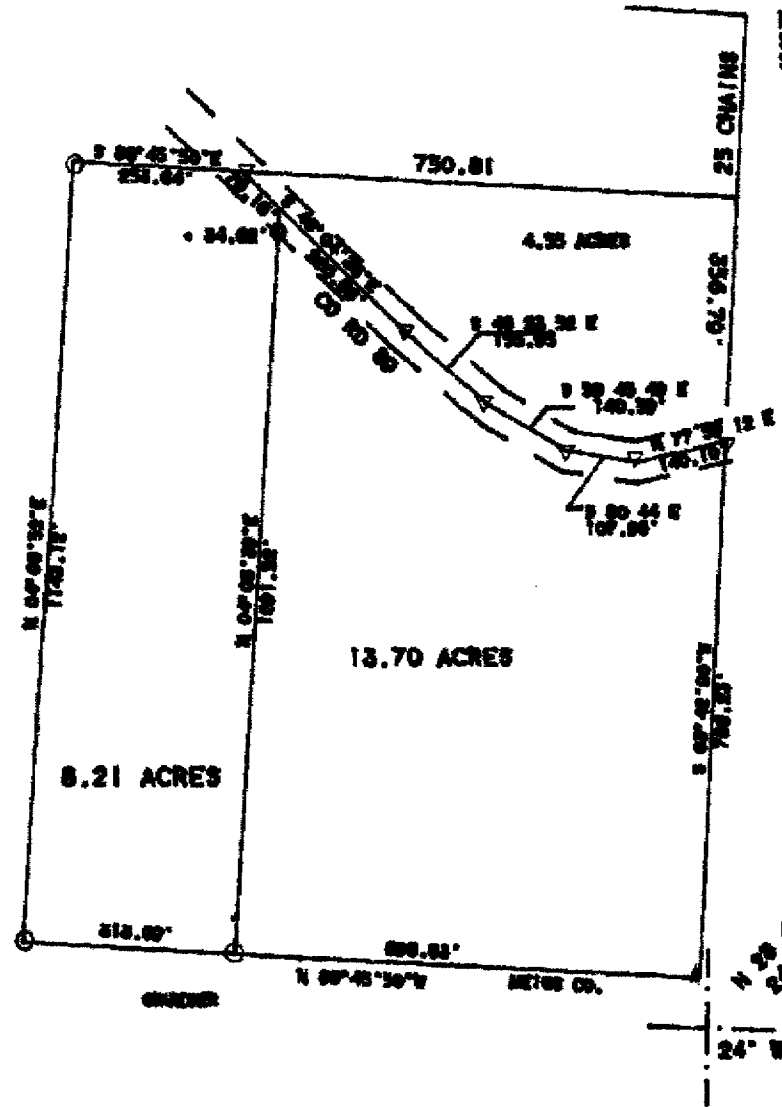
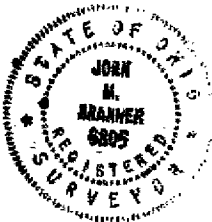
77
Lod #25




 SCALE 1 INCH = 100 FEET
 ○ = IRON PIN SET
 ● = IRON PIN FOUND
 ▽ = EXISTING SPIKE

SURVEY OF TWO LOTS
 IN SECTION 25, T.4.
 R.13, LODI TOWNSHIP
 ATHENS COUNTY, OHIO
 SURVEYED AUGUST 1994


 JOHN M. BRANNER P.S. 6805
 112500 N. PEACH RIDGE ROAD
 ATHENS, OHIO 502-5778



112.00' S 89°45'30" W
 107.20' S 89°45'30" W
 108.10' S 89°45'30" W

24" WHITE OAK