

BRANNER SURVEYING
MEMBER-PROFESSIONAL LAND SURVEYORS OF OHIO
12500 PEACH RIDGE ROAD
ATHENS, OHIO 45701

JOHN M. BRANNER
Registered Land Surveyor

TELEPHONE
(614) 592-5778

DESCRIPTION OF A 4.55 ACRE TRACT

Situated in the South-east Quarter of Section 25, T.4, R.13, Lodi Township, Athens County, Ohio and being more particularly described as follows:

Beginning at an iron pin set in Grantor's North-east corner, said pin bearing South 03 Degrees 42 Minutes West, 1650 feet from the North-east Quarter of the South-east Quarter of Section 25; thence, along Grantor's North-line North 86 Degrees 45 Minutes 50 Seconds West, 750.81 feet to a railroad spike set in County Road 69; thence, along said road, South 46 Degrees 04 Minutes 38 Seconds East, 340.02 feet to a point; thence, South 48 Degrees 23 Minutes 52 Seconds East, 155.95 feet to a point; thence, South 59 Degrees 45 Minutes 49 Seconds East, 140.59 feet to a point; thence, South 80 Degrees 44 Minutes East, 107.98 feet to a point; thence, North 77 Degrees 59 Minutes 12 Seconds East, 140.10 feet to a railroad spike set in Grantor's East-line; thence, leaving road and along said line, North 03 Degrees 42 Minutes East, 356.79 feet to the point of beginning and containing 4.55 acres.

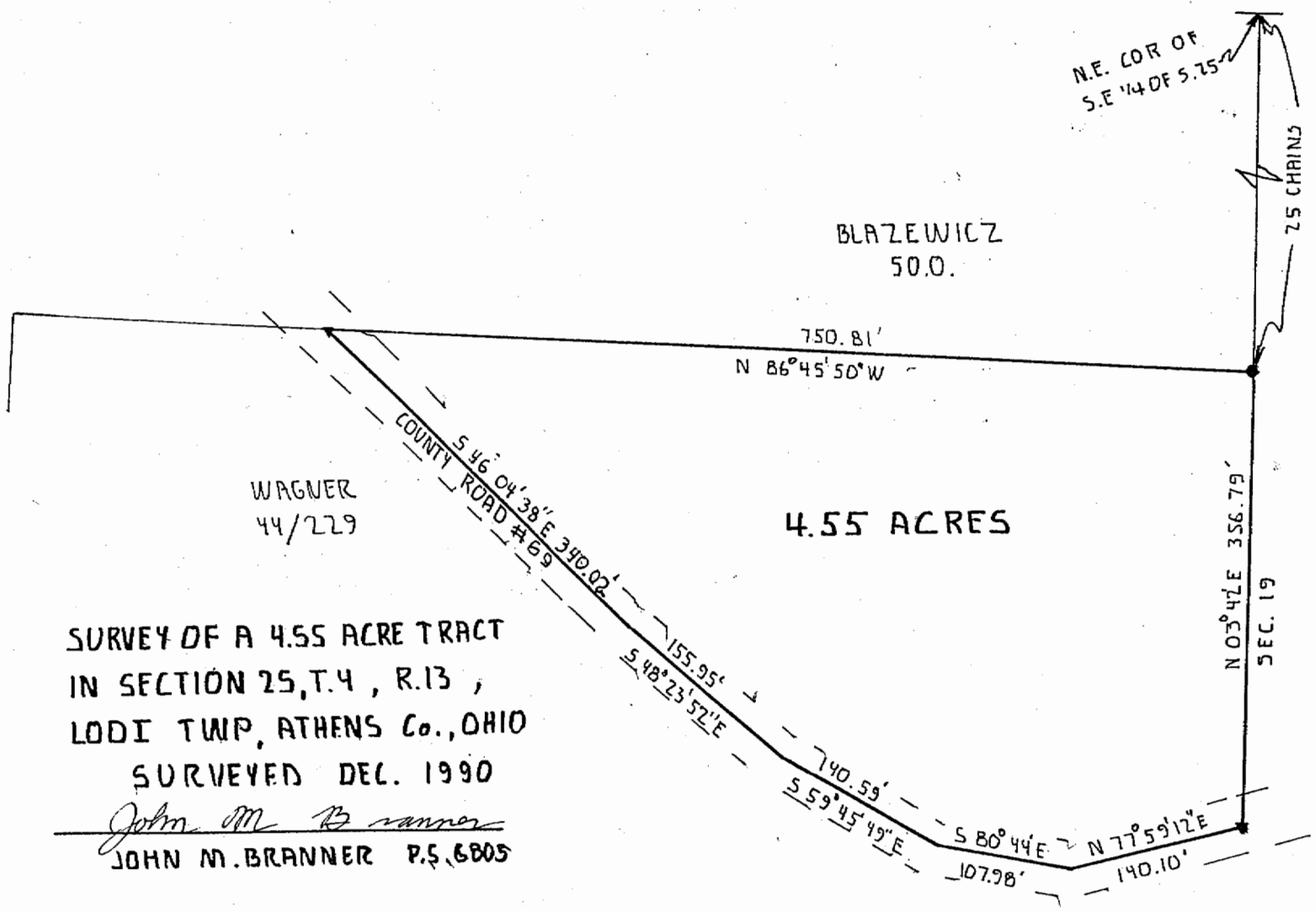
Subject to all easements and rights of way of record.

John M. Branner
John M. Branner P.S. 6805

Description checked for
Mathematical Accuracy
ATHENS COUNTY
ENGINEER'S OFFICE
BY: *John R. Ruckenberg*
DATE: 1-7-91



LOD # 25
3



WAGNER
44/229

BLAZEWICZ
50.0.

4.55 ACRES

SURVEY OF A 4.55 ACRE TRACT
IN SECTION 25, T.4, R.13,
LODI TWP, ATHENS Co., OHIO
SURVEYED DEC. 1990

John M Branner
JOHN M. BRANNER P.S. 6805

N.E. COR OF
S.E. 1/4 OF S. 75

75 CHAINS

N 03°41'E 356.79'
SEC. 19



SCALE: 1"=100'
● = I.P. SET
▼ = RR.S. SET



8