

BRANNER SURVEYING

MEMBER-PROFESSIONAL LAND SURVEYORS OF OHIO

12500 N. PEACH RIDGE ROAD
ATHENS, OHIO 45701

JOHN M. BRANNER
Registered Land Surveyor

TELEPHONE
(614) 592-5778

DESCRIPTION OF A 5.874 ACRE TRACT

Situated in Section 27, Fraction 24, T. 4, R. 13, Lodi Township, Athens County, Ohio and being more particularly described as follows:

Commencing at the South-east corner of Fraction 24, thence, North 6 degrees 33 minutes 00 seconds East, a distance of 283.14 feet to a point;
thence, North 83 degrees 26 minutes 50 seconds West, a distance of 1337.00 feet to a point;
thence, North 5 degrees 28 minutes 50 seconds West, a distance of 384.81 feet to an iron pin found, said point being the POINT OF BEGINNING;
thence, South 74 degrees 28 minutes 10 seconds West, a distance of 344.85 feet to a point in U.S. Highway 33, passing an iron pin set at 314.85 feet;
thence, following said Highway, North 21 degrees 02 minutes 29 seconds West, a distance of 414.23 feet to a point;
thence, North 15 degrees 00 minutes 02 seconds West, a distance of 277.22 feet to a point;
thence, leaving said Highway, North 73 degrees 34 minutes 25 seconds East, a distance of 379.48 feet to an iron pin set, passing an iron pin set at 34.39 feet;
thence, South 14 degrees 31 minutes 43 seconds East, a distance of 217.56 feet to an iron pin set;
thence, South 4 degrees 49 minutes 54 seconds East, a distance of 248.13 feet to an iron pin set;
thence, North 60 degrees 06 minutes 41 seconds East, a distance of 103.31 feet to an iron pin set;
thence, South 5 degrees 08 minutes 56 seconds East, a distance of 264.05 feet to the POINT OF BEGINNING and containing 5.874 acres.

Subject to all easements and rights of way of record.
All iron pin set are 5/8 inch x 30 inch long rebar.

The above description is based on a field survey completed March 1997 by John M. Branner P.S. 6805

Description checked for
Mathematical Accuracy
ATHENS COUNTY
ENGINEERING OFFICE
BY: B. Blaus
DATE: 3-5-97

John M. Branner

9

BRANNER SURVEYING

MEMBER-PROFESSIONAL LAND SURVEYORS OF OHIO

12500 N. PEACH RIDGE ROAD
ATHENS, OHIO 45701

JOHN M. BRANNER
Registered Land Surveyor

TELEPHONE
(614) 592-5778

DESCRIPTION OF A 0.138 ACRE TRACT FOR INGRESS AND EGRESS

Situated in Section 27, Fraction 24, T. 4, R. 13, Iodi Township, Athens County, Ohio and being more particularly described as follows:

Commencing at the South-east corner of Fraction 24;
thence, North 6 degrees 33 minutes 00 seconds East, a distance of 283.14 feet to a point;
thence, North 83 degrees 26 minutes 50 seconds West, a distance of 1337.00 feet to a point;
thence, North 5 degrees 28 minutes 50 seconds West, a distance of 384.81 feet to a point;
thence, North 5 degrees 08 minutes 56 seconds West, a distance of 264.05 feet to a point;
thence, South 60 degrees 06 minutes 41 seconds West, a distance of 103.31 feet to a point;
thence, North 4 degrees 49 minutes 54 seconds West, a distance of 248.13 feet to a point;
thence, North 14 degrees 31 minutes 43 seconds West, a distance of 73.03 feet to a point, said point being the POINT OF BEGINNING;
thence, South 28 degrees 15 minutes 39 seconds West, a distance of 45.38 feet to a point;
thence, South 71 degrees 27 minutes 36 seconds West, a distance of 58.71 feet to a point;
thence, South 77 degrees 01 minute 17 seconds West, a distance of 66.06 feet to a point;
thence, South 57 degrees 28 minutes 28 seconds West, a distance of 56.65 feet to a point;
thence, South 42 degrees 21 minutes 38 seconds West, a distance of 110.53 feet to a point;
thence, South 65 degrees 18 minutes 11 seconds West, a distance of 76.46 feet to a point in U.S. Highway 33;
thence, following said Highway, North 15 degrees 00 minutes 02 seconds West, a distance of 15.22 feet to a point;
thence, leaving said Highway, North 65 degrees 18 minutes 11 seconds East, a distance of 73.89 feet to a point;
thence, North 41 degrees 42 minutes 39 seconds East, a distance of 104.60 feet to a point;
thence, North 56 degrees 57 minutes 48 seconds East, a distance of 60.58 feet to a point;
thence, North 76 degrees 18 minutes 21 seconds East, a distance of 71.05 feet to a point;
thence, North 71 degrees 23 minutes 54 seconds East, a distance of 57.34 feet to a point;
thence, North 23 degrees 52 minutes 05 seconds East, a distance of 51.33 feet to a point;
thence, South 14 degrees 31 minutes 43 seconds East, a distance of 21.89 feet to the POINT OF BEGINNING and containing 0.138 acres.

The above description is based on a field survey completed March 1997 by John M. Branner P.S. 6805

John M. Branner

10

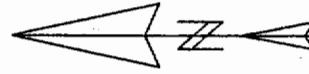
*S. Branner
3-5-97*

IVAN & GAYE
MARTIN 83 AC.

SOUTH-EAST
CORNER OF
FRACTION 24

N 06°33'00"E
4.29 CH.
DEED

N 83°26'50"W
1337.00
DEED

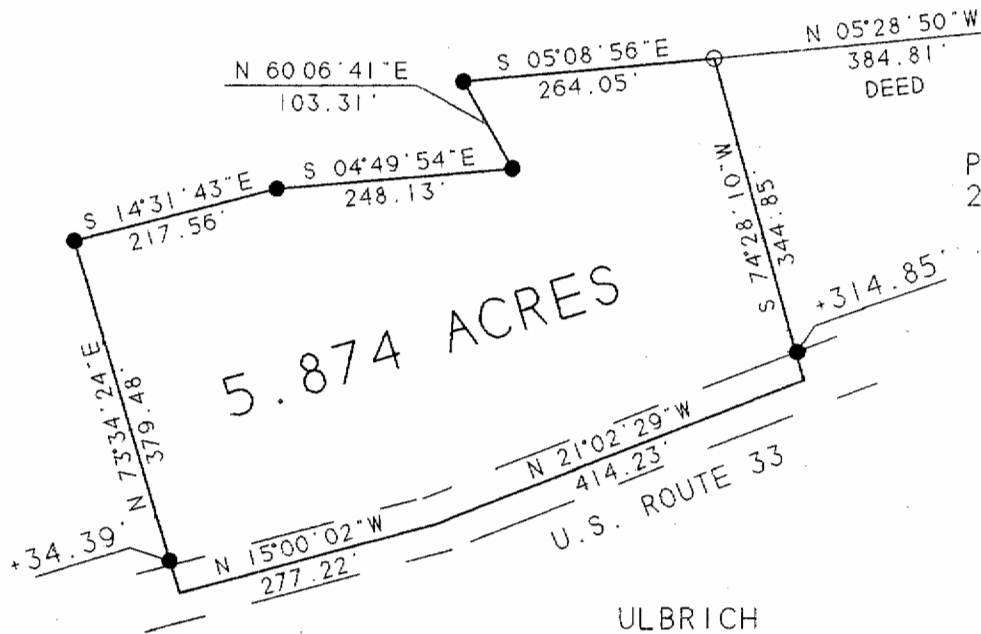


SCALE 1 INCH = 200 FEET

- - IRON PIN FOUND
- - IRON PIN SET

BEARINGS SHOWN HEREON
ARE BASED ON A PREVIOUS
SURVEY AND ARE USED
TO DENOTE ANGLES ONLY

PATTERSON
2.25 AC.



SURVEY OF A 5.874 ACRE TRACT
FRACTION 24, SEC. 27,
T.4. R.13. LODI TWP.
ATHENS COUNTY, OHIO
SURVEYED MARCH 1997

John M. Branner
JOHN M. BRANNER P.S. 6805
12500 N. PEACH RIDGE ROAD
ATHENS, OHIO 592-5778

Description checked for
Mathematical Accuracy
ATHENS COUNTY
ENGINEER'S OFFICE
BY: J. Blausen
DATE: 3-5-97

Survey of
John M. Branner
Athens County
Engineer's Office
L2 # 107