



# SOUTHEASTERN LAND SURVEYS

LEONARD F. SWOYER  
REGISTERED PROFESSIONAL LAND SURVEYOR

3428 Pleasant Hill Road  
Athens, Ohio 45701  
740/593-8701

Situated in the northeast quarter of Section 35 and the southeast quarter of Section 36 and the northwest quarter of Section 29, Town 4, Range 13, Lodi Township, Athens County, Ohio and described as follows:

Commencing at the northeast corner of said Section 35 (witness a found 5/8 inch iron pin North 87 degrees 02 minutes 11 seconds West 2.75 feet); thence on an assumed bearing of North 83 degrees 34 minutes 34 seconds West, a distance of 1188.28 feet to an iron pin\* at the northeast corner of a 28.26-acre tract described in Volume 35 Page 493 of the Athens County Official Deed Records and on the west line of an 11.778-acre tract described in Volume 266 Page 972 of the Athens County Official Deed Records; thence along the east line of said 28.26 acre tract and the West line of said 11.778-acre tract South 2 degrees 49 minutes 23 Seconds East, a distance of 109.10 feet to a point, the southwest corner of said 11.778-acre tract and THE TRUE POINT OF BEGINNING; thence leaving the east line of said 28.26-acre tract and along the south line of said 11.778-acre tract North 78 degrees 43 minutes 02 seconds East (passing an iron pin\* at 52.37 feet) for a total distance of 569.20 feet to an iron pin\*; thence South 53 degrees 10 minutes 07 seconds East, a distance of 206.47 feet to a found iron pin; thence South 80 degrees 17 minutes 36 seconds East (passing a found iron pin at 445.11 feet) for a total distance of 453.95 feet to a set iron pin on the east line of Section 35 and the West line of Section 29; thence leaving the south line of aforesaid 11.778-acre tract and along the east line of said Section 35 and the west line of said Section 29 South 06 degrees 25 minutes 05 seconds West 149.27 feet to a set iron pin; thence leaving the said Section line and along the south line of property owned by Russel Phillips et al. described in Volume 101 Page 447 of the Athens County Official Deed Records and along the north line of a 28.88 acre tract described as the fourth tract in Volume 223 Page 620 of the Athens County Deed Records South 83 degrees 53 minutes 07 seconds East (passing a set iron pin at 265.55 feet) for a total distance of 295.55 feet to a point in the center of Athens County Road 98; thence along the center of said Athens County Road 98 South 44 degrees 13 minutes 47 seconds East, a distance of 29.13 feet to a point; thence South 31 degrees 18 minutes 49 seconds East, a distance of 49.05 feet to a point; thence South 10 degrees 04 minutes 37 seconds East, a distance of 6.81 feet to a point; thence leaving the said

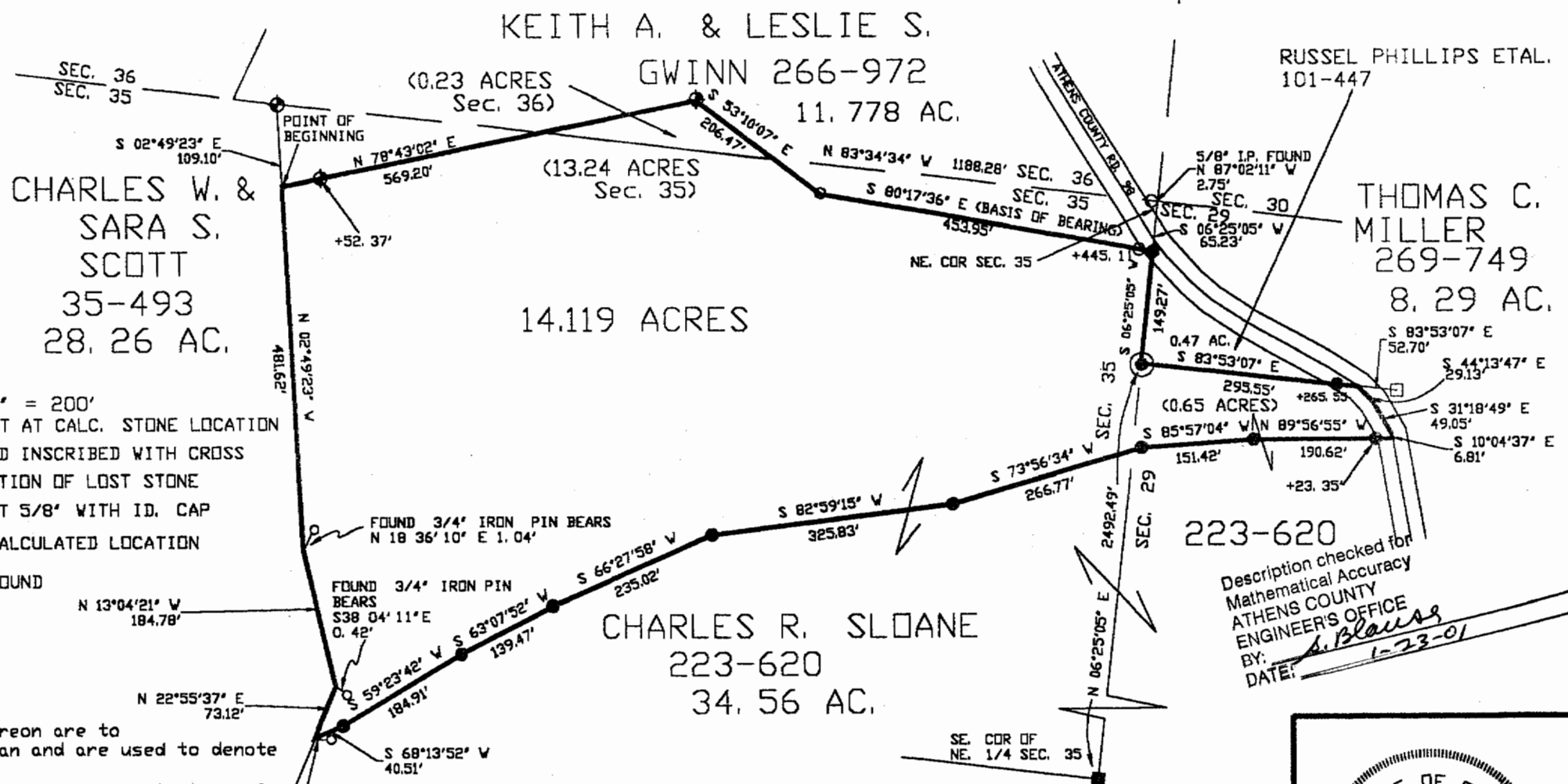
Athens County Road 98 North 89 degrees 56 minutes 55 seconds West (passing a set iron pin at 23.35 feet) for a total a distance of 190.62 feet to a set iron pin; thence South 85 degrees 57 minutes 04 seconds West, a distance of 151.42 feet to a set iron pin; thence South 73 degrees 56 minutes 34 seconds West, a distance of 266.77 feet to a set iron pin; thence South 82 degrees 59 minutes 15 seconds West, a distance of 325.83 feet to a set iron pin; thence South 66 degrees 27 minutes 58 seconds West, a distance of 235.02 feet to a set iron pin; thence South 63 degrees 07 minutes 52 seconds West, a distance of 139.47 feet to a set iron pin; thence South 59 degrees 23 minutes 42 seconds West, a distance of 184.91 feet to a set iron pin; thence South 68 degrees 13 minutes 52 seconds West, a distance of 40.51 feet to a point on the east line of the aforesaid 28.26 acre tract (witness a found  $\frac{3}{4}$  inch diameter iron pin North 68 degrees 15 minutes 32 seconds East 0.50 feet); thence along the east line of said 28.26 acre tract the following three courses and distances North 22 degrees 55 minutes 37 seconds East, a distance of 73.12 feet to a point (witness a found  $\frac{3}{4}$  inch diameter iron pin South 38 degrees 04 minutes 11 seconds East 0.42 feet); thence North 13 degrees 04 minutes 21 seconds West, a distance of 184.78 feet to a point (witness a found  $\frac{3}{4}$  inch diameter iron pin North 18 degrees 36 minutes 10 seconds East 1.04 feet); thence North 2 degrees 49 minutes 23 seconds West, a distance of 481.62 feet to the point of beginning and containing 14.119-acres there being 0.23 acres out of a 10 acre tract in Section 36 described as the third tract, 0.65 acres in Section 29 out of a 28.88 acre tract described as the fourth tract and 13.24 acres in Section 35 out of a 16 acre tract described as the second tract in Volume 223 Page 620 of the Athens County Deed Records.

- Denotes iron pin location determined by calculation from previous surveys.

Note: Unless otherwise noted, all set iron pins are  $\frac{5}{8}$  inch diameter rebar and 30 inches in length and capped with a plastic identification marker inscribed L.F. Swoyer P.S. 6765.

The above description was prepared under the supervision of Leonard F. Swoyer Professional Land Surveyor Number 6765 and was based on a survey performed by Southeastern Land Surveys dated January 23, 2001. Subject to all easements and right of ways of record.

Description checked for  
Mathematical Accuracy  
ATHENS COUNTY  
ENGINEER'S OFFICE  
BY: Blaise  
DATE: 1-23-01



- SCALE 1" = 200'
- ⊙ = IRON PIN SET AT CALC. STONE LOCATION
  - = STONE FOUND INSCRIBED WITH CROSS
  - = CALC. LOCATION OF LOST STONE
  - = IRON PIN SET 5/8" WITH ID. CAP
  - ⊕ = IRON PIN CALCULATED LOCATION
  - = IRON PIN FOUND

Bearings shown hereon are to an assumed meridian and are used to denote angles only.  
 Basis of bearing is the southerly line of the adjoining 11.778 acres which bears S 80° 17' 36" E

- PERTINENT DOCUMENTS:
1. ALL DEEDS AS SHOWN
  2. ATHENS COUNTY ENGR. RECORDS VOL. 6 PG. 381, VOL. 7 PG. 106 & 176
  3. Survey plat done by Dale Whaley 12/27/73

PLAT OF SURVEY OF 14.119 ACRES  
 LOCATED IN SECTIONS 29, 35 & 36, TOWN 4, RANGE 13, LODI  
 TOWNSHIP, ATHENS COUNTY, OHIO  
 PREPARED BY  
 SOUTHEASTERN LAND SURVEYS  
 FOR CHARLIE SLOANE JANUARY 22, 2001 LEONARD F. SWOYER JR. P. S. 6765

Description checked for  
 Mathematical Accuracy  
 ATHENS COUNTY  
 ENGINEER'S OFFICE  
 BY: *S. Blaus*  
 DATE: 1-23-01

