

DESCRIPTION OF A 16.19 ACRE TRACT

Situated in Section 29, T.4, R.13, Lodi Township, Athens County, Ohio and being a part of the Clyde Barnhart Jr. Tract as described in 454-1262 O.R. and being more particularly described as follows:

Beginning at a point in Angell Road, said point bears South 05 degrees 19 minutes 54 seconds West, 169.46 feet from the South-west corner of the North -east Quarter of Section 29, thence, along the lines of Curtiss (416-308 O.R. and McClearly (143-783 O.R.)

N 5° 19' 54" E, 782.72 feet to a stone found , passing an iron pin found at 36.72 feet;

Thence, along the lines of McClearly (143-783 O.R.) and Bobo (383-2153 O.R.)

S 86° 36' 57" E, 800.40 feet to a mag nail set in Angell Road;

Thence, along said road:

S 24° 47' 48" W, 174.11 feet;

S 19° 11' 51" W, 162.21 feet;

S 6° 55' 43" W, 159.65 feet;

S 2° 40' 46" E, 239.19 feet;

S 2° 45' 52" E, 200.18 feet;

S 1° 09' 25" E, 106.83 feet to a mag nail set at the intersection of Angell Road with Bainey Road;

Thence, continuing with Angell Road:

N 88° 24' 14" W, 203.96 feet;

N 78° 47' 31" W, 208.47 feet;

N 60° 00' 32" W, 188.59 feet;

N 51° 09' 25" W, 227.77 feet to the point of beginning and containing 16.19 acres.

Subject to all easements and rights of way of record

Bearings Based on Grid North N.A.D. 83

The above description is based on a filed survey completed April 2012 by John M. Branner P.S. 6805

John M. Branner

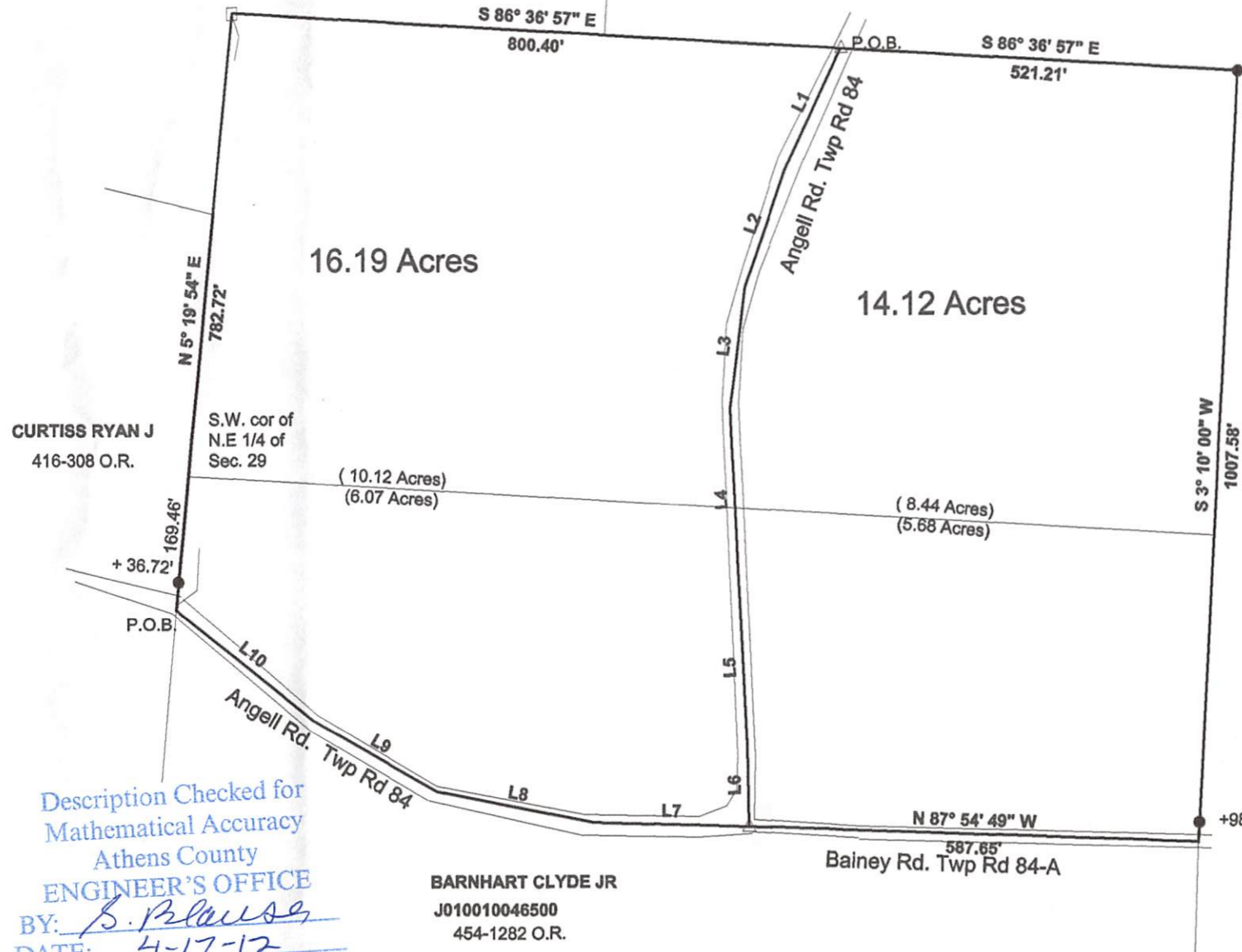


Description Checked for
Mathematical Accuracy
Athens County
ENGINEER'S OFFICE
BY: S. Blause
DATE: 4-17-12

MCCLEARY GEORGE C & SHERRY S
143-783 O.R.

BOBO BOYD B & CAROLYN W
383-2153 O.R.

Line	Bearing	Distance
1	S 24° 47' 48" W	174.11'
2	S 19° 11' 51" W	162.21'
3	S 6° 55' 43" W	159.65'
4	S 2° 40' 46" E	239.19'
5	S 2° 45' 52" E	200.18'
6	S 1° 09' 25" E	106.83'
7	N 88° 24' 14" W	203.96'
8	N 78° 47' 31" W	208.47'
9	N 60° 00' 32" W	188.59'
10	N 51° 09' 25" W	227.77'



BAINY RICHARD A & DIANA E
339-675 D.R.

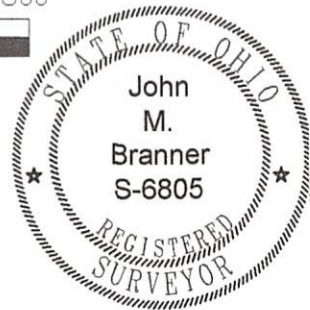
Survey of two tracts in Section 29, T.4, R.13.
Lodi Township, Athens County, Ohio
Surveyed April 2012

John M. Branner

John M. Branner P.S. 6805
62 East First Street
The Plains, Ohio 45780
Athens, Ohio 45701
740-541-0350



Scale 1 inch = 200 feet
 △ = Mag nail set
 ● = Iron pin found
 □ = stone found
 Bearings: Grid North N.A.D. 83



Description Checked for
Mathematical Accuracy
Athens County
ENGINEER'S OFFICE
BY: B. Blaise
DATE: 4-17-12

BARNHART CLYDE JR
J010010046500
454-1282 O.R.