

# BRANNER SURVEYING

MEMBER-PROFESSIONAL LAND SURVEYORS OF OHIO

12500 N. PEACH RIDGE ROAD  
ATHENS, OHIO 45701

JOHN M. BRANNER  
Registered Land Surveyor

TELEPHONE  
(614) 592-5778

## DESCRIPTION OF A 1.437 ACRE TRACT

Situated in Section 29, T. 4, R. 13, Lodi Township, Athens County, Ohio, being a part of a 74.52 acre tract described in Volume 373, Page 625, Athens County Deed of Records and being more particularly described as follows:

Commencing at the South-west corner of Section 29;  
thence, with the Section line, North 3 degrees 51 minutes 45 seconds East, a distance of 112.28 feet to a point, said point being the POINT OF BEGINNING;  
thence, continuing with said section line, North 3 degrees 51 minutes 45 seconds East, a distance of 398.40 feet to a point;  
thence, leaving said Section line, North 84 degrees 46 minutes 52 seconds East, a distance of 5.82 feet an iron pin found on the State of Ohio right of way described in Volume 109, Page 515, Official Records of Athens County;  
thence, following said right of way, South 46 degrees 57 minutes 26 seconds East, a distance of 214.22 feet to an iron pin found;  
thence, South 39 degrees 08 minutes 54 seconds East, a distance of 88.23 feet to an iron pin found;  
thence, South 25 degrees 47 minutes 26 seconds East, a distance of 88.07 feet to a point in a creek, witnessed by an iron pin found bearing North 10 degrees 10 minutes 52 seconds East, a distance of 4.93 feet;  
thence, South 40 degrees 20 minutes 43 seconds West, a distance of 44.40 feet to an iron pin found;  
thence, South 82 degrees 36 minutes 15 seconds West, a distance of 80.33 feet to an iron pin found;  
thence, South 73 degrees 57 minutes 03 seconds West, a distance of 136.79 feet to an iron pin found;  
thence, South 62 degrees 59 minutes 31 seconds West, a distance of 48.65 feet to the POINT OF BEGINNING and containing 1.437 acres.

Subject to all easements and rights of way of record.  
All iron pin set are 5/8 inch x 30 inch long rebar.

The above description is based on a field survey completed March 1997 by John M. Branner P.S. 6805

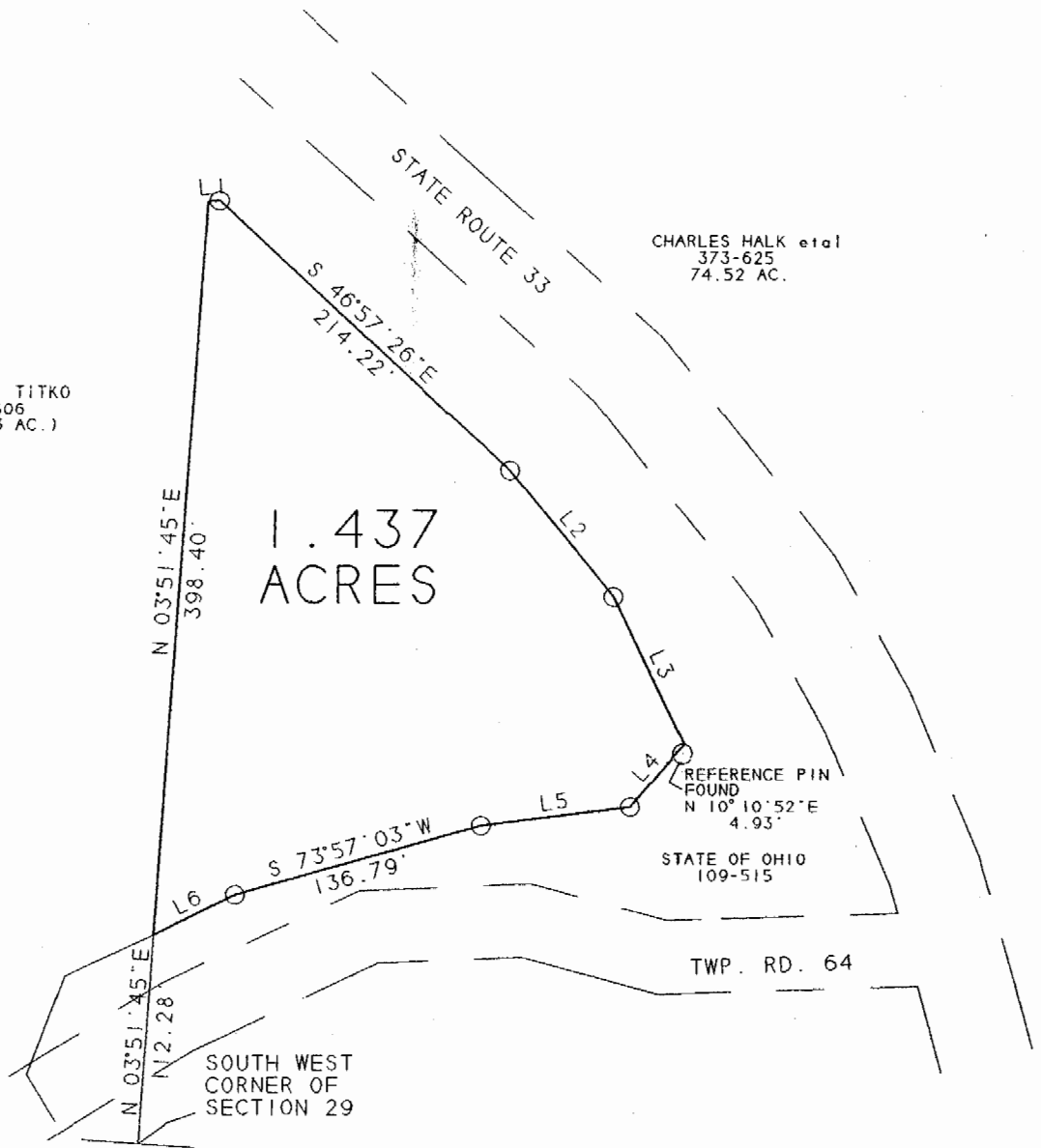
Description checked for  
Mathematical Accuracy  
ATHENS COUNTY  
ENGINEER'S OFFICE

BY: S. Blause  
DATE: 3-27-97

17

JERRY L. TITKO  
98-506  
(80.93 AC.)

CHARLES HALK et al  
373-625  
74.52 AC.



LINE	BEARING	DISTANCE	
L 1	N 84°46'52"E	5.81'	
L 2	S 39°08'54"E	88.23'	
L 3	S 25°47'26"E	88.07'	
L 4	S 40°20'43"W	44.40'	44.05 DEED
L 5	S 82°36'15"W	80.33'	79.47 DEED
L 6	S 62°59'31"W	48.65'	50.60 DEED



SCALE 1 INCH = 100 FEET

○ = IRON PIN FOUND

● = IRON PIN SET

SURVEY OF A 1.437 ACRE TRACT  
SEC. 29, T.4, R.13, LODI TWP.  
ATHENS COUNTY, OHIO  
SURVEYED MARCH 1997

BEARINGS SHOWN HEREON  
ARE BASED ON A SURVEY OF AN  
0.11 ACRE TRACT AND ARE USED  
TO DENOTE ANGLES ONLY

JOHN M. BRANNER P.S. 6805  
12500 N. PEACH RIDGE ROAD  
ATHENS, OHIO 592-5778

Description checked for  
Mathematical Accuracy  
ATHENS COUNTY  
ENGINEERING OFFICE  
BY: *S. Blauer*  
DATE: 3-27-97

18

LOD # 29