

### **38.00 ACRE PARCEL**

Situated in Lodi Township, Athens County, State of Ohio, and being in Section 34, Town 4 North, Range 13 West of the Ohio Company's Purchase and being described as follows: beginning at an iron pin set, said iron pin being on the west line of said Section 34 and being S 00° 59' 18" E, a distance of 1672.79' from the northwest corner of said Section 34, said iron pin also being on the west line of the Jeffers parcel as described in the Athens County Official Records Volume 494, Page 97 and the east line of the Young parcel as described in the Athens County Official Records Volume 149, Page 205;

thence S 00° 59' 18" W, a distance of 998.97' along the west line of the Jeffers parcel as described in the Athens County Official Records Volume 494, Page 97 and the east line of the Young parcel as described in the Athens County Official Records Volume 149, Page 502 to an iron pin set at the common corner between the Jeffers parcel as described in the Athens County Official Records Volume 494, Page 97 and the Young parcel as described in the Athens County Official Records Volume 149, Page 502 and the Walsh parcel as described in the Athens County Deed Records Volume 337, Page 985;

thence S 89° 54' 46" E, a distance of 1304.00' along the south line of the Jeffers parcel as described in the Athens County Official Records Volume 494, Page 97 and the north line of the Walsh parcel as described in the Athens County Deed Records Volume 337, Page 985 to an iron pin set;

thence N 02° 11' 02" E, a distance of 623.97' along the south line of the Jeffers parcel as described in the Athens County Official Records Volume 494, Page 97 and the north line of the Walsh parcel as described in the Athens County Deed Records Volume 337, Page 985 to an iron pin set;

thence S 50° 09' 22" E, a distance of 733.50' along the south line of the Jeffers parcel as described in the Athens County Official Records Volume 494, Page 97 and the north line of the Walsh parcel as described in the Athens County Deed Records Volume 337, Page 985 to a corner stone found at the common corner between the Jeffers parcel as described in the Athens County Official Records Volume 494, Page 97 and the Gwinn parcel as described in the Athens County Official Records Volume 186, Page 701;

thence N 00° 15' 26" E, a distance of 844.40' along the east line of the Jeffers parcel as described in the Athens County Official Records Volume 494, Page 97 and the west line of the Gwinn parcel as described in the Athens County Official Records Volume 186, Page 701 to an iron pin set

thence N 89° 54' 46" W, a distance of 1877.51' along a newly created line through the Jeffers parcel as described in the Athens County Official Records Volume 494, Page to the POINT OF BEGINNING; said described tract containing 38.00 Acres, more or less, excepting all legal utility easements and rights of way.

#### Reference Deed:

18.78 ACRES FROM OFFICIAL RECORDS VOLUME 494, PAGE 97, TRACT 1

7.92 ACRES FROM OFFICIAL RECORDS VOLUME 494, PAGE 97, TRACT 3

11.30 ACRES FROM OFFICIAL RECORDS VOLUME 494, PAGE 97, TRACT 2

Bearings are assumed and are for angle measurement only.

Note: This parcel must be conveyed to an adjoiner.

The above description is based on a survey in March and April 2014 by E & E Borderline Surveying, Robert R. Eason, Ohio P.S. No. 7033.

Description Checked for  
Mathematical Accuracy  
Athens County  
ENGINEER'S OFFICE  
BY: *Robert R. Eason*  
DATE: 4/30/14



*Robert R. Eason*  
4/29/14

# PLAT OF PARCELS SURVEYED FOR JEFFERS

LODI TOWNSHIP, ATHENS COUNTY, OHIO, SECTION 34, T4N, R13W

REFERENCE DEED:

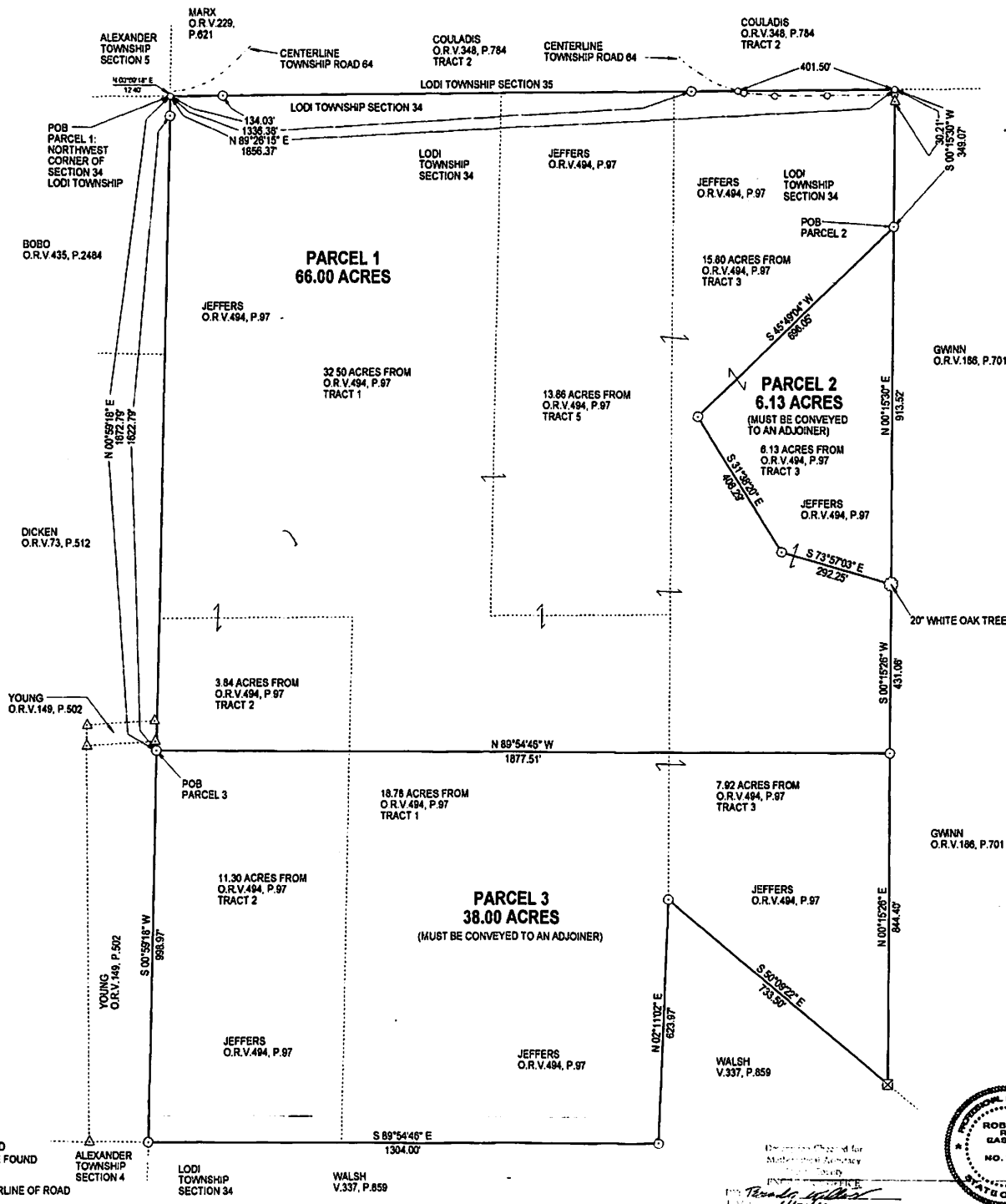
**PARCEL 1: 66.00 ACRES TOTAL**  
 32.50 ACRES FROM OFFICIAL RECORDS VOLUME 494, PAGE 97, TRACT 1  
 13.86 ACRES FROM OFFICIAL RECORDS VOLUME 494, PAGE 97, TRACT 5  
 15.80 ACRES FROM OFFICIAL RECORDS VOLUME 494, PAGE 97, TRACT 3  
 3.84 ACRES FROM OFFICIAL RECORDS VOLUME 494, PAGE 97, TRACT 2

**PARCEL 2: 6.13 ACRES TOTAL**  
 6.13 ACRES FROM OFFICIAL RECORDS VOLUME 494, PAGE 97, TRACT 3

**PARCEL 3: 38.00 ACRES TOTAL**  
 18.78 ACRES FROM OFFICIAL RECORDS VOLUME 494, PAGE 97, TRACT 1  
 7.92 ACRES FROM OFFICIAL RECORDS VOLUME 494, PAGE 97, TRACT 3  
 11.30 ACRES FROM OFFICIAL RECORDS VOLUME 494, PAGE 97, TRACT 2

BEARINGS ARE ASSUMED AND ARE FOR ANGLE MEASUREMENT ONLY.

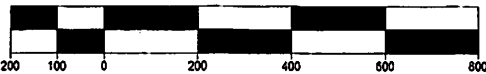
THIS PLAT SHOWS NO LEGAL EASEMENTS OR RIGHTS OF WAY.



- SURVEY POINT
- ⊙ IRON PIN SET
- ▲ IRON PIN FOUND
- ⊠ CORNERSTONE FOUND
- 20' WHITE OAK
- - - CENTERLINE OF ROAD

NOTE: ALL IRON PINS SET ARE  
 5/8" X 30" REBAR WITH  
 PLASTIC ID CAP

NOTE: PARCELS 2 AND 3 MUST BE CONVEYED TO AN ADJOINER  
 1 INCH = 200 FEET

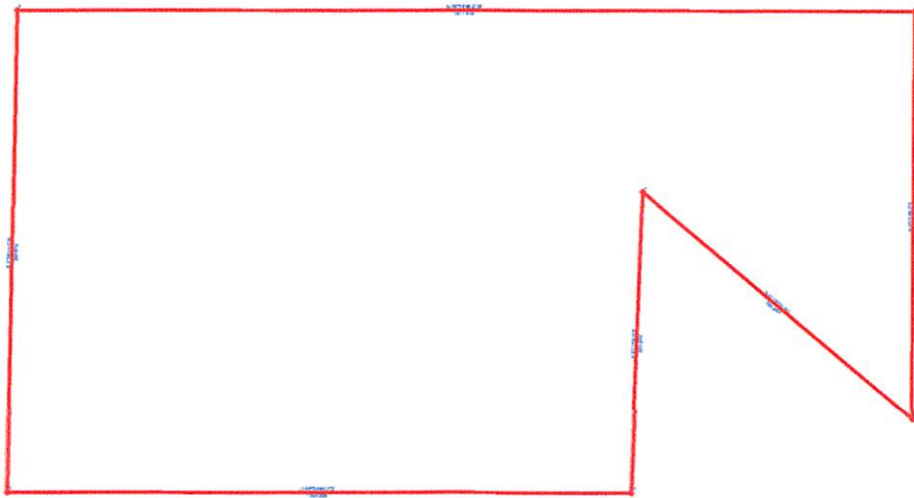


**E & E BORDERLINE SURVEYING**  
 104 MULBERRY AVE., 2ND FLOOR  
 POMEROY, OHIO 45769  
 (740) 892-7077

Approved for  
 Athens County  
 Surveyor  
 [Signature]  
 4/29/14



[Signature]  
 4/29/14



# PLAT OF PARCELS SURVEYED FOR JEFFERS

LODI TOWNSHIP, ATHENS COUNTY, OHIO, SECTION 34, T4N, R13W

REFERENCE DEED:

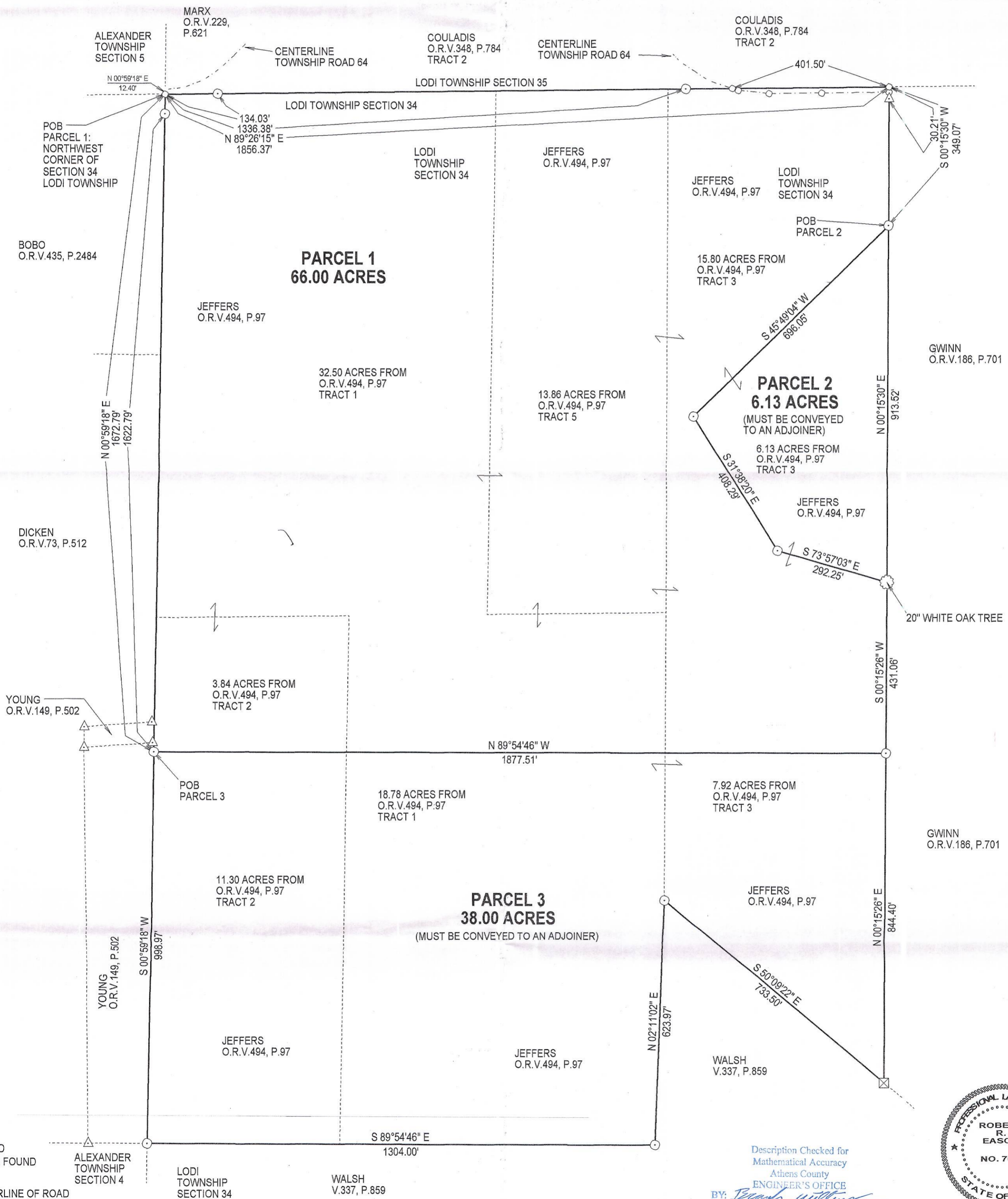
PARCEL 1: 66.00 ACRES TOTAL  
32.50 ACRES FROM OFFICIAL RECORDS VOLUME 494, PAGE 97, TRACT 1  
13.86 ACRES FROM OFFICIAL RECORDS VOLUME 494, PAGE 97, TRACT 5  
15.80 ACRES FROM OFFICIAL RECORDS VOLUME 494, PAGE 97, TRACT 3  
3.84 ACRES FROM OFFICIAL RECORDS VOLUME 494, PAGE 97, TRACT 2

PARCEL 2: 6.13 ACRES TOTAL  
6.13 ACRES FROM OFFICIAL RECORDS VOLUME 494, PAGE 97, TRACT 3

PARCEL 3: 38.00 ACRES TOTAL  
18.78 ACRES FROM OFFICIAL RECORDS VOLUME 494, PAGE 97, TRACT 1  
7.92 ACRES FROM OFFICIAL RECORDS VOLUME 494, PAGE 97, TRACT 3  
11.30 ACRES FROM OFFICIAL RECORDS VOLUME 494, PAGE 97, TRACT 2

BEARINGS ARE ASSUMED AND ARE FOR ANGLE MEASUREMENT ONLY.

THIS PLAT SHOWS NO LEGAL EASEMENTS OR RIGHTS OF WAY.

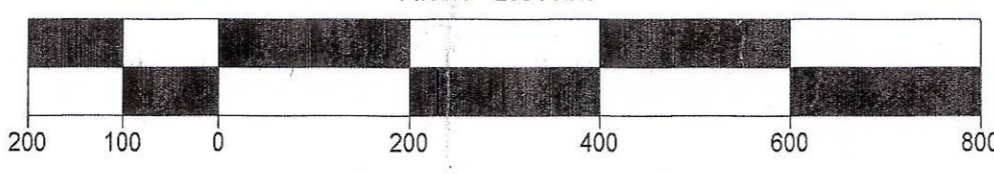


- SURVEY POINT
- ⊙ IRON PIN SET
- △ IRON PIN FOUND
- ⊠ CORNERSTONE FOUND
- 20" WHITE OAK
- - - - - CENTERLINE OF ROAD

NOTE: ALL IRON PINS SET ARE 5/8" X 30" REBAR WITH PLASTIC ID CAP

NOTE: PARCELS 2 AND 3 MUST BE CONVEYED TO AN ADJOINER

1 INCH = 200 FEET



Description Checked for  
Mathematical Accuracy  
Athens County  
ENGINEER'S OFFICE  
BY: *Robert Eason*  
DATE: 4/30/14



*Robert Eason*  
4/29/14

**E & E BORDERLINE SURVEYING**  
104 MULBERRY AVE., 2ND FLOOR  
POMEROY, OHIO 45769  
(740) 992-7077