

DESCRIPTION OF A 2.088 ACRE TRACT

Situated in Section 35, Lodi Township, Athens County, Ohio and being more particularly described as follows:

Commencing at an iron pin found at the South-west corner of South one-half of South-west Quarter of Section 25, thence, along the East-line of Section 31, South 00 Degrees 11 Minutes 47 Seconds West, 543.14 feet to a point, passing an iron pin found at 313.56 feet; thence, North 89 Degrees 48 Minutes 13 Seconds West, 330.09 feet to a point in Angel Ridge Road, said point being the POINT OF BEGINNING;

thence, along Angel Ridge Road, North 59 degrees 55 minutes 32 second West, a distance of 190.73 feet to a point ;
thence South 74 degrees 21 minutes 40 seconds West, a distance of 73.25 feet to a point in U.S. 33;
thence, along said Highway, North 54 degrees 20 minutes 48 seconds West, a distance of 220.42 feet;
thence, leaving said highway, North 48 degrees 32 minutes 09 seconds East, a distance of 395.33 feet to an iron pin set, passing an iron pin set at 16.00 feet;
thence South 44 degrees 15 minutes 11 seconds East, a distance of 120.99 feet to an iron pin set;
thence South 21 degrees 19 minutes 26 seconds West, a distance of 135.35 feet to an iron pin set;
thence South 18 degrees 11 minutes 12 seconds East, a distance of 266.65 feet (passing an iron pin set at 238.65 feet) to the POINT OF BEGINNING; said described tract containing 2.088 acres.

Subject to all easements and rights of way of record.

The above description is based on a field survey completed November 1997 by John M. Branner P.S. 6805



Description checked for
Mathematical Accuracy
ATHENS COUNTY
ENGINEER'S OFFICE
BY: [Signature]
DATE: 11-25-97

Lodi # 35

Description checked for
 Mathematical Accuracy
 ATHENS COUNTY
 ENGINEER'S OFFICE
 BY: J. Branner
 DATE: 11-25-97

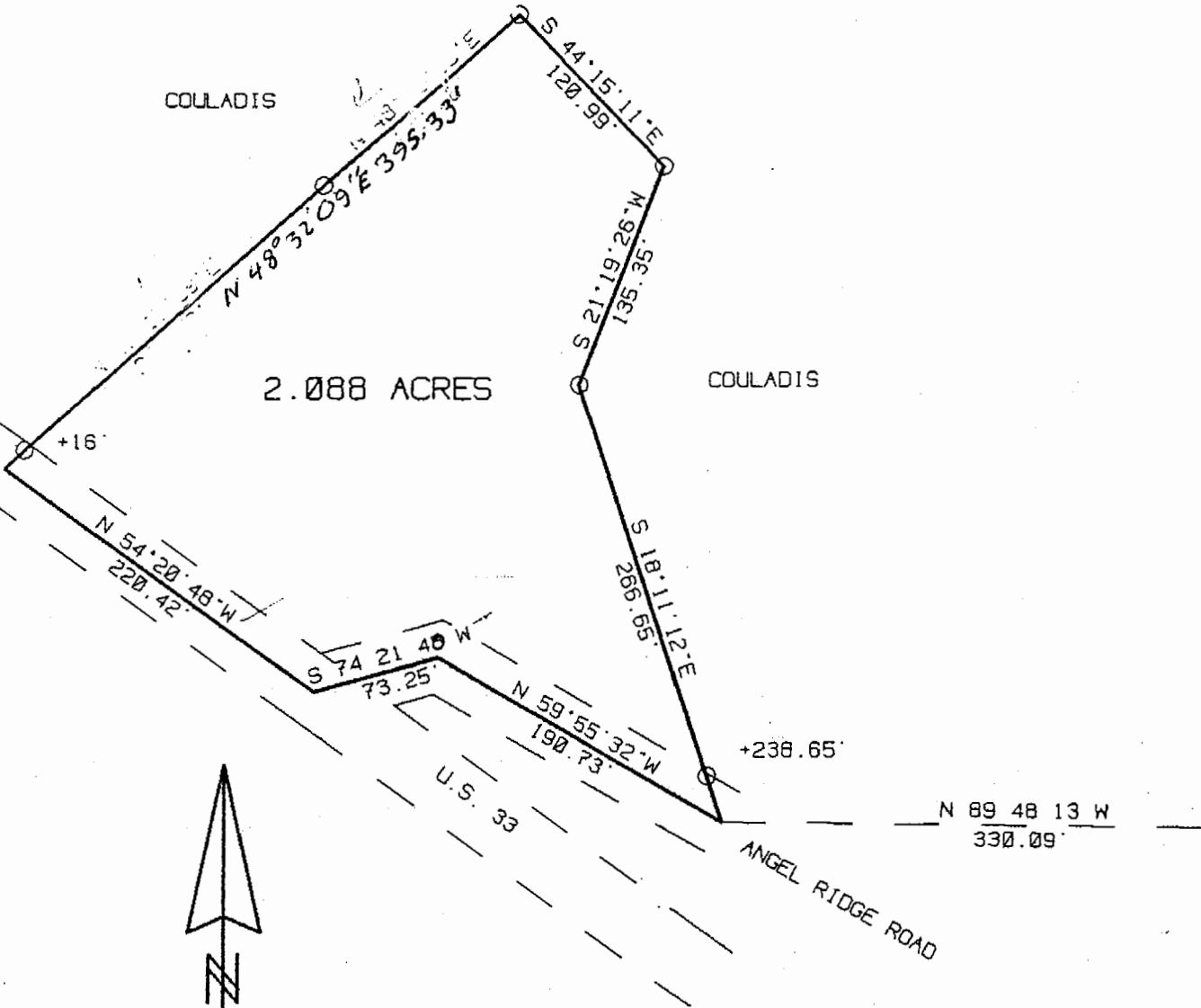
N.W. COR OF
 S 1\2 OF S.W. 1\4
 OF SEC. 29

COULADIS

2.088 ACRES

COULADIS

SECTION 13 95.616
 SECTION 25 543.14' S 00 11 47 W



SCALE 1 INCH = 100 FEET
 ○ = IRON PIN SET
 ● = IRON PIN FOUND

SURVEY OF A 2.088 ACRE TRACT
 IN SECTION 35, LODI TOWNSHIP
 ATHENS COUNTY, OHIO
 SURVEYED NOV. 1997

JOHN M. BRANNER P.S. 6805
 12500 N. PEACH RIDGE ROAD
 ATHENS, OHIO 614-592-5778

