

6.85 ACRE PARCEL

Situated in Lodi Township, Athens County, State of Ohio, and being in Section 35, Town 4 North, Range 13 West of the Ohio Company's Purchase and being described as follows: beginning at a point, said point being the southwest corner of Section 35, Lodi Township;

Thence N 00° 59' 18" E, a distance of 12.40' along the west line of said Section 35, Lodi Township to a point in the centerline of Township Road 64;

Thence the following eighteen calls along the centerline of said Township Road 64

N 82° 53' 43" E, a distance of 46.15'

N 70° 13' 15" E, a distance of 54.22'

N 55° 00' 53" E, a distance of 55.30'

N 46° 08' 45" E, a distance of 95.65'

N 52° 36' 30" E, a distance of 88.85'

N 64° 57' 56" E, a distance of 79.40'

N 73° 42' 04" E, a distance of 148.09'

N 72° 53' 50" E, a distance of 227.43'

N 82° 14' 59" E, a distance of 75.98'

S 83° 18' 41" E, a distance of 58.75'

S 77° 31' 42" E, a distance of 187.21'

S 78° 35' 58" E, a distance of 81.85'

S 63° 10' 02" E, a distance of 59.56'

S 48° 15' 06" E, a distance of 79.20'

S 40° 17' 28" E, a distance of 117.83'

S 44° 38' 08" E, a distance of 36.45'

S 55° 54' 15" E, a distance of 86.21'

S 72° 05' 17" E, a distance of 62.36' to the intersection of the south line of said Section 35 and centerline of said Township Road 64

thence S 89° 26' 15" W, a distance of 1454.87' along the south line of said Section 35 to the POINT OF BEGINNING, passing iron pins set at 118.49 and 1320.84' for reference, said described tract containing 6.85 Acres, more or less, excepting all legal utility easements and rights of way.

Reference Deed: Official Records Volume 348, Page 784, tract 1

Bearings are assumed and are for angle measurement only.

Note: This parcel must be conveyed to an adjoiner.

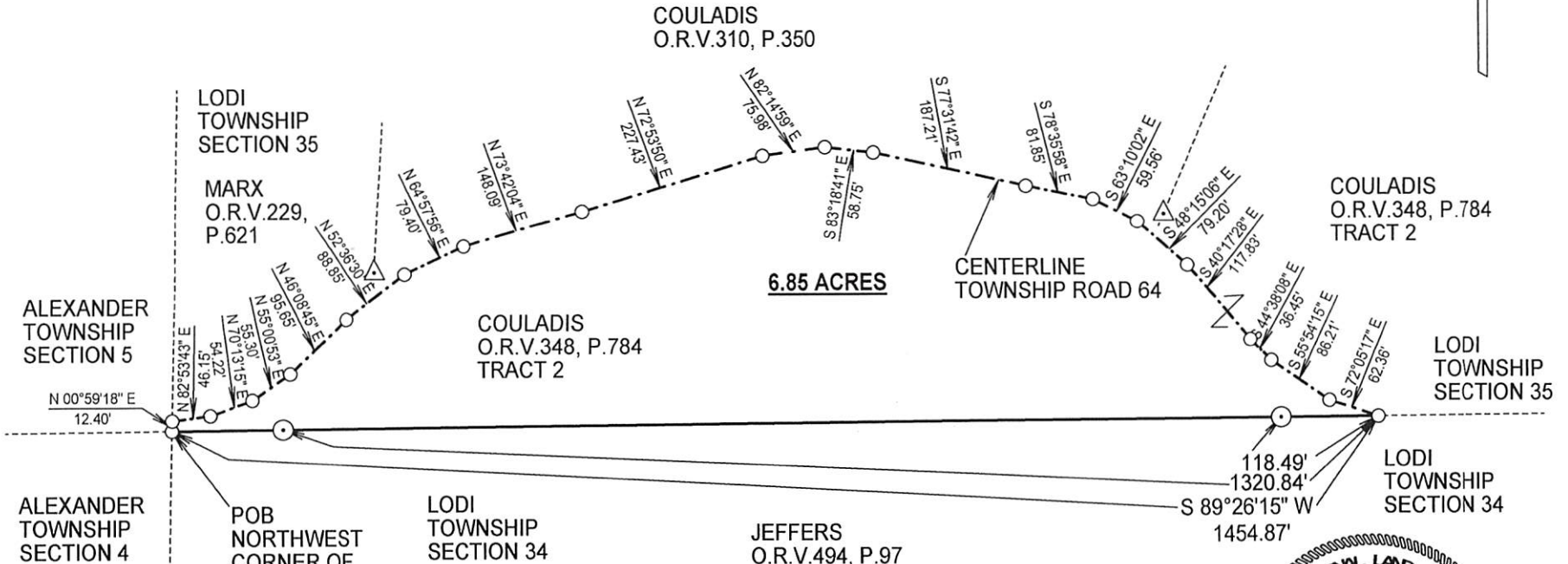
The above description is based on a survey in March 2014 by E & E Borderline Surveying, Robert R. Eason, Ohio P.S. No. 7033.

Description Checked for
Mathematical Accuracy
Athens County
ENGINEER'S OFFICE
BY: David E. Shaw
DATE: 3/19/14



PLAT OF 6.85 ACRE PARCEL SURVEYED FOR JEFFERS

LODI TOWNSHIP, ATHENS COUNTY, OHIO, SECTION 35, T4N, R13W
 REFERENCE DEED: OFFICIAL RECORDS VOLUME 348, PAGE 784, TRACT 2
 BEARINGS ARE ASSUMED AND ARE FOR ANGLE MEASUREMENT ONLY.
 THIS PLAT SHOWS NO LEGAL EASEMENTS OR RIGHTS OF WAY.



- SURVEY POINT
 - ⊙ IRON PIN SET
 - △ IRON PIN FOUND
 - - - - - CENTERLINE OF ROAD
- NOTE: ALL IRON PINS SET ARE
 5/8" X 30" REBAR WITH
 PLASTIC ID CAP

Description Checked for
 Mathematical Accuracy
 Athens County
 ENGINEER'S OFFICE

BY: *David E. Staud*
 DATE: 3/19/14



Robert R. Eason
 3/17/14

1 INCH = 200 FEET



E & E BORDERLINE SURVEYING
 104 MULBERRY AVE., 2ND FLOOR
 POMEROY, OHIO 45769
 (740) 992-7077