

The following described real estate situated in Lodi Township, Athens County, in the State of Ohio, Section 36, Township 4, Range 13, of the Ohio Company Purchase, and being a survey of portions of the Derrick A. Van Der Sluys property (Athens County Official Record Volume 152 Page 76) bounded and described as follows:

Beginning at the intersection of the center line of U.S. 33 and the West line of Section 36 of Lodi Township from which the Southwest corner of Section 36 bears South 02 degrees 19 minutes 32 seconds West a distance of 2081.34 feet;

thence along the center line of U.S. 33 the following four calls:

- 1) South 37 degrees 04 minutes 47 seconds East a distance of 298.56 feet to a point;
- 2) South 37 degrees 05 minutes 34 seconds East a distance of 75.04 feet to a point;
- 3) South 37 degrees 02 minutes 49 seconds East a distance of 195.83 feet to a point;
- 4) South 36 degrees 59 minutes 53 seconds East a distance of 285.19 feet to a point;

thence leaving the center line of U.S. 33, along the West line of the M. Michael and Jo Ann L'Heureux property (Athens County Deed Record Volume 310 Page 671) South 38 degrees 10 minutes 36 seconds West a distance of 147.64 feet to a point in the center of Shade Creek passing iron pins set by this survey at 29.11 feet and 129.30 feet;

thence along the center line of Shade Creek the following four calls:

- 1) South 52 degrees 08 minutes 25 seconds East a distance of 18.75 feet to a point;
- 2) South 60 degrees 20 minutes 01 seconds East a distance of 33.93 feet to a point;
- 3) South 43 degrees 38 minutes 41 seconds East a distance of 40.22 feet to a point;
- 4) South 39 degrees 23 minutes 12 seconds East a distance of 25.84 feet to a point;

thence leaving the center line of Shade Creek, along the lines of the Stewart - MacDonald Manufacturing Company property (Athens County Deed Records Volume 307 Page 245) South 69 degrees 48 minutes 52 seconds West a distance of 90.37 feet to an iron pipe found by this survey passing an iron pin set by this survey at 20.69 feet;

thence continuing along the lines of the Stewart - MacDonald Manufacturing Company property North 35 degrees 26 minutes 08 seconds West a distance of 72.57 feet to an iron pipe found by this survey;

thence continuing along the lines of the Stewart - MacDonald Manufacturing Company property North 38 degrees 28 minutes 31 seconds West a distance of 243.99 feet to a Wild Cherry Tree witnessed by an iron pin set by this survey that bears South 63 degrees 50 minutes 03 seconds a distance of 3.10 feet;

thence continuing along the lines of the Stewart - MacDonald Manufacturing Company property North 20 degrees 34 minutes 27 seconds West a distance of 204.94 feet to a 24 inch Hickory Tree witnessed by an iron pin set by this survey that bears North 59 degrees 25 minutes 39 seconds East a distance of 4.71 feet;

thence continuing along the lines of the Stewart - MacDonald Manufacturing Company property South 86 degrees 16 minutes 34 seconds West a distance of 181.07 feet to an iron pin found by this survey reported to be on the West line of Section 36 of Lodi Township;

thence along the West line of Section 36 of Lodi Township North 02 degrees 19 minutes 32 seconds East a distance of 476.88 feet to the point of beginning passing an iron pin set for reference at 262.06 feet, containing 3.8102 acres more or less of which 0.5195 acres is in tract 1, 0.6809 acres is in tract 2, 2.1522 acres is in tract 3, and 0.4576 acres is in tract 4.

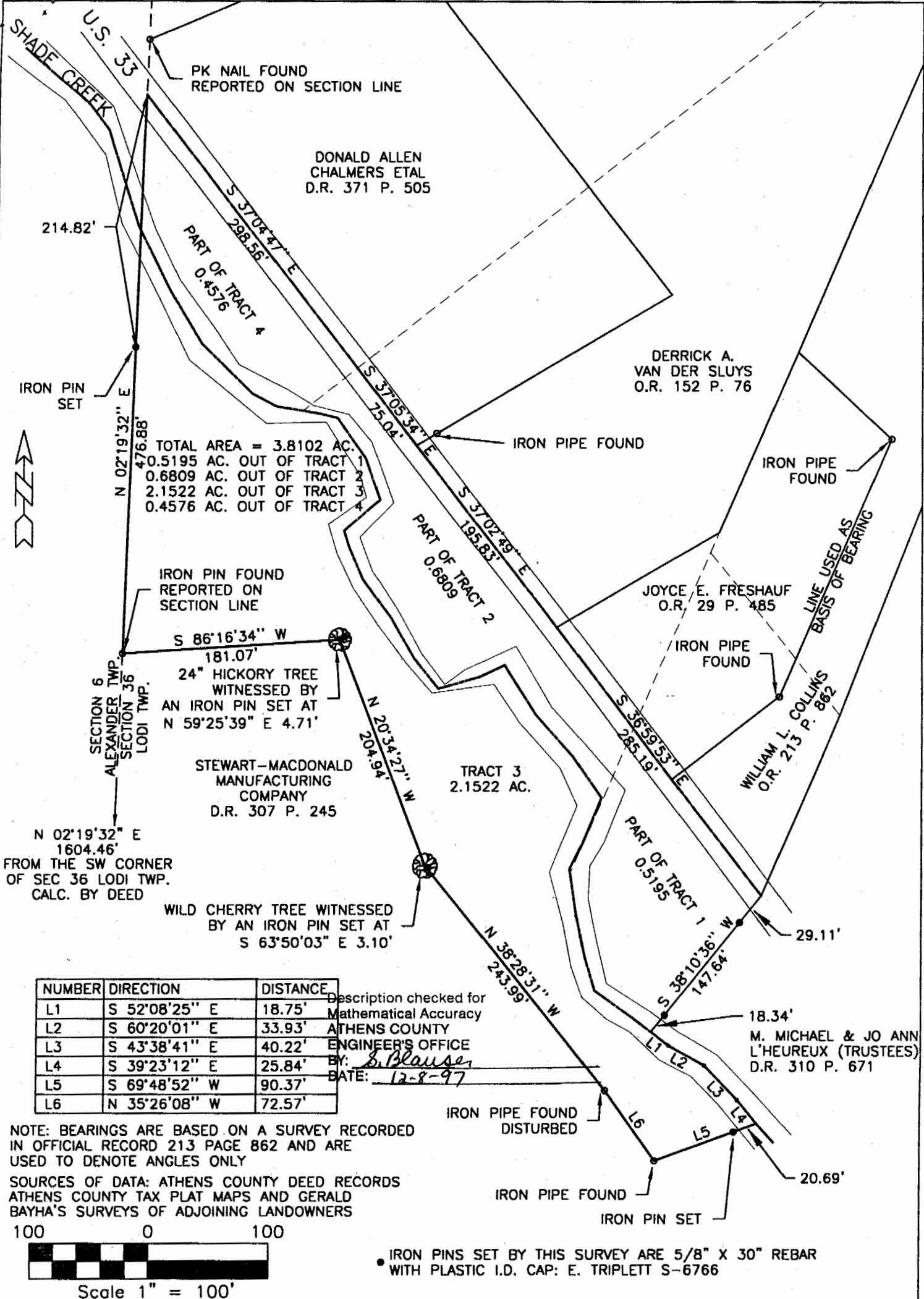
Subject to all legal easements.

The above description was made in accordance with an actual survey conducted under the supervision of Eugene Triplett, P.S. #6766 conducted on December 3 and 4, 1997. Bearings are based on a survey recorded in O.R. 213 Page 862 and are used only to express angular measurement.

Description checked for
Mathematical Accuracy
ATHENS COUNTY
ENGINEER'S OFFICE
BY: S. Blauzer
DATE: 12-8-97

64

Lodi # 36



TOTAL AREA = 3.8102 AC.
 0.5195 AC. OUT OF TRACT 1
 0.6809 AC. OUT OF TRACT 2
 2.1522 AC. OUT OF TRACT 3
 0.4576 AC. OUT OF TRACT 4

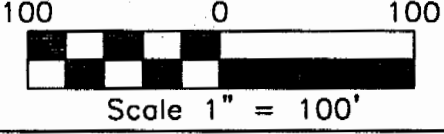
24" HICKORY TREE WITNESSED BY AN IRON PIN SET AT N 59°25'39" E 4.71'
 WILD CHERRY TREE WITNESSED BY AN IRON PIN SET AT S 63°50'03" E 3.10'

NUMBER	DIRECTION	DISTANCE
L1	S 52°08'25" E	18.75'
L2	S 60°20'01" E	33.93'
L3	S 43°38'41" E	40.22'
L4	S 39°23'12" E	25.84'
L5	S 69°48'52" W	90.37'
L6	N 35°26'08" W	72.57'

Description checked for Mathematical Accuracy
 ATHENS COUNTY ENGINEER'S OFFICE
 BY: *S. Blause*
 DATE: 12-8-97

NOTE: BEARINGS ARE BASED ON A SURVEY RECORDED IN OFFICIAL RECORD 213 PAGE 862 AND ARE USED TO DENOTE ANGLES ONLY

SOURCES OF DATA: ATHENS COUNTY DEED RECORDS
 ATHENS COUNTY TAX PLAT MAPS AND GERALD BAYHA'S SURVEYS OF ADJOINING LANDOWNERS



• IRON PINS SET BY THIS SURVEY ARE 5/8" X 30" REBAR WITH PLASTIC I.D. CAP: E. TRIPLETT S-6766

TRIPLETT ENGINEERING SERVICES
 P.O. Box 449
 Pomeroy, Ohio 45769
 (614) 992-2194

Surveyed by:

 Eugene Triplett, P.S. No. 6766

SURVEY OF PORTIONS OF DERRICK A. VAN DER SLUYS PROPERTY
 ATHENS COUNTY OFFICIAL RECORDS VOLUME 152 PAGE 76
 LODI TOWNSHIP, ATHENS COUNTY, OHIO
 TOWNSHIP 4 RANGE 13
 OHIO COMPANY PURCHASE
 DATES OF SURVEY: 12/3 AND 12/4/1997

Date: 12/5/97 Scale: 1" = 100'
 Drawn by: R.T. Checked by: E.T.

65