

Branner Surveying

12500 N. Peach Ridge
Athens, Ohio 45701

Situated in Section 6, T.4, R.13, Lodi Township, Athens County, Ohio and being more particularly described as follows:

Beginning at a point in Lodi Township Rd. 99 (Bobo Rd.) bearing North 6 degrees 30 minutes East, a distance of 1678.61 feet and North 83 degrees 30 minutes West, a distance of 1559.01 feet from the southeast corner of Section 6;

Thence, along said road North 37 degrees 7 minutes 18 seconds West, a distance of 178.27 feet to a point;

Thence, North 30 degrees 1 minute 56 seconds West, a distance of 211.62 feet to a point;

Thence, North 53 degrees 41 minutes 4 seconds West, a distance of 57.42 feet to a point;

Thence, North 72 degrees 45 minutes 48 seconds West, a distance of 65.21 feet to a point;

Thence, leaving said road, North 66 degrees 26 minutes 35 seconds East, a distance of 288.94 feet to an iron pin set, passing a 36 inch oak tree and an iron pin set at 47.10 feet;

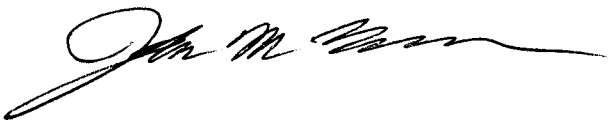
Thence, North 45 degrees 19 minutes 50 seconds East, a distance of 216.91 feet to an iron pin set;

Thence, South 53 degrees 48 minutes 14 seconds East, a distance of 407.27 feet to an iron pin set, passing an iron pin set at 348.21 feet;

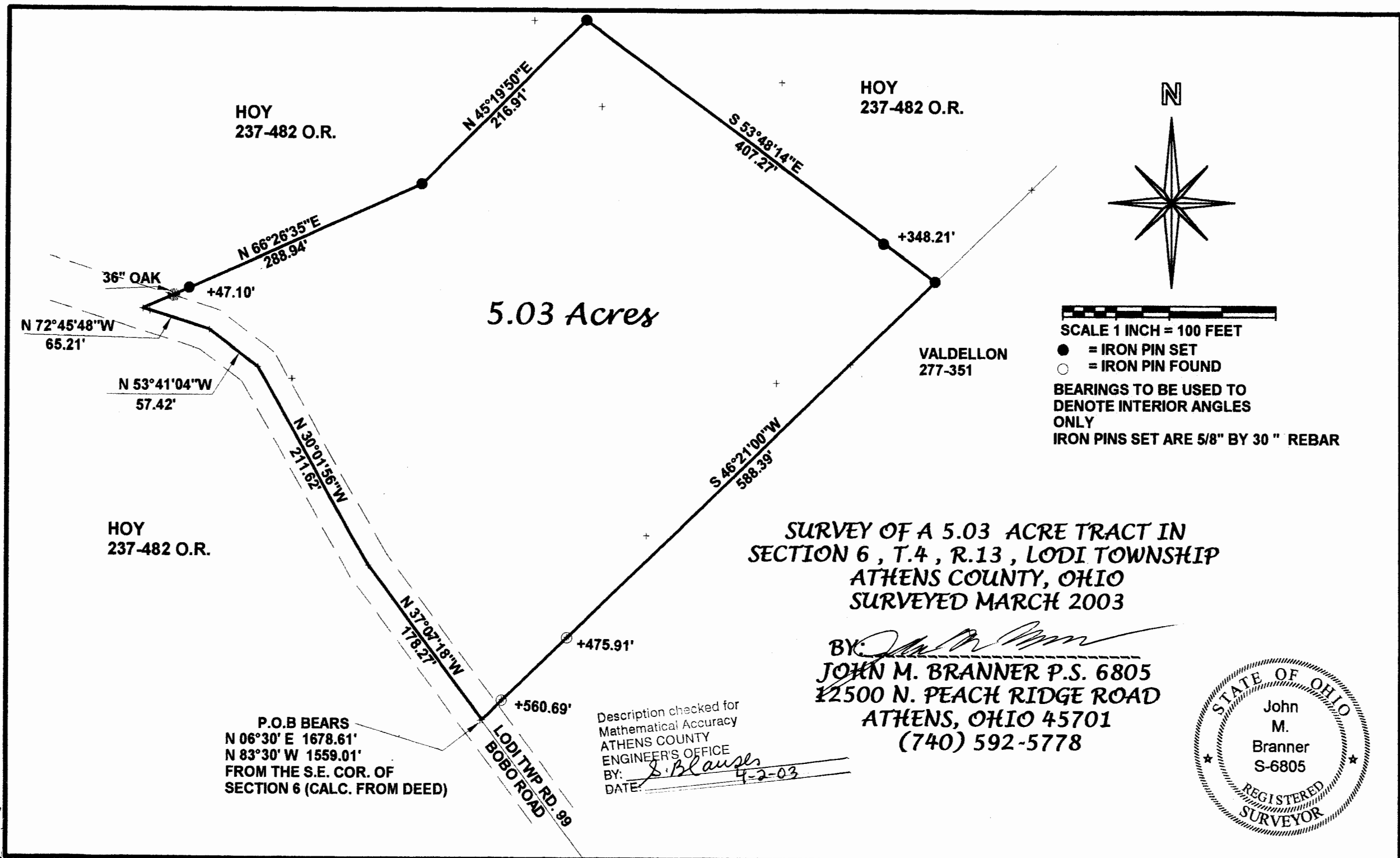
Thence, South 46 degrees 21 minutes 0 seconds West, a distance of 588.39 feet to the point of beginning, passing iron pins found at 475.91 feet and 560.69 feet; describing a tract of land containing 5.03 acres.

Subject to easements and rights of way of record.

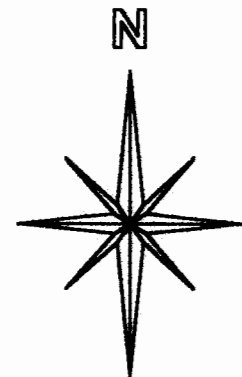
The above description is based on a field survey completed March 2003 by John M. Branner, P.S. 6805.



Description checked for
Mathematical Accuracy
ATHENS COUNTY
ENGINEER'S OFFICE
BY: S. Blaus
DATE: 4-2-03



5.03 Acres



SCALE 1 INCH = 100 FEET
 ● = IRON PIN SET
 ○ = IRON PIN FOUND
 BEARINGS TO BE USED TO DENOTE INTERIOR ANGLES ONLY
 IRON PINS SET ARE 5/8" BY 30" REBAR

SURVEY OF A 5.03 ACRE TRACT IN SECTION 6, T.4, R.13, LODI TOWNSHIP ATHENS COUNTY, OHIO SURVEYED MARCH 2003

BY: *[Signature]*
**JOHN M. BRANNER P.S. 6805
 12500 N. PEACH RIDGE ROAD
 ATHENS, OHIO 45701
 (740) 592-5778**



P.O.B BEARS
 N 06°30' E 1678.61'
 N 83°30' W 1559.01'
 FROM THE S.E. COR. OF SECTION 6 (CALC. FROM DEED)

Description checked for Mathematical Accuracy
 ATHENS COUNTY ENGINEER'S OFFICE
 BY: *S. Blaus*
 DATE: *4-2-03*