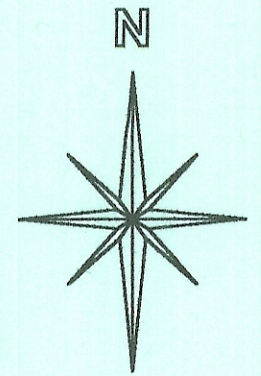
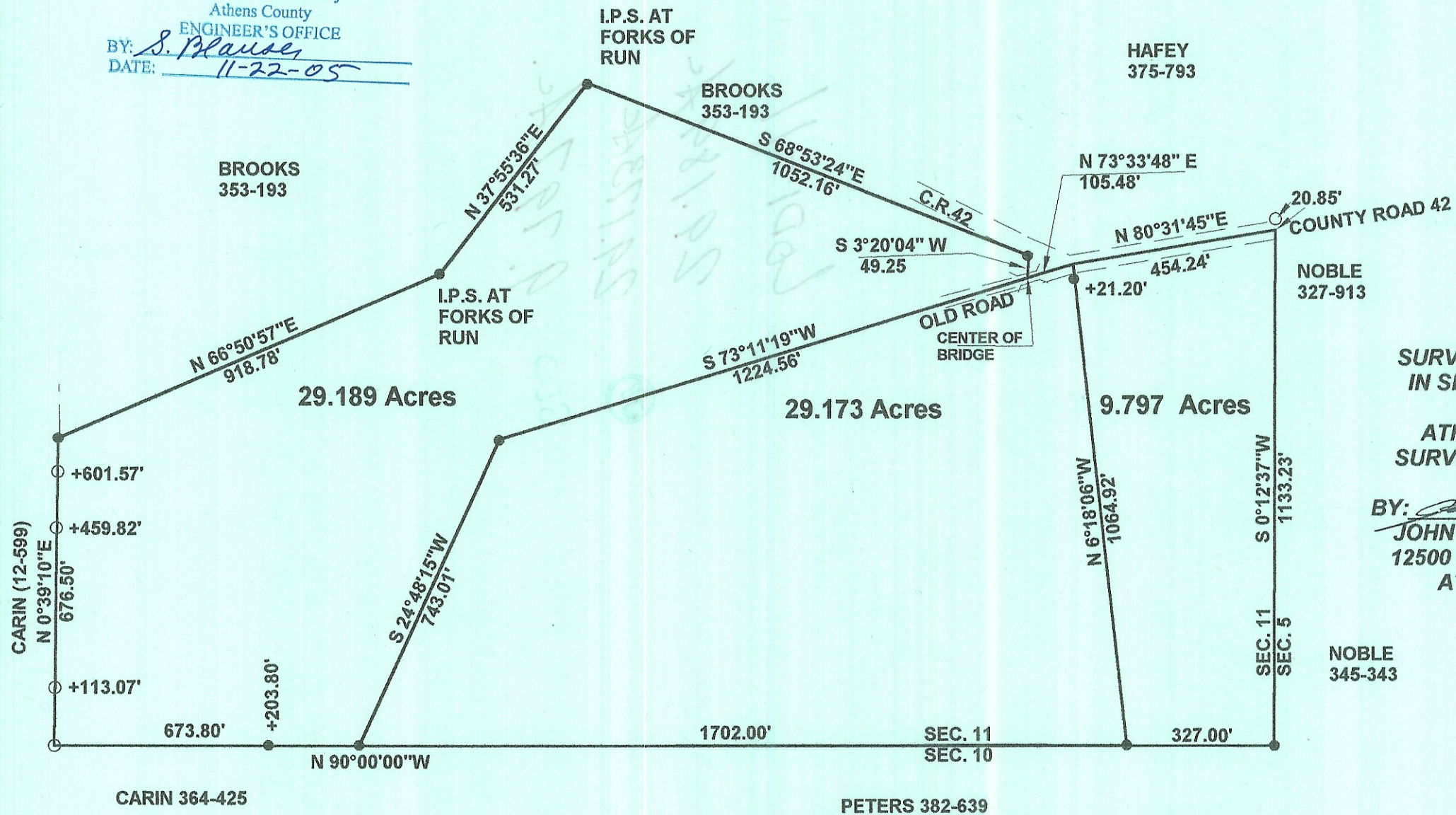


Description Checked for
Mathematical Accuracy
Athens County
ENGINEER'S OFFICE

BY: S. Blausen
DATE: 11-22-05



SCALE 1 INCH = 300 FEET
● = IRON PIN SET
○ = IRON PIN FD.
ASSUMED BEARINGS
TO BE USED TO DENOTE
INTERIOR ANGLE ONLY



**SURVEY OF THREE TRACTS
IN SECTION 11, T.4, R.13,
LODI TOWNSHIP
ATHENS COUNTY, OHIO
SURVEYED NOVEMBER 2005**

BY: John M. Branner
**JOHN M. BRANNER P.S. 6805
12500 N. PEACH RIDGE ROAD
ATHENS, OHIO 45701
(740) 592-5778**

