

HUGHES LAND SURVEYING

PO BOX 216
MINERAL WELLS, WV. 26150
304-489-9640
304-481-1497

57.6378 Acre
Legal Description

Situated in the State of Ohio, Athens County, Lodi Township, Township 4 North, Range 13 West, Section 14, Fraction Section 13, being part of a parcel conveyed to Paul Bound as recorded in Official Record 540 on Page 2633, bounded and described as follows.

Beginning for reference at a 5/8" capped rebar set in 2007 at the southeast corner of Section 14, inside the remnants of a stump of a 45" dead tree as reported by Leonard F. Swoyer, PS 6765, during a 5.778 acre survey for William A. Carter on October 10, 1992, said capped rebar being the southeast corner of a 73.8892 Acre parcel conveyed unto Paul Bound as recorded in Official Record 540 on Page 2633.

THENCE along the east side of Section 14 N 00° 02' 25" W a distance of 391.13 feet to a point in the center of Carter Road, Township Road No. 75, said point being the True Point of Beginning for the parcel herein described.

THENCE along the center of Carter Road the following sixteen (16) courses, N 88° 31' 57" W a distance of 113.34 feet to a point;

THENCE N 83° 14' 19" W a distance of 81.03 feet to a point;

THENCE N 79° 35' 45" W a distance of 181.54 feet to a point;

THENCE N 78° 06' 39" W a distance of 192.33 feet to a point;

THENCE N 87° 16' 01" W a distance of 75.44 feet to a point;

THENCE S 85° 16' 14" W a distance of 183.16 feet to a point;

THENCE N 84° 51' 54" W a distance of 38.31 feet to a point;

THENCE N 64° 40' 46" W a distance of 36.70 feet to a point;

THENCE N 53° 17' 17" W a distance of 223.71 feet to a point;

THENCE N 62° 23' 39" W a distance of 36.08 feet to a point;

THENCE N 82° 22' 04" W a distance of 106.21 feet to a point;

THENCE N 89° 52' 43" W a distance of 45.93 feet to a point;

THENCE S 80° 14' 36" W a distance of 38.59 feet to a point;

THENCE S 64° 04' 13" W a distance of 48.50 feet to a point;

THENCE S 49° 20' 16" W a distance of 48.99 feet to a point;

THENCE S 45° 35' 35" W a distance of 65.52 feet to a point on the west side of Paul Bound; THENCE leaving Carter Road, and along the east line of Dewey King, (309-359) N 00° 02' 47" E a distance of 1727.74 feet to a 5/8" capped rebar set in 2007 on the north line of Fraction Section 13 on the south line of Heidi Marty, (336-2170) (359-523), passing a 5/8" capped rebar set at 33.02;

THENCE along the south line of Heidi Marty and Kevin Doughty (449-1216) S 89° 27' 24" E a distance of 1427.69 feet to a 5/8" capped rebar set in 2007 on the west line of Kevin Doughty (449-1216);

THENCE along the west line of Kevin Doughty S 00° 12' 53" W a distance of 910.47 feet to an iron pin found at the northwest corner of Kyle Thomas, Official Record 440-2576;

THENCE along the west line of Thomas, S 00° 27' 52" W a distance of 955.38, passing a 5/8" capped rebar set in 2007 at 883.02 feet, to the Point of Beginning, containing 57.6378 Acres. Parcel ID J010010011100.

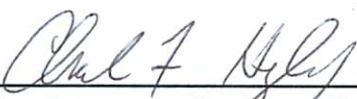
More particularly shown on the attached Plat of Survey, made by Charles F. Hughes, Jr., Professional Surveyor No. 7182, dated January 4, 2021, attached hereto, to be made a part hereof and to be filed herewith.

Subject to all legal highways, right of ways, easements, restrictions and reservations of record.

Bearings are based on an assumed meridian and are used to denote horizontal angles only.


All rebar set are 5/8" x 30" with a plastic cap stamped HUGHES PS OH 7182 WV 872.

This legal description was prepared by Charles F. Hughes, Jr., Professional Surveyor No. 7182, based on field surveys in August, 2007.


Charles F. Hughes, Jr., PS 7182



1-4-2021
Date

Description Checked for
Mathematical Accuracy
Athens County
ENGINEER'S OFFICE
BY: 
DATE: 1/29/21

Legal Description Pre-Approval
APPROVED
All transfers are subject to
Athens County Conveyance Standards

FEB 01 2021

Jill Thompson
Athens County Auditor

PROJECT NO. 21-0101

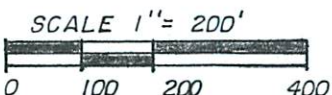
PREPARED FOR

LARRY WILLIAMS

STATE OF OHIO
ATHENS COUNTY
LODI TOWNSHIP
T 4 N R 13 W SEC 14
FRACTION 13

LEGEND

- 5/8" CAPPED REBAR SET
- IRON PIN FOUND

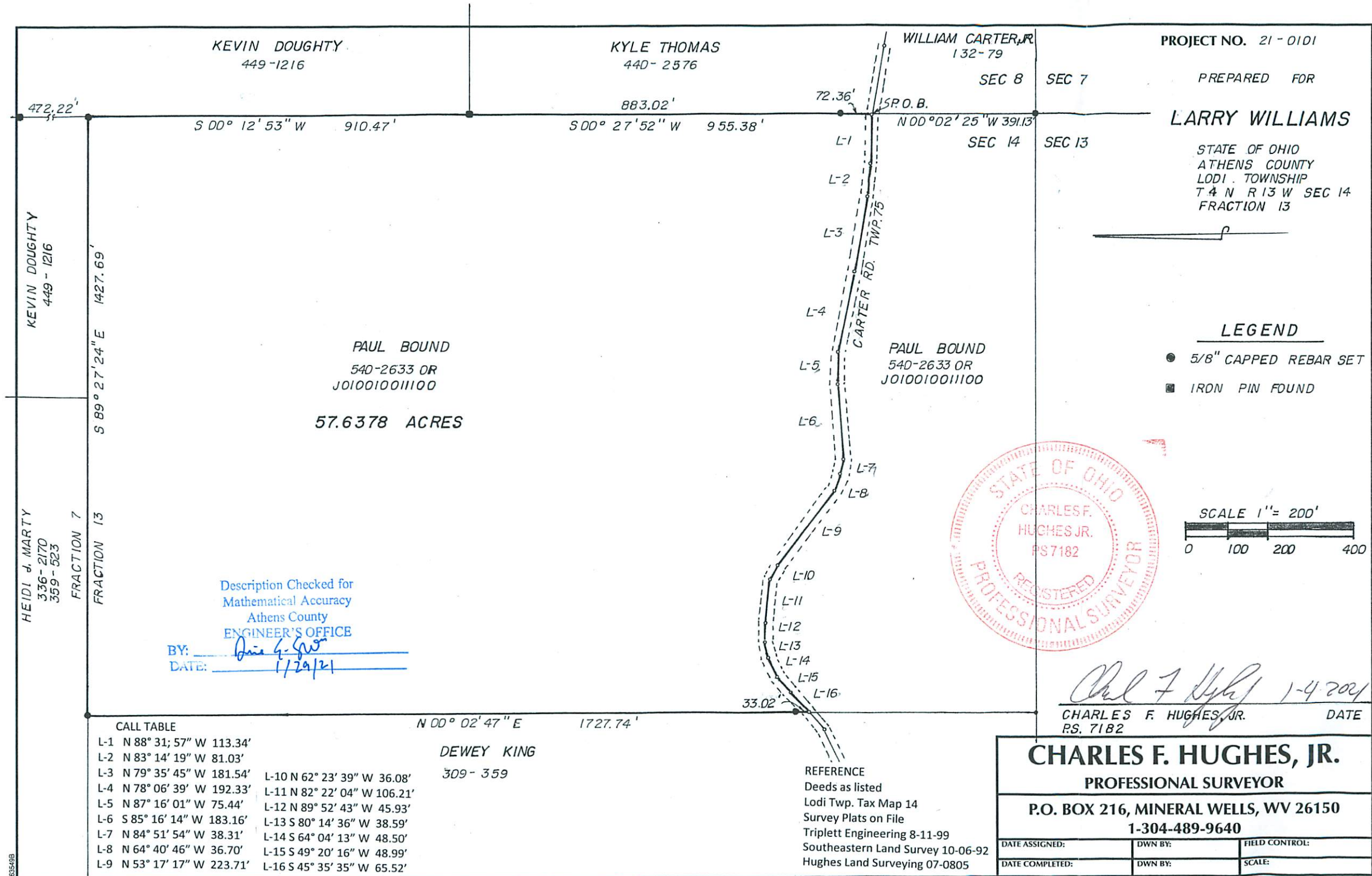


Charles F. Hughes, Jr. 1-4-2021
 CHARLES F. HUGHES, JR. DATE
 P.S. 7182

CHARLES F. HUGHES, JR.
 PROFESSIONAL SURVEYOR

P.O. BOX 216, MINERAL WELLS, WV 26150
 1-304-489-9640

DATE ASSIGNED:	DWN BY:	FIELD CONTROL:
DATE COMPLETED:	DWN BY:	SCALE:



KEVIN DOUGHTY
449-1216

KYLE THOMAS
440-2576

WILLIAM CARTER, JR.
132-79

472.22'
S 00° 12' 53" W 910.47'

883.02'
S 00° 27' 52" W 955.38'

72.36'
S.P.O.B.
N 00° 02' 25" W 391.13'

KEVIN DOUGHTY
449-1216

S 89° 27' 24" E 1427.69'
FRACTION 13

PAUL BOUND
540-2633 OR
JO10010011100

57.6378 ACRES

Description Checked for
Mathematical Accuracy
Athens County
ENGINEER'S OFFICE

BY: *Paul F. Hughes*
DATE: 1/29/21

HEIDI J. MARTY
336-2170
359-523

FRACTION 7

N 00° 02' 47" E 1727.74'

DEWEY KING
309-359

CALL TABLE

L-1 N 88° 31' 57" W 113.34'	L-10 N 62° 23' 39" W 36.08'
L-2 N 83° 14' 19" W 81.03'	L-11 N 82° 22' 04" W 106.21'
L-3 N 79° 35' 45" W 181.54'	L-12 N 89° 52' 43" W 45.93'
L-4 N 78° 06' 39" W 192.33'	L-13 S 80° 14' 36" W 38.59'
L-5 N 87° 16' 01" W 75.44'	L-14 S 64° 04' 13" W 48.50'
L-6 S 85° 16' 14" W 183.16'	L-15 S 49° 20' 16" W 48.99'
L-7 N 84° 51' 54" W 38.31'	L-16 S 45° 35' 35" W 65.52'
L-8 N 64° 40' 46" W 36.70'	
L-9 N 53° 17' 17" W 223.71'	

REFERENCE
 Deeds as listed
 Lodi Twp. Tax Map 14
 Survey Plats on File
 Triplett Engineering 8-11-99
 Southeastern Land Survey 10-06-92
 Hughes Land Surveying 07-0805