

Plat of Survey of 10.000 acres  
 Situated in Section 17, Town 4,  
 Range 13, Lodi Township, Athens  
 County, Ohio  
 Surveyed April, 1999 for  
 James Norman

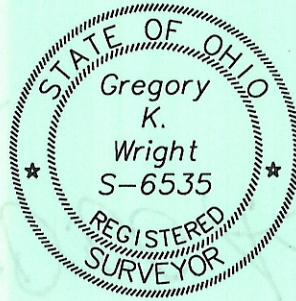
*Gregory K. Wright*  
 Gregory K. Wright



Gregory K. Wright

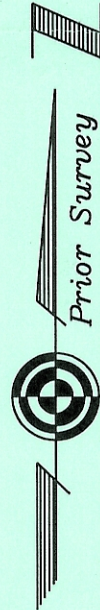
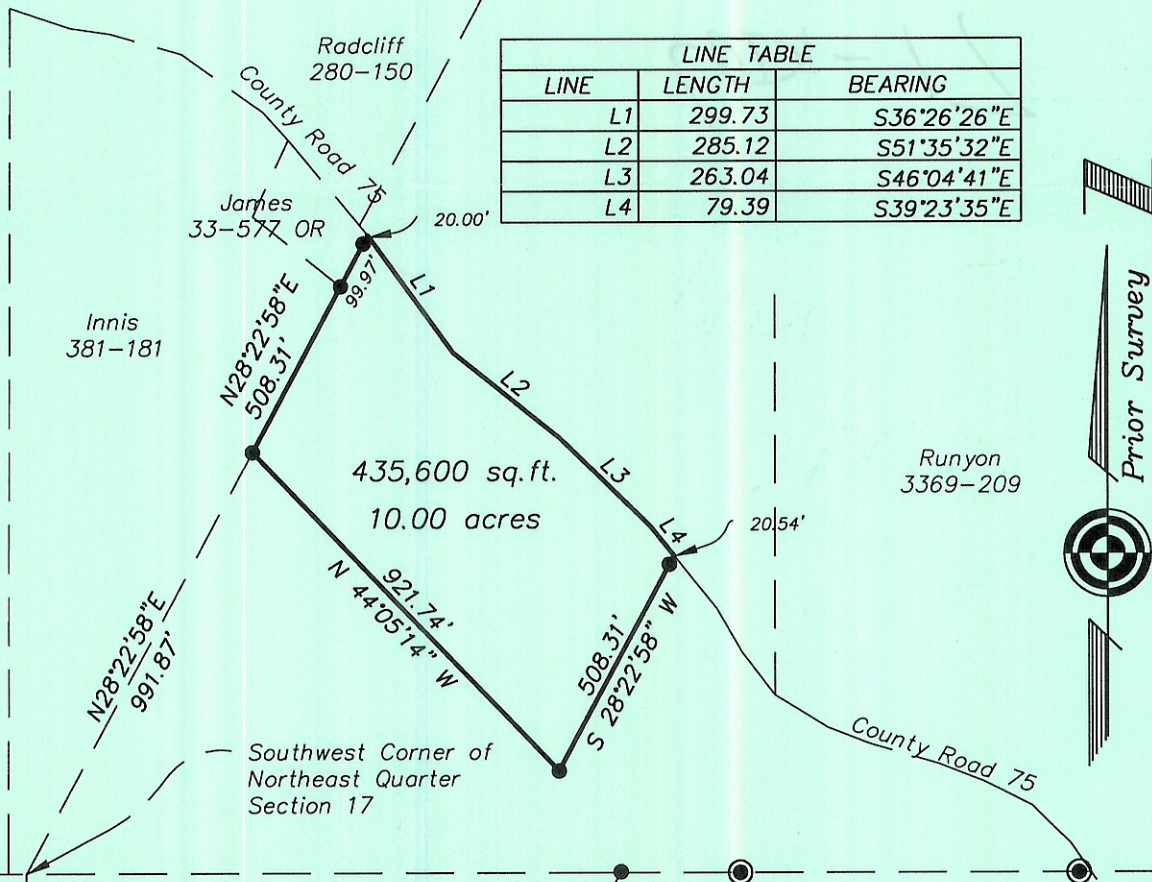
Professional Engineer  
 Professional Surveyor

11684 Channingway Blvd  
 The Plains, Ohio 45780  
 740-797-4142  
 FAX 740-797-8623



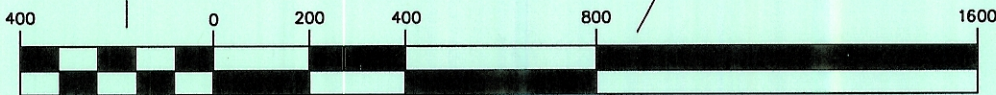
- ⊙ = Iron Pin Found
- = Iron Pin Set

LINE TABLE		
LINE	LENGTH	BEARING
L1	299.73	S36°26'26"E
L2	285.12	S51°35'32"E
L3	263.04	S46°04'41"E
L4	79.39	S39°23'35"E



MacRostie  
 367-549

GRAPHIC SCALE



( IN FEET )  
 1 inch = 400 ft.

Description checked for  
 Mathematical Accuracy  
 ATHENS COUNTY  
 ENGINEER'S OFFICE  
 BY: *S. Blause*  
 DATE: *5-11-99*