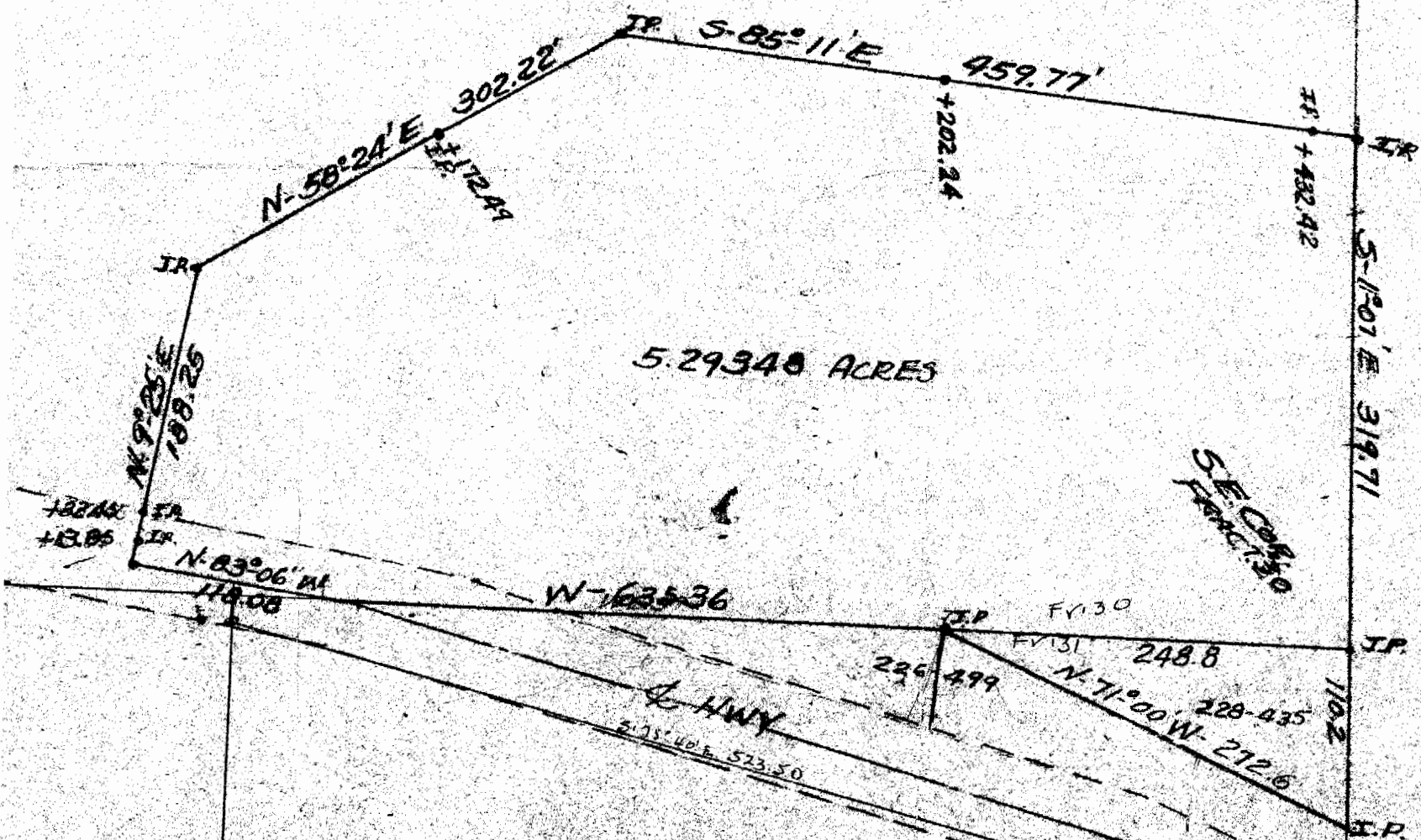


SURVEY OF 5.29348 ACRE TRACT  
 LOCATED IN FRACTION No. 30, T.N. 4, R. 13, SECT. 21  
 LODI TOWNSHIP, ATHENS Co., OHIO.  
 SOLD TO VICTOR STOVER & MYRTLE STOVER  
 BY CLYDE V. SMITH & MABEL O. SMITH  
 SURVEYED BY F.A. DIXON  
 SCALE 1" = 100 FT.



BOOK 8 - PAGE 406

27