

Southeastern Land Surveys

THOMAS C. TRANTINA P.L.S. #8320

P.O. BOX 121, CHAUNCEY, OH. 45719 (740-797-4499)

Instrument Book Page
200900001122 DR 432 2130

Situated in Fraction 33, Section 27, Lodi Township, Town 4, Range 13, Athens County, Ohio and described as follows:

Commencing at a fence post corner at the estimated approximate northeast corner of the southeast quarter of Section 33 of Lodi Township, with said corner taken to be the northeast corner of the Second Tract described in Volume 299 Page 1050 (Robert Dean And Kim Alan Kyle) on the west line of the John S. and Ellen V. Blazier Living Trust (269-910 O.R.); thence on an assumed bearing along the east line of Kyle (299-1050 O.R.) and the west line of the Blazier Living Trust (269-910 O.R.)

South 00°04'10" West a distance of 1081.79 feet

to a set iron pin at the approximate northwest corner of a 63 acre, by deed, tract described in said Blazier Living Trust Deed Volume 269 Page 910 O.R. and said set iron pin is THE TRUE POINT OF BEGINNING; thence along the approximate north line of said 63 acre tract (Blazier Living Trust 269-910 O.R.)

North 89°17'15" East a distance of 1401.13 feet

to a five eighth inch iron pin* with cap inscribed "TOM TRANTINA RLS-8320" at the southwest corner of Jennifer Smathers (416-2415 O.R.); thence continuing along the approximate north line of said 63 acre tract (Blazier Living Trust 269-910 O.R.) and along the south line of Jennifer Smathers (416-2415 O.R.)

North 89°15'27" East a distance of 299.87 feet

to a point in Athens County Road 102 at the approximate northeast corner of aforesaid 63 acre tract (Blazier Living Trust 269-910 O.R.) at the southeast corner of Jennifer Smathers (416-2415 O.R.) (passing through a five eighth inch rebar* with cap inscribed "TOM TRANTINA RLS-8320" at 281.15 feet); thence along said road and the east line of said 63 acre tract (Blazier Living Trust 269-910 O.R.) the following four bearings and distances:

South 03°00'02" East a distance of 322.66 feet to a point ; thence

South 06°20'57" East a distance of 168.73 feet to a point ; thence

South 09°22'41" East a distance of 101.39 feet to a point ; thence

South 06°15'18" East a distance of 155.79 feet

to a point at the northeast corner of Roger Umstott (425-1555 O.R.); thence leaving said road and along the north line of Umstott 425-1555 O.R.) and east line of the remainder of aforesaid 63 acre tract (Blazier Living Trust 269-910 O.R.)

South 55°59'20" West a distance of 911.70 feet

to a found five eighth inch rebar with cap inscribed: "SEYMOUR" at the northwest corner of Umstott (425-1555 O.R.) ,passing through a found five eighth inch rebar with cap (label obscured) at 29.95 feet; thence along the west line of Umstott (425-1555 O.R.) and said east line of the remainder of aforesaid 63 acre tract (Blazier Living Trust 269-910 O.R.)

South 29°35'44" East a distance of 408.68 feet

to a point at the southwest corner of Umstott (425-1555 O.R.) at the southeast corner of the remainder of aforesaid 63 acre tract (Blazier Living Trust 269-910



Southeastern Land Surveys

THOMAS C. TRANTINA P.L.S. #8320

P.O. BOX 121, CHAUNCEY, OH. 45719 (740-797-4499)

Instrument Book Page
200900001122 DR 432 2131

O.R.) on the north line of Gregory Lee Meeks etal (405-1752 O.R.) said point witnessed by a found five eighth inch rebar with cap inscribed: "SEYMOUR" which bears: South 29°35'44" East a distance of 5.19 feet; thence along the south line of aforesaid 63 acre tract (Blazier Living Trust 269-910 O.R.) and north line of Meeks etal (405-1752 O.R.)

South 89°17'10" West a distance of 1218.06 feet

to found fence post corner at the southwest corner of the 63 acre tract (Blazier Living Trust 269-910 O.R.) and the northwest corner of Meeks etal (405-1752 O.R.) at the southeast corner of Robert Dean and Kim Alan Kyle (299-1050 O.R.); thence along the west line of said 63 acre tract (Blazier Living Trust 269-910 O.R.) and the east line of Kyle (299-1050 O.R.)

North 00°04'10" East a distance of 1604.02 feet

to the point of beginning and containing 54.785 acres and being all of the remainder of a 63 acre (by deed) tract described in Volume 269 Page 910 of the Athens County Official Deed Records.

*Note: Denotes calculated monument based on a previous survey.

Note 1) Unless otherwise noted, all set iron pins are 5/8 inch diameter rebar 30 inches in length and capped with a yellow plastic identification marker inscribed: "TOM TRANTINA RLS-8320"

Note 2) All calls for adjoiners cited above and deeds shown in parenthesis are given to fulfill County Auditor and County Engineer's requirements and do not necessarily imply an acceptance of the content of said deeds nor the seniority of the same.

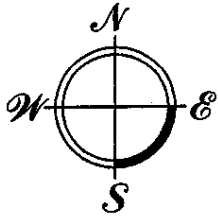
The above description was prepared under the supervision of Thomas Trantina, Registered Professional Land Surveyor No. 8320 and based on a survey performed by Southeastern Land Surveys dated January 20, 2009.

Subject to all deeds and right of ways, reservations, restrictive and protective covenants, utility easements and oil, gas and mineral leases of record in the chain of title in Athens County.

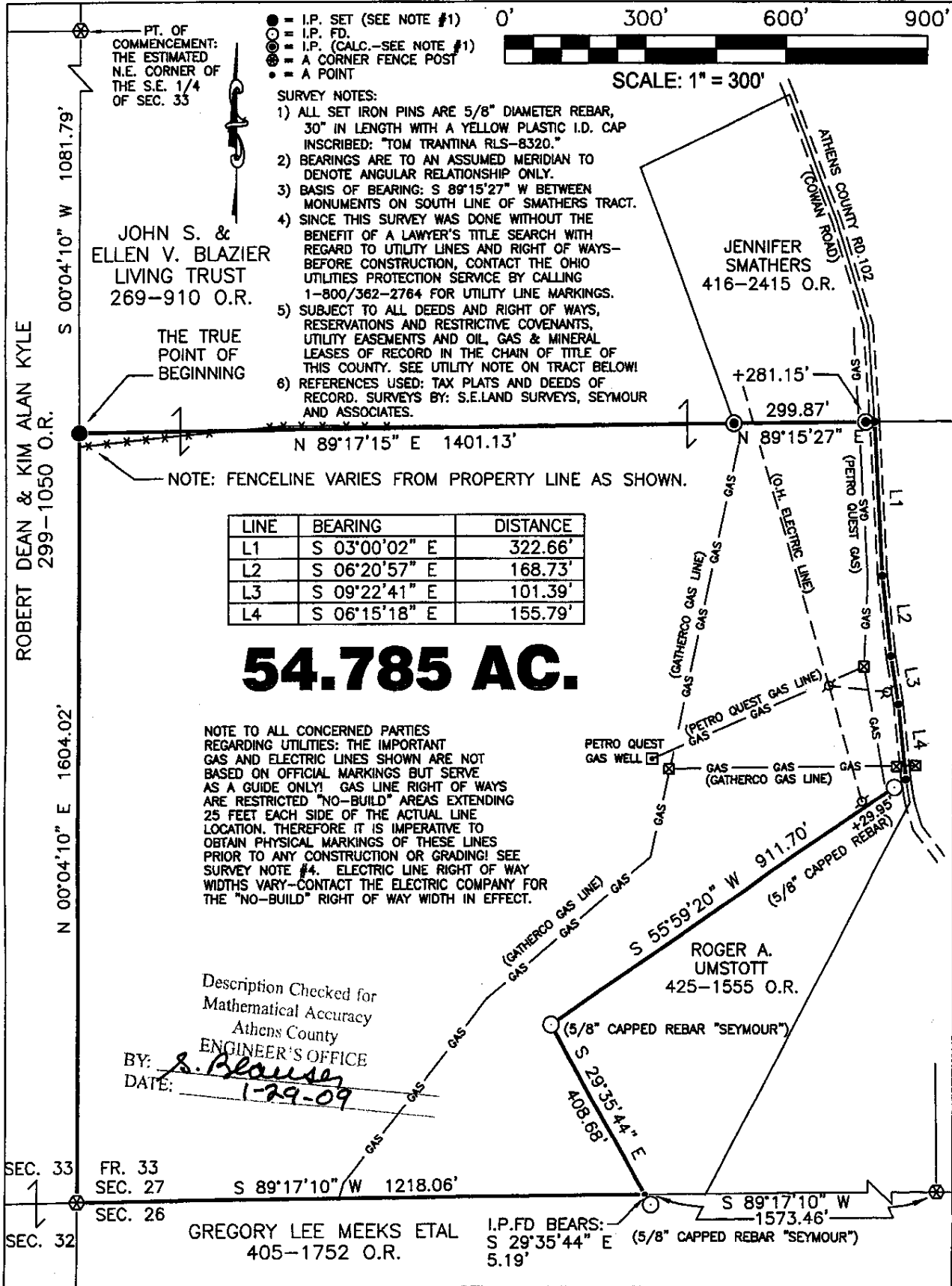
Description Checked for
Mathematical Accuracy
Athens County
ENGINEER'S OFFICE
BY: S. Blause
DATE: 1-29-09

THOMAS C. TRANTINA
REGISTERED PROFESSIONAL LAND SURVEYOR

S.C.C.A. BLDG. 2380 OLD RT. 33
SHADE, OHIO 45766 740/696-1230



Southeastern Land Surveys



NOTE: THIS PLAT IS NOT VALID WITHOUT MY SIGNATURE AND EMBOSSED SEAL OR IF IT CONTAINS ADDITIONS MADE BY OTHERS.

Plat of SURVEY OF A 54.785 ACRE TRACT

Scale: 1" = 300'

Surveyed for: MRS. EMOGENE E. YEAGER-COEN Date: 01/20/09

Subdivision FRACTION 33

Township LODI Section 27 Town 4 Range 13

Corporation County ATHENS Ohio

Thomas C. Trantina Job No. 01010109

Thomas C. Trantina P.L.S. No. 8320