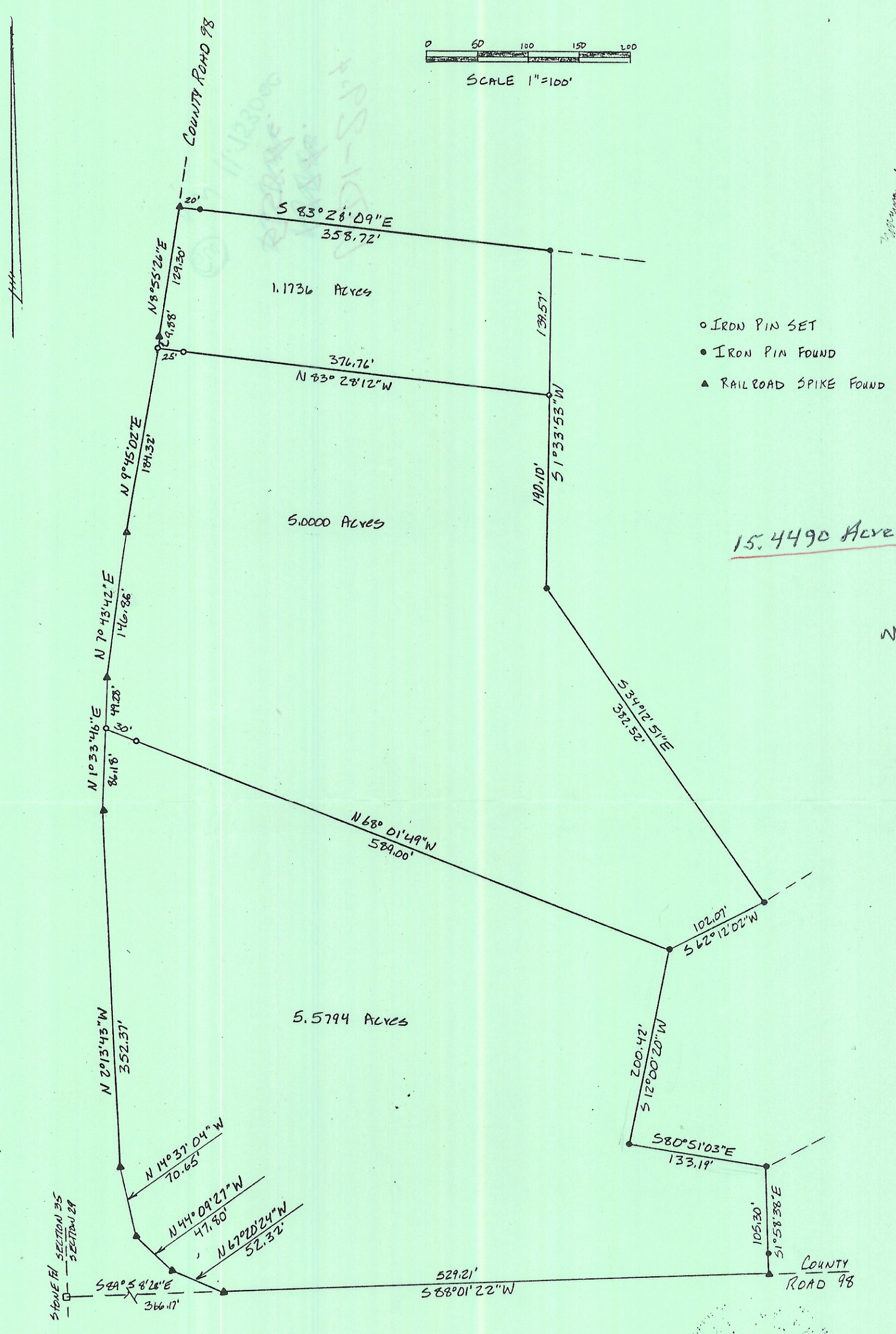
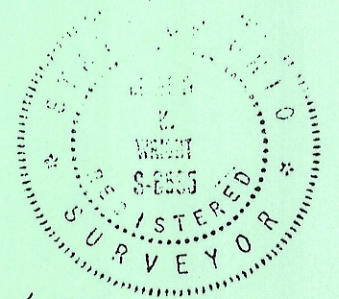


SCALE 1"=100'



PLAT OF SURVEY OF 11.7530 ACRES IN 3 TRACTS  
 SITUATED IN SECTION 29, TOWN 4, RANGE 13, LODI  
 TOWNSHIP, ATHENS COUNTY, OHIO  
 SURVEYED APRIL 1988 FOR  
 MARK SULLIVAN



*Mark Sullivan*  
 REGISTERED SURVEYOR 6-6535