

PLAT of Survey for Barry D. Bobo

Situate in the State of Ohio,
Counties of Athens and Meigs,
Ohio Company Purchase Range
13, Townships 3 and 4 also
known as Lodi and Bedford,
Sections 31 and 36.

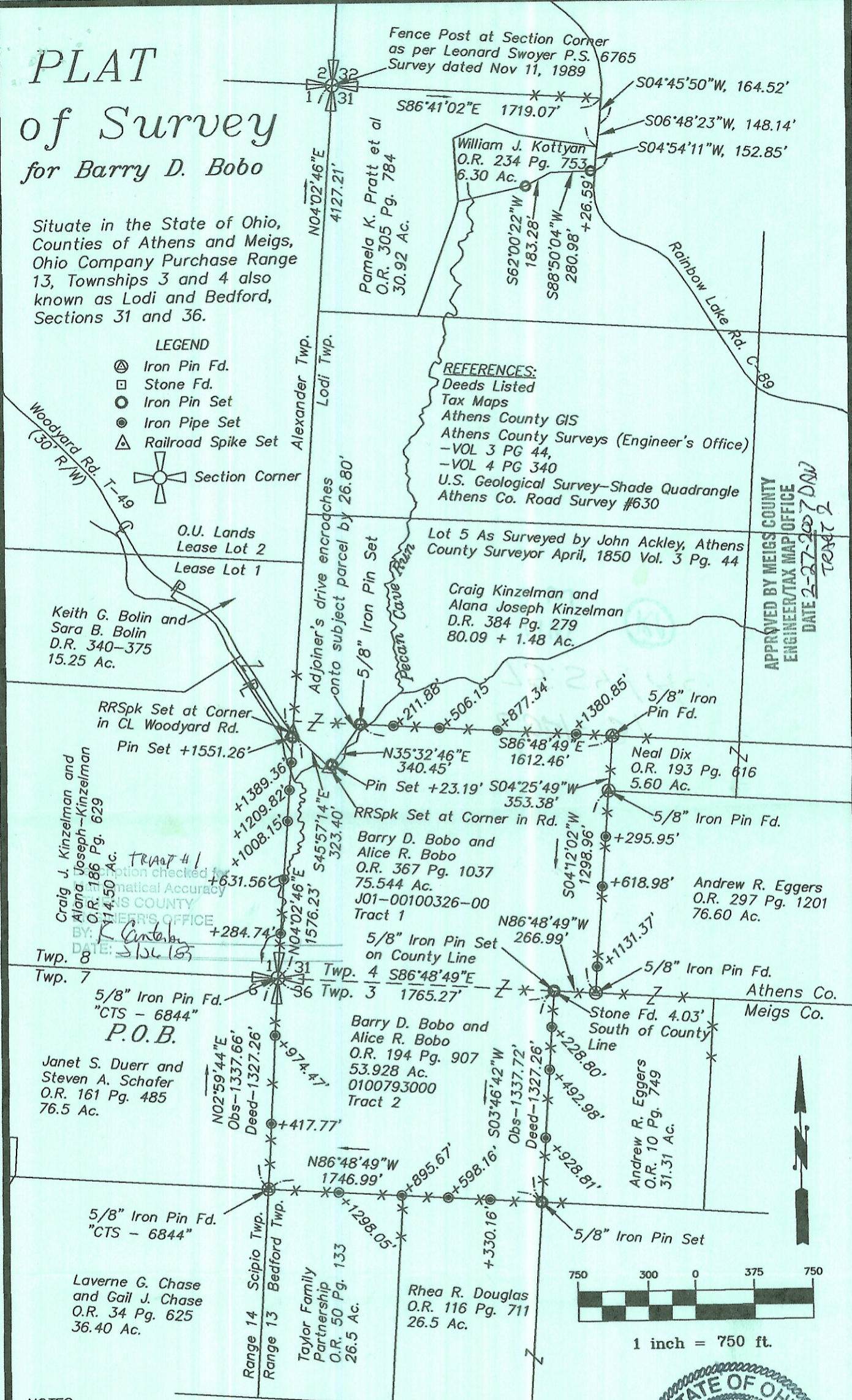
LEGEND

- ⊙ Iron Pin Fd.
- Stone Fd.
- Iron Pin Set
- Iron Pipe Set
- △ Railroad Spike Set
- ⊕ Section Corner

REFERENCES:

- Deeds Listed
- Tax Maps
- Athens County GIS
- Athens County Surveys (Engineer's Office)
 - VOL 3 PG 44,
 - VOL 4 PG 340
- U.S. Geological Survey-Shade Quadrangle
- Athens Co. Road Survey #630

APPROVED BY MEIGS COUNTY
ENGINEER/TAX MAP OFFICE
DATE 2-27-2007 DWJ
TEXT 2



NOTES:

- Iron Pins Set are 5/8" X 30" rebar with plastic caps stamped "PRICE PS 8362"
- Iron Pipes Set on Line are 3/8" X 18" with plastic caps stamped "PRICE PS 8362"
- Basis of Bearings is NAD 83 (CORS)
SPCS Ohio South Zone, Grid Values.

I hereby certify that this Plat and
Notes are correct as surveyed by me
February, 2007.

Robert A. Price, P.S. 8362

