

Branner Surveying

12500 N. Peach Ridge
Athens, Ohio

Situated in Section 32, T.4, R.13, Lodi Township, Athens County, Ohio and being more particularly described as follows:

Commencing at a stone in the southeast corner of Section 32 of Lodi Township, thence, South 3 degrees 37 minutes 16 seconds West, a distance of 442.78 feet to an iron pin found, the *point of beginning*,

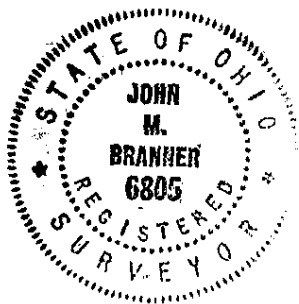
Thence, North 52 degrees 22 minutes 17 seconds West, a distance of 342.54 feet to an iron pin found,
Thence, North 18 degrees 36 minutes 37 seconds West, a distance of 270.55 feet to an iron pin found,
Thence, North 69 degrees 2 minutes 42 seconds East, a distance of 122.79 feet to an iron pin found,
Thence, North 24 degrees 3 minutes 18 seconds West, a distance of 131.92 feet to an iron pin found,
Thence, South 65 degrees 43 minutes 56 seconds West, a distance of 204.15 feet to an iron pin found,
Thence, North 20 degrees 51 minutes 30 seconds East, a distance of 956.58 feet to an iron pin set,
Thence, North 25 degrees 14 minutes 33 seconds East, a distance of 200.00 feet to a point in Township Road 68, passing an iron pin set at 151.43 feet,
Thence, along said road, South 64 degrees 45 minutes 27 seconds East, a distance of 171.26 feet to a Point in the east line of section 32;

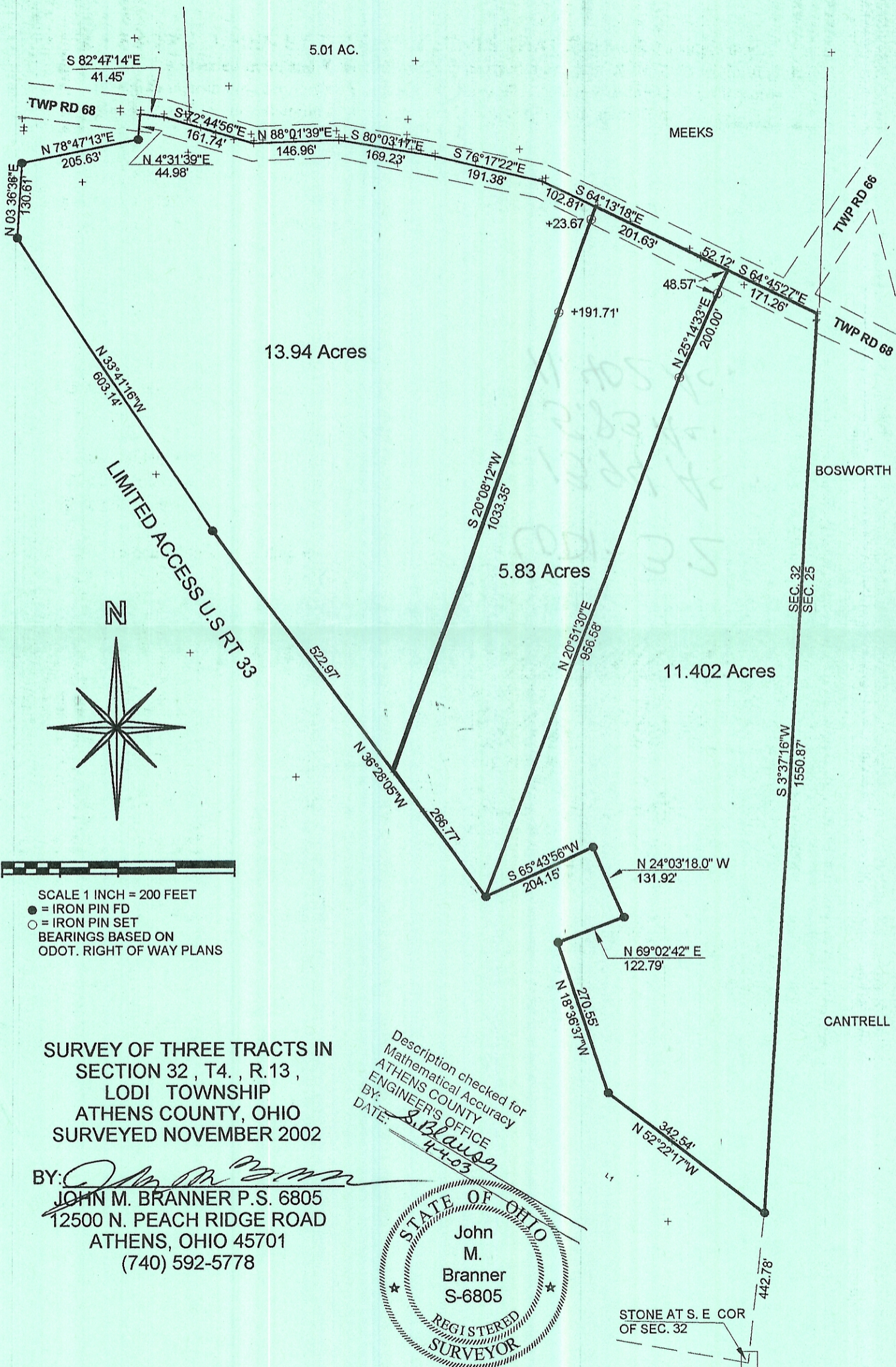
Thence, leaving said road, and along said section line, South 3 degrees 37 minutes 16 seconds West, a distance of 1550.87 feet to the point of beginning and containing 11.402 acres.

Subject to all easements and rights of way.

Based on a field survey completed March 2003 by John M. Branner, P.S. 6508.

Description checked for
Mathematical Accuracy
ATHENS COUNTY
ENGINEER'S OFFICE
BY: S. Blausen
DATE: 4-4-03





SURVEY OF THREE TRACTS IN
SECTION 32, T4., R.13,
LODI TOWNSHIP
ATHENS COUNTY, OHIO
SURVEYED NOVEMBER 2002

BY: *John M. Branner*
JOHN M. BRANNER P.S. 6805
12500 N. PEACH RIDGE ROAD
ATHENS, OHIO 45701
(740) 592-5778

Description checked for
Mathematical Accuracy
ATHENS COUNTY
ENGINEER'S OFFICE
BY: *S. Blaus*
DATE: *4-4-03*



STONE AT S. E. COR
OF SEC. 32