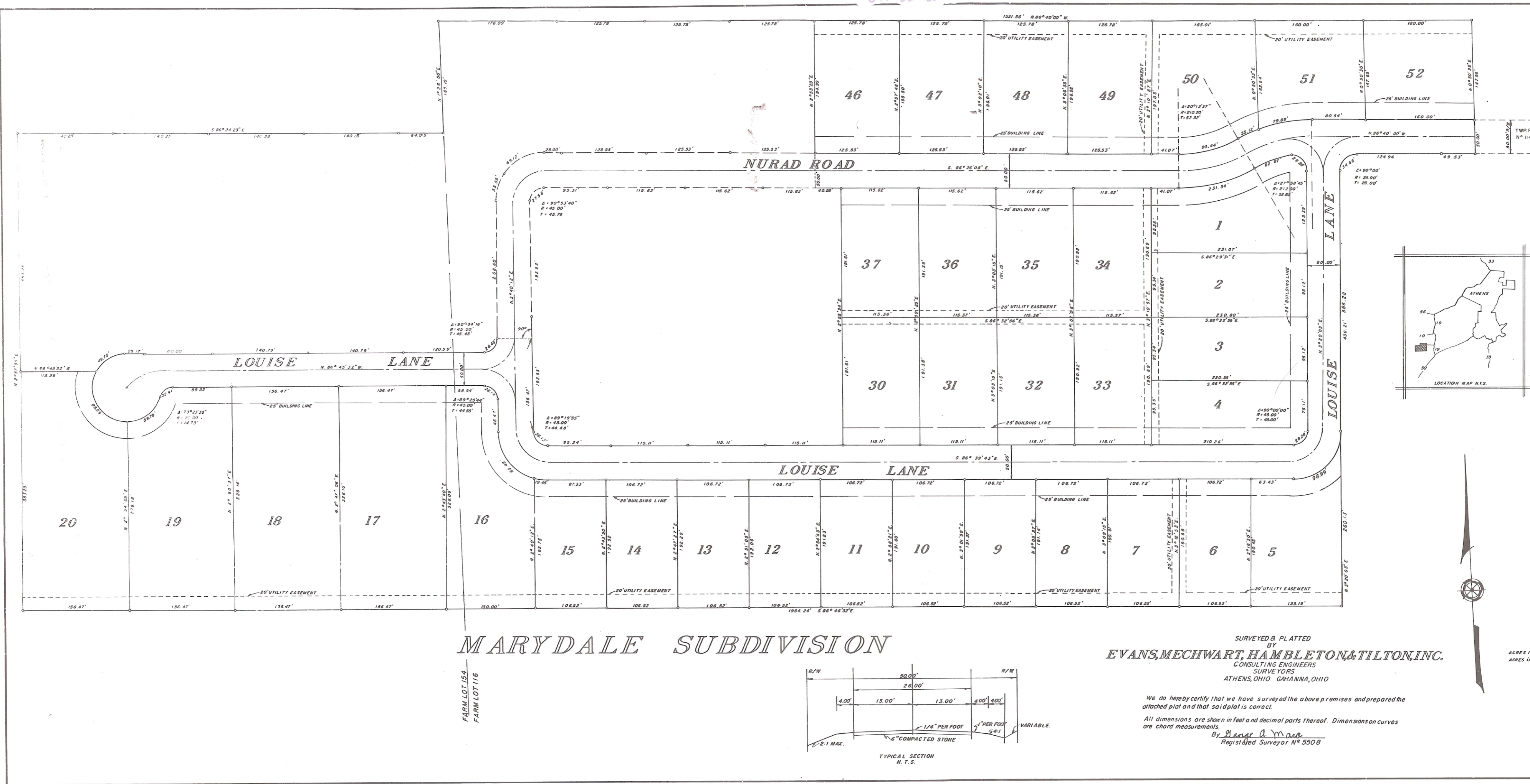


ENVELOPE: 412B

MARYDALE SUBDIVISION &
RESTRICTIONS -
SECTION 25
ATHENS TWP

In the town of



Situated in the Township of Athens, County of Athens, State of Ohio, and being a part of Farm Lot 104-1030-816, Section 25, Township 9, Range 14, containing 24.24 acres and being part of a tract conveyed to Marydale, Inc. and described in Deed Book 266, Page 458, Recorder's Office, Athens County, Ohio.

The undersigned Marydale, Inc. an Ohio Corporation owners of the land plotted herein, by Jack Russell, President and Mary Russell, Secretary, duly authorized in the premises, do hereby certify that this plat correctly represents the Marydale Subdivision of lots 10-20, 30-37, 40-42, 50-52, and does hereby accept in full of some and dedicates to public use as such all parts of the streets shown hereon and not heretofore dedicated.

Easements are reserved where indicated on the plat for construction, operation and maintenance of public utilities above and beneath the surface of the ground and where necessary are for the construction, operation and maintenance of service connections to adjacent lots and lands.

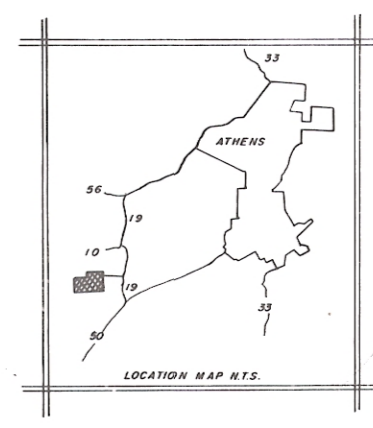
In witness whereof, Jack Russell and Mary Russell as President and Secretary respectively of Marydale, Inc. an Ohio Corporation, have hereunto set their hands, this 31st day of March, 1969.

WITNESS
By Colonel A. Rice MARYDALE INCORPORATED
By Mary Russell Jack Russell, President
Mary Russell, Secretary

STATE OF OHIO
ATHENS COUNTY

Before me, a Notary Public in and for said County personally came Jack Russell and Mary Russell as President and Secretary, respectively of Marydale Incorporated an Ohio Corporation, who acknowledged to signing of the foregoing instrument to be their voluntary act and deed and the voluntary corporate act and deed of said corporation for the uses and purposes herein expressed.

IN WITNESS WHEREOF, I have hereunto set my hand and affixed my official seal this 31st day of March, 1969.



Approved this 29th day of Sept. 1969 Douglas B. Robinson
City Services Director

Approved this 7th day of April 1969 Earl W. Hamilton
City Planning Commission

Approved this 2nd day of Oct. 1969 James S. Hanson
County Engineer

Approved this 9th day of Oct. 1969 John W. White
County Commissioners

Transferred this 23rd day of October, 1969 J. W. Whiteley
Auditor Athens County, Ohio

Filed for record this 23rd day of October, 1969 at 9:00 A.M.

Recorded this 28th day of Oct. 1969, in Plat Book 9, Page 36

File No. 266 Leta M. Wright
Recorder, Athens County, Ohio

MARYDALE SUBDIVISION

SURVEYED & PLATTED
BY
EVANS, MECHWART, HAMBLETON, & TILTON, INC.
CONSULTING ENGINEERS
SURVEYORS
ATHENS, OHIO - GAHANNA, OHIO

We do hereby certify that we have surveyed the above premises and prepared the attached plat and that said plat is correct.

All dimensions are shown in feet and decimal parts thereof. Dimensions on curves are chord measurements.

By Blaise A. Moore
Registered Surveyor No. 5508

Note: Dead restrictions for MARYDALE SUBDIVISION shall be as shown in plat book 9 page 36 Athens County Recorder's Office.

ACRES IN FARM LOT 104-10300	PHASE 1
ACRES IN FARM LOT 104-10300	ACRES IN LOTS 2-0.900
	ACRES IN R/W 2.288
	TOTAL 2-4.288

DATE MARCH 1969

