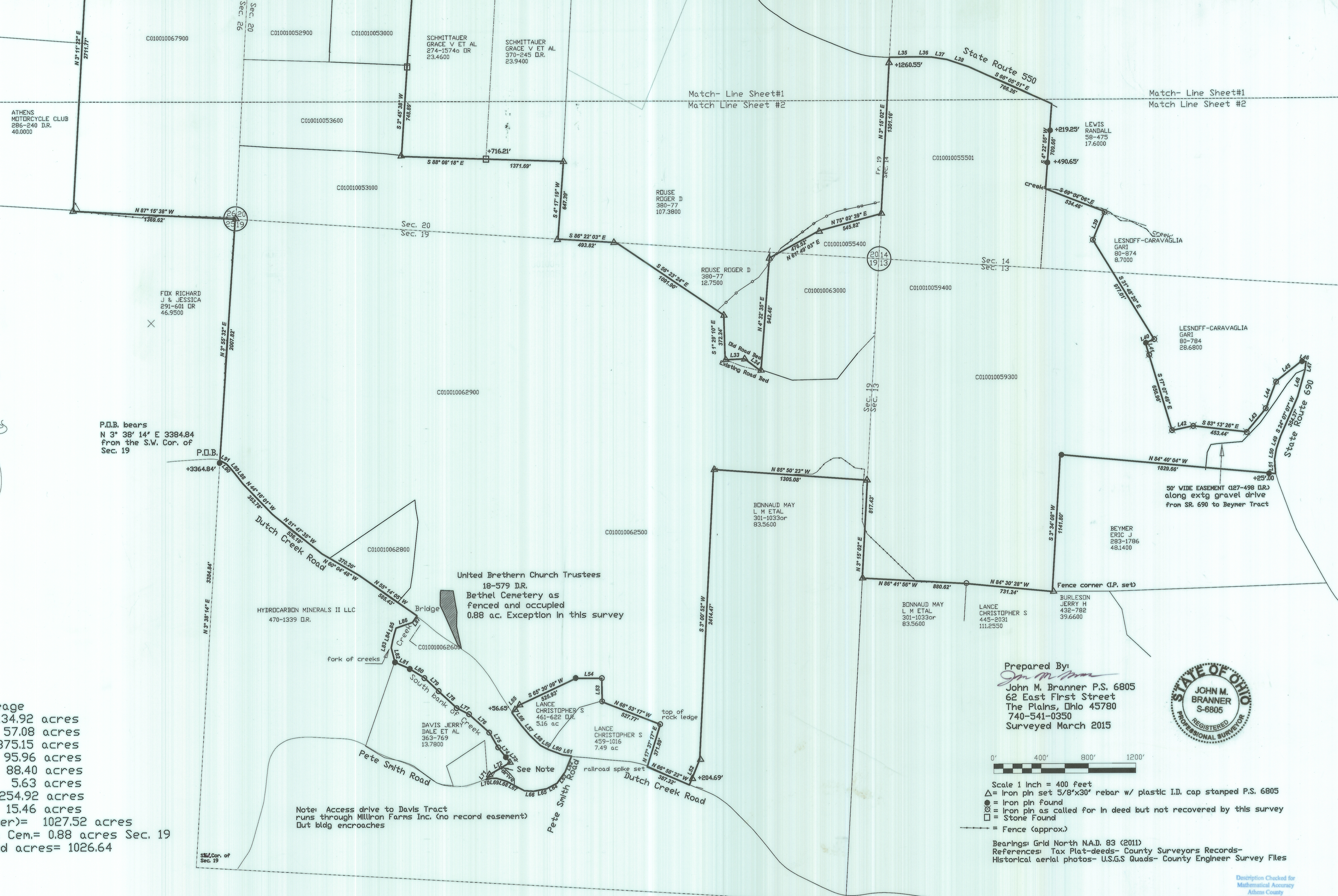


Match- Line Sheet#1
Match Line Sheet #2

Match- Line Sheet#1
Match Line Sheet #2

Match- Line Sheet#1
Match Line Sheet #2



P.O.B. bears
N 3° 38' 14" E 3384.84
from the S.W. Cor. of
Sec. 19

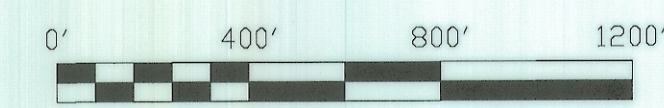
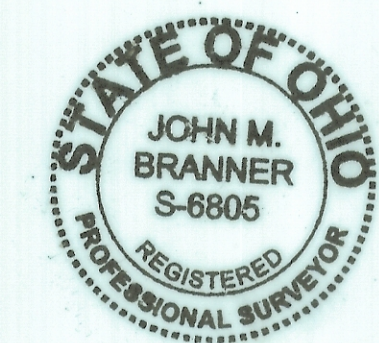
United Brethren Church Trustees
18-579 D.R.
Bethel Cemetery as
fenced and occupied
0.88 ac. Exception in this survey

50' WIDE EASEMENT (127-498 D.R.)
along extg gravel drive
from SR. 690 to Beymer Tract

Sectional Acreage
 Section 13= 134.92 acres
 Section 14 = 57.08 acres
 Section 19 = 375.15 acres
 Fraction 19 = 95.96 acres
 Fraction 25= 88.40 acres
 Section 31= 5.63 acres
 Section 26= 254.92 acres
 Section 27 = 15.46 acres
 Total (perimeter)= 1027.52 acres
 Except Bethel Cem.= 0.88 acres Sec. 19
 Total Surveyed acres= 1026.64

Note: Access drive to Davis Tract
runs through Milliron Farms Inc. (no record easement)
Dut bldg encroaches

Prepared By
John M. Branner
 John M. Branner P.S. 6805
 62 East First Street
 The Plains, Ohio 45780
 740-541-0350
 Surveyed March 2015



Scale 1 Inch = 400 feet
 Δ = Iron pin set 5/8"x30' rebar w/ plastic I.D. cap stamped P.S. 6805
 ● = Iron pin found
 ⊗ = Iron pin as called for in deed but not recovered by this survey
 □ = Stone Found
 --- = Fence (approx.)

Bearings: Grid North N.A.D. 83 (2011)
 References: Tax Plat-deeds- County Surveyors Records-
 Historical aerial photos- U.S.GS Quads- County Engineer Survey Files

Description Checked for
 Mathematical Accuracy
 Athens County
 ENGINEER'S OFFICE
 BY: *Beau H. Hays*
 DATE: *4/15/15*

572 B +
 573 A

201500001668
 Filed for Record in
 ATHENS COUNTY, OHIO
 JESSICA MARKINS, RECORDER
 04-23-2015 At 11:48 am.
 PLAT 86.40