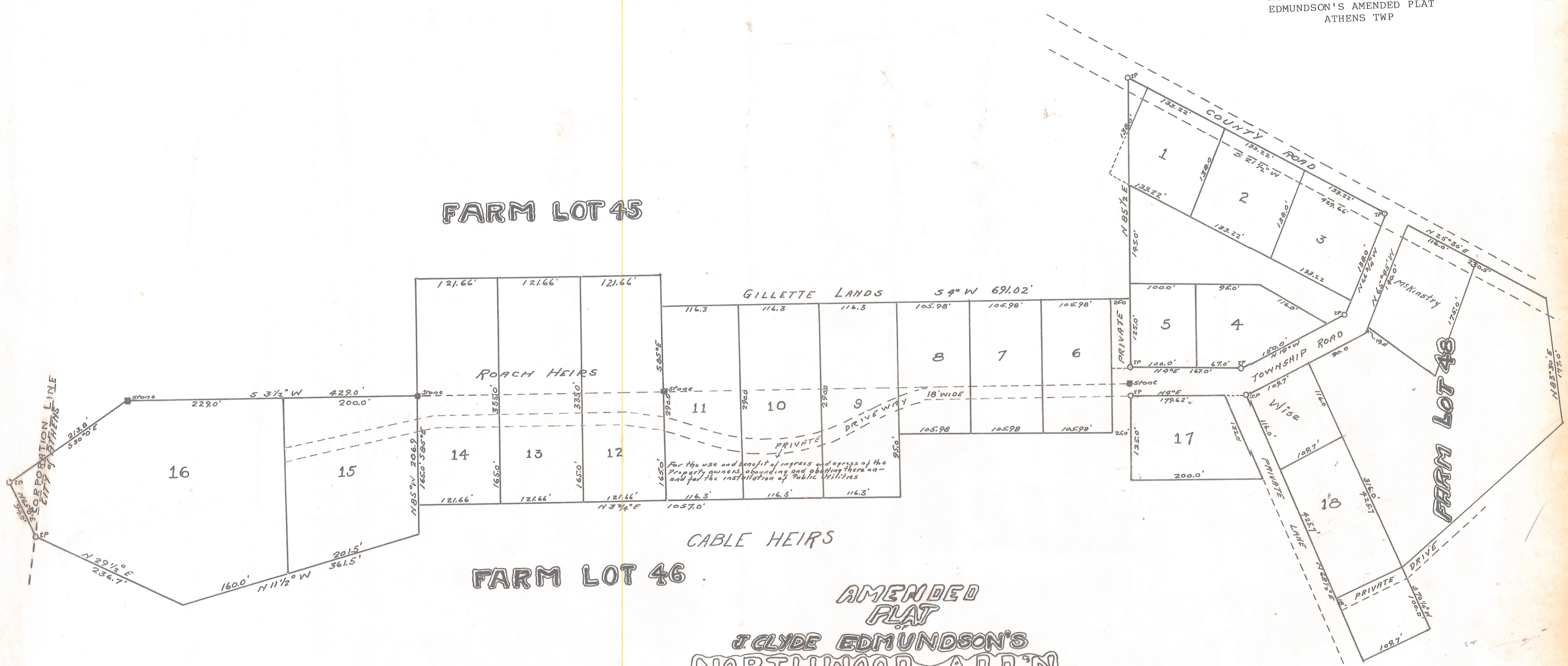


ENVELOPE: 293A  
NORTHWOOD ADDITION - J. CLYDE  
EDMUNDSON'S AMENDED PLAT  
ATHENS TWP

FARM LOT 45



AMENDED  
PLAT  
J. CLYDE EDMUNDSON'S  
NORTHWOOD ADD'N

Being Sub-Div. of Part of Farm Lots 45-46-48  
Situated in Athens Twp-Athens Co.  
Ohio  
Town 9 Range 14 Ohio River Survey  
SCALE 1"=100 FT.

RECORDER'S RECORD  
Recorded in the Record of Plats this 17th day  
of Sept. 1941 - Time 8:00 AM.  
FEE \$6.40  
Clair W. C. Shappell  
Recorder of Athens Co.

Acceptance and Approval  
We, County Commissioners of ATHENS Co.,  
do hereby approve and accept this  
"NORTHWOOD"  
as shown by above plat, this 21st day of Oct. 1940  
Charles Stratton  
H. B. Special Holder  
Milton H. Hargrave  
COMMISSIONERS OF ATHENS COUNTY, OHIO

NOTE -  
The above Plat is a true and accurate  
Copy of the Amended Plat of "NORTHWOOD  
ADDITION" as submitted by J. Clyde  
Edmundson and annexed under Ordin-  
ance No. 844, ATHENS CITY COUNCIL, Jan-  
6, 1941, original Plat Vol 6 - Pg 176 - Deed Records  
J. R. Baird  
1941, 514.