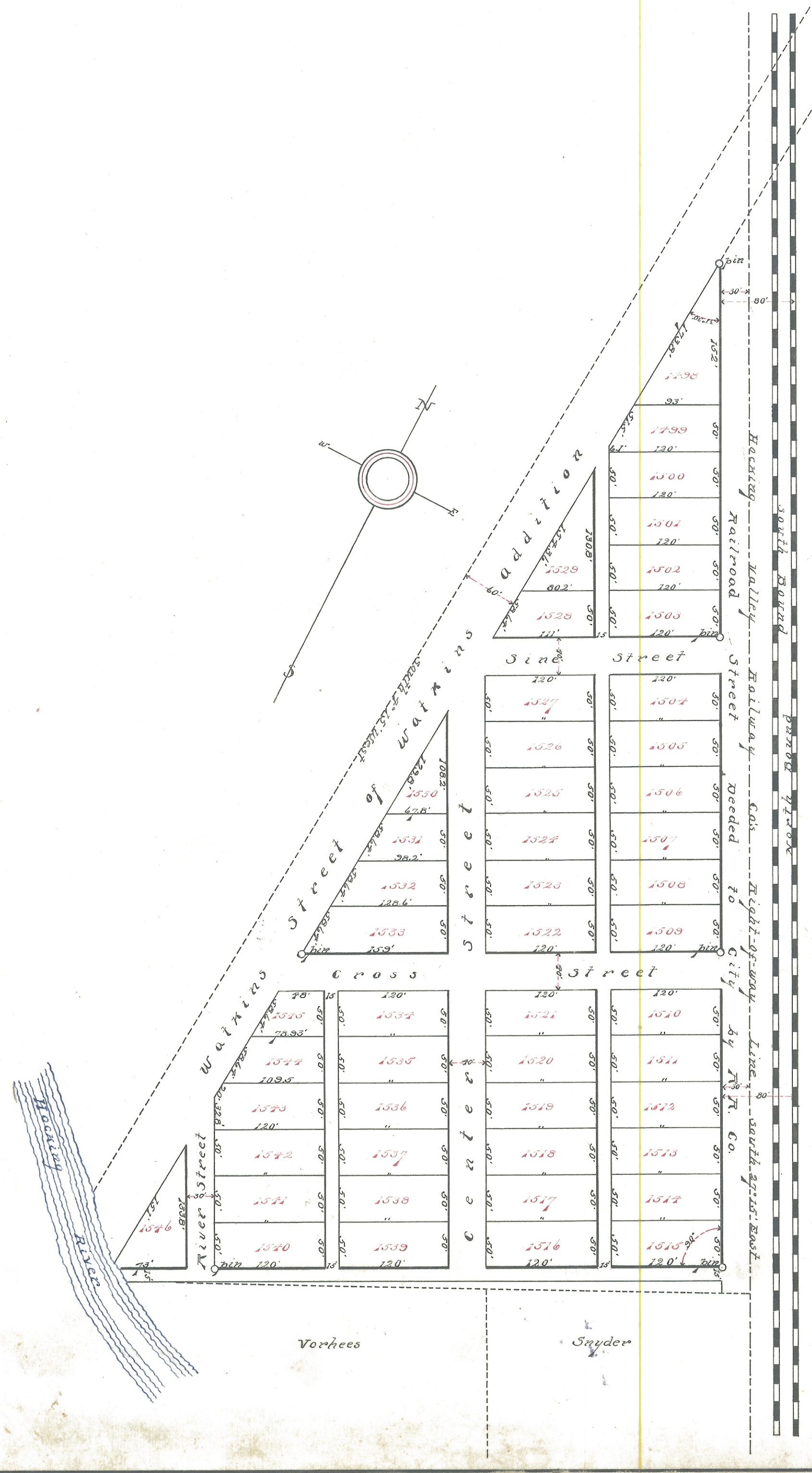


# PLAT OF PATTONS SECOND ADDITION TO NELSONVILLE OHIO

Scale 1 inch = 200 feet.  
O Pins.

ENVELOPE: 203B

PATTON'S 2nd ADDITION  
NELSONVILLE



Description of Patton's Second Addition to the city of Nelsonville Ohio, being a subdivision of a 2.41 acre tract situate in the northwest part of "Bannery Lot" in Watkins Addition to the city of Nelsonville O. Bounded on the west by Watkins Street of said Watkins Addition, on the east by a line parallel to and 80 feet from the center of the St. V. Ry. his north bound track, on the south by a line at right angles to the last mentioned line at a point 1097 feet from its intersection with the east line of Watkins Street, on the south by the Hocking River.

I hereby certify this to be a correct description and plat of said addition to Nelsonville as surveyed by me.

Emmett Keenan  
Surveyor

I Frank Patton, owner of Patton's 2nd Addition to the city of Nelsonville Ohio, which I have caused to be surveyed and platted, do hereby set apart the streets and alleys shown thereon to the public use as such forever.

In Testimony Whereof I have hereunto set my hand this 20th day of November 1906.

Frank Patton

State of Ohio, Athens County ss

Be it remembered that on this 20th day of November 1906 before me the undersigned a Notary Public in and for Athens County Ohio personally came Frank Patton the grantor in the foregoing plat and acknowledged the making and signing of the same to be his free and voluntary act for the uses and purposes herein mentioned.

Emmett Keenan  
Notary Public

I, John Cox Clerk of the Council of the city of Nelsonville Ohio hereby certify that the plat of Patton's 2nd Addition to the city of Nelsonville O. was duly approved by ordinance of Council passed Nov. 5th 1906.

John Cox

Received for record Dec. 11th 1906 8:45 a.m. Clerk of Council  
Recorded Dec. 26th 1906 Elmer Golden Rec.